

A red Bourgault X30 Apollo irrigation system is shown in a field of tall, golden-brown grass. The system features multiple large black wheels, yellow hydraulic arms, and numerous white corrugated hoses that curve upwards from the main body. The background shows a clear blue sky and a distant line of trees.

**BOURGAULT**

**X30** Apollo | System

INGENUITY.

SIMPLICITY.

DURABILITY.

 **TOPCON**  
Precision Agriculture

[www.bourgault.com](http://www.bourgault.com)



# X30 Apollo System Detecting ECU's





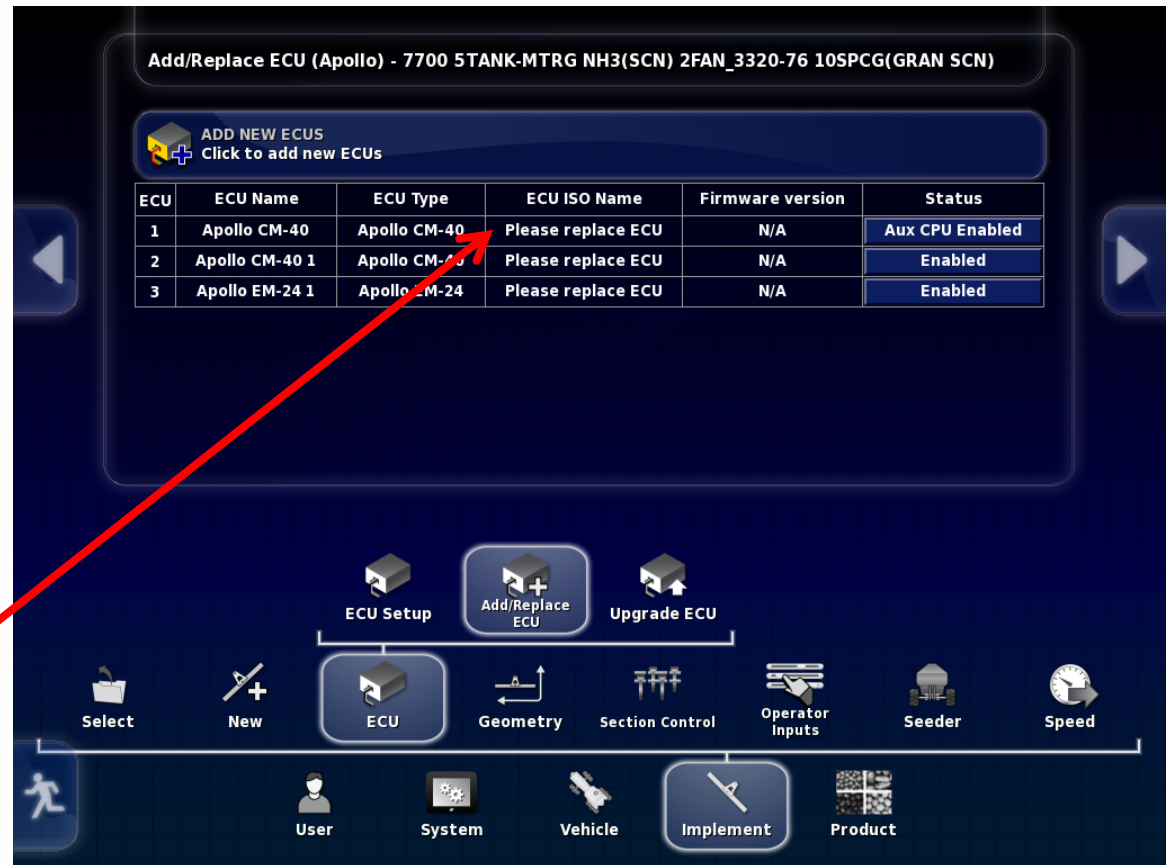


## Procedure for detecting Master ECU

For the X30 Apollo system each ECU must be “Detected” before the X30 will recognize it.

This means that each tank will have to have the following procedure done for X30 to run the tank.

If there is no ECU ISO Name a Detect must be performed.



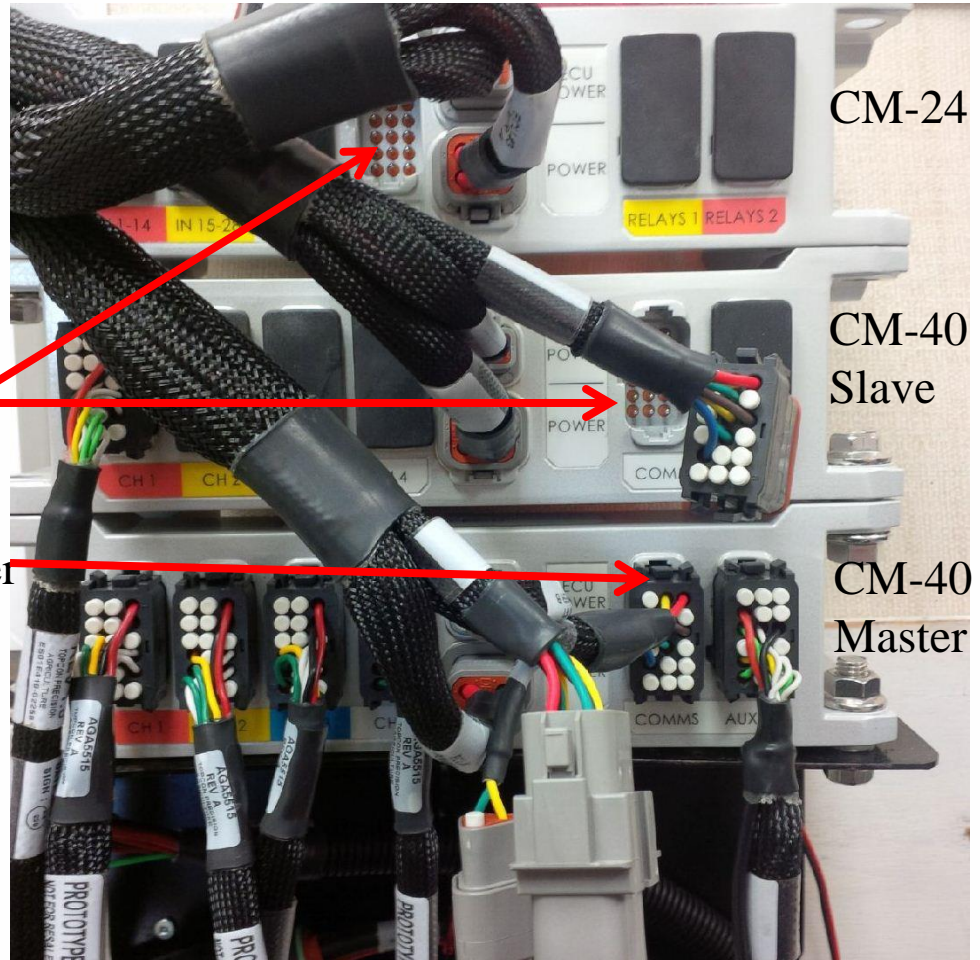


## Procedure for detecting Master ECU

Unplug all COMMS connectors in all of the ECU's except for the one to be detected.

COMMS Unplugged CM-40 slave and CM-24

COMMS Plugged in CM-40 Master





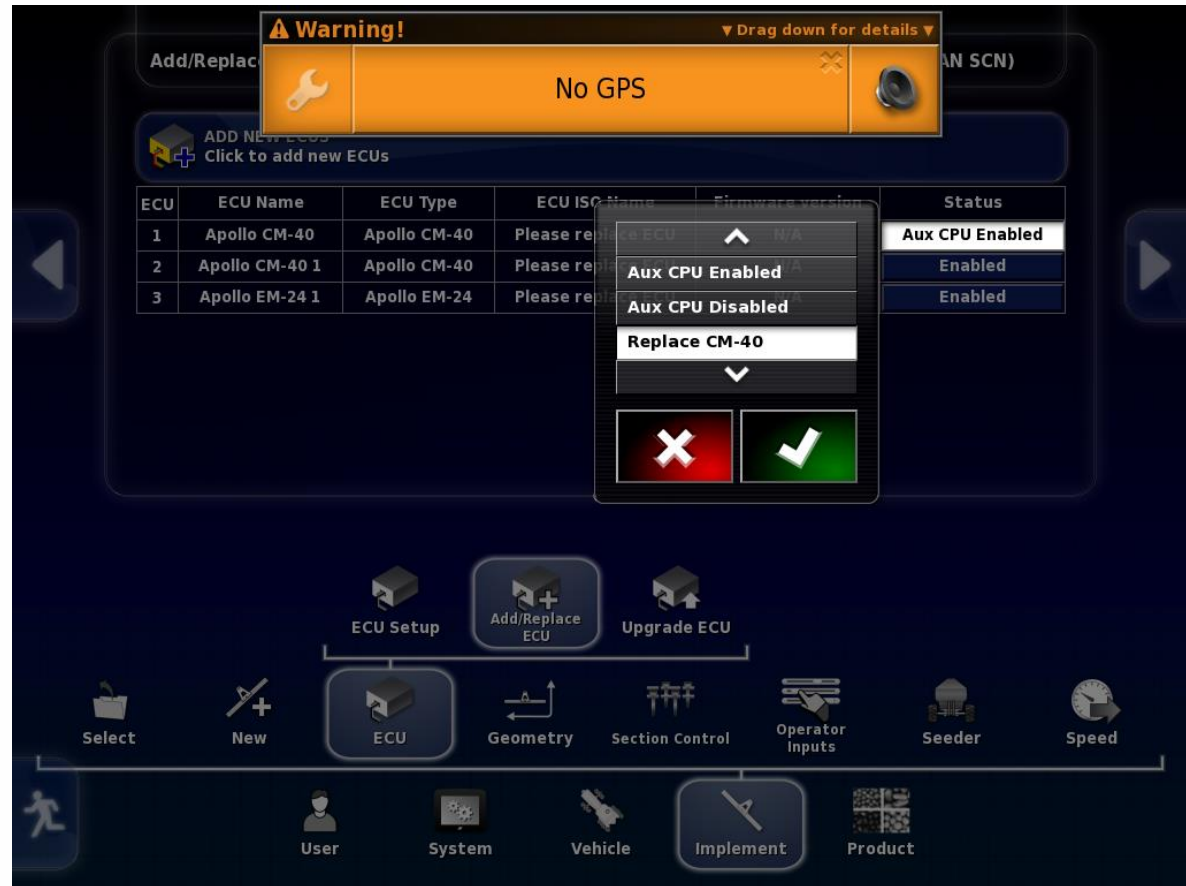
## Procedure for detecting Master ECU

Go to Implement/  
ECU/  
Add/Replace ECU

Press tab under Status  
corresponding to the  
ECU to be detected,

Select Replace CM-40

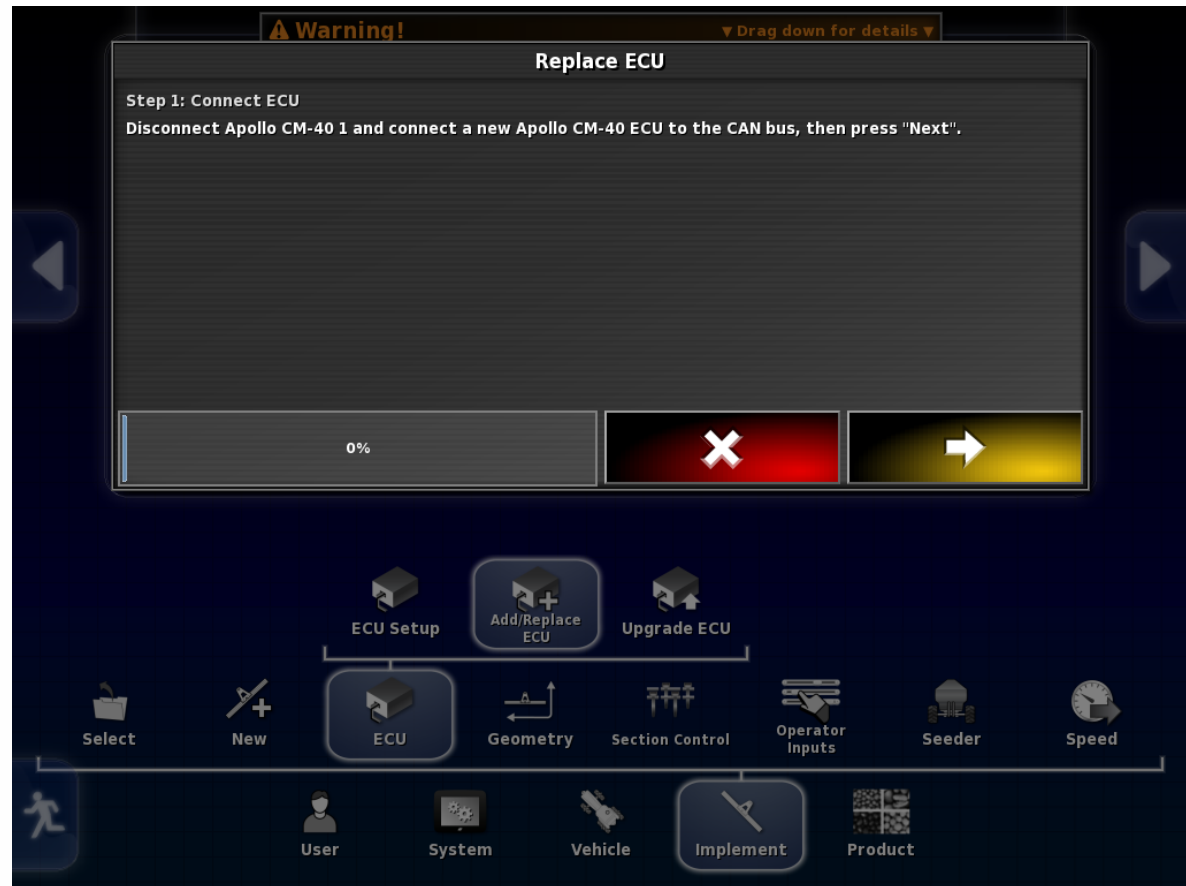
Press the Check mark





## Procedure for detecting Master ECU

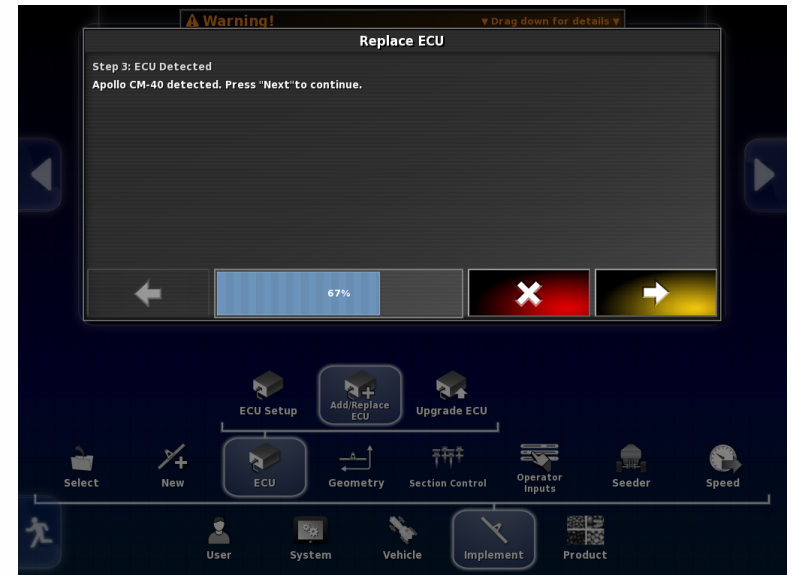
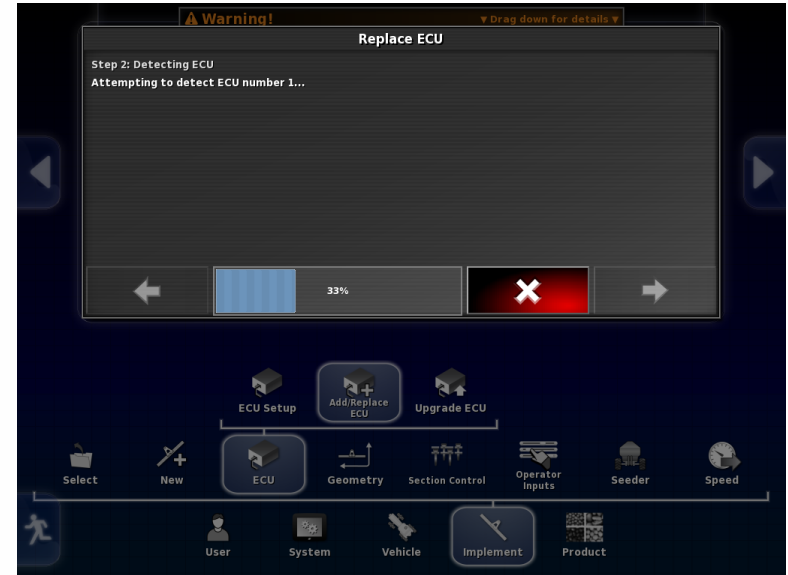
Follow the wizard instructions, when conditions met press the arrow at lower right.





## Procedure for detecting Master ECU

Once the ECU is detected and arrow turns yellow press to advance.





## Procedure for detecting Master ECU

Once the ECU is detected  
Name and Type of ECU  
will be displayed.  
Press green check mark  
to advance.

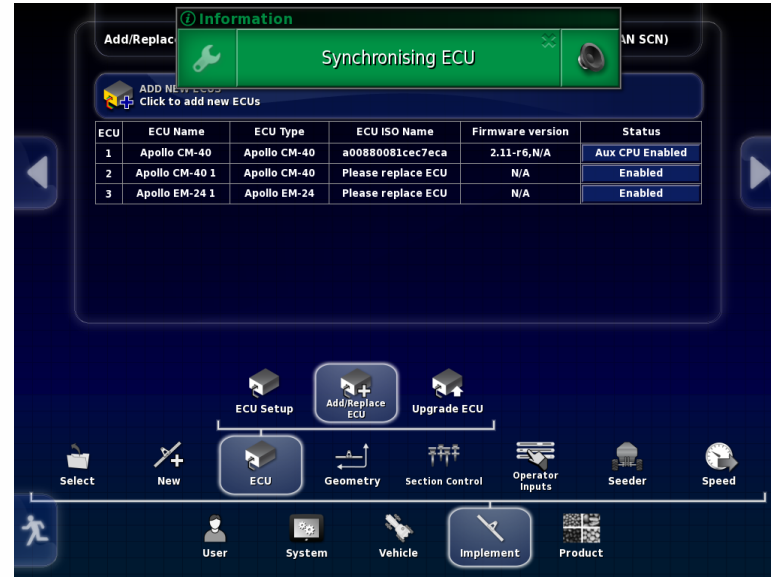






## Procedure for detecting Master ECU

The system should upload/  
Configure/Synchronize



If this does not start within a couple of minutes it may be necessary to unplug the ISO plug at the back of the tractor and plug it back in.





## Procedure for detecting Master ECU

When the upload is complete, the ECU ISO Name will be listed as well as the Firmware version currently on ECU.

If there is only one ECU on tank you are done.  
If there is more than one ECU follow the appropriate procedure for additional ECU's

Add/Replace ECU (Apollo) - 7700 5TANK-MTRG NH3(SCN) 2FAN\_3320-76 10SPCG(GRAN SCN)

ADD NEW ECUS  
Click to add new ECUs

ECU	ECU Name	ECU Type	ECU ISO Name	Firmware version	Status
1	Apollo CM-40	Apollo CM-40	a00880081cec7eca	2.11-r6,0.0.18	Aux CPU Enabled
2	Apollo CM-40 1	Apollo CM-40	Please replace ECU	N/A	Enabled
3	Apollo EM-24 1	Apollo EM-24	Please replace ECU	N/A	Enabled

ECU Setup Add/Replace ECU Upgrade ECU

Select New ECU Geometry Section Control Operator Inputs Seeder Speed

User System Vehicle Implement Product

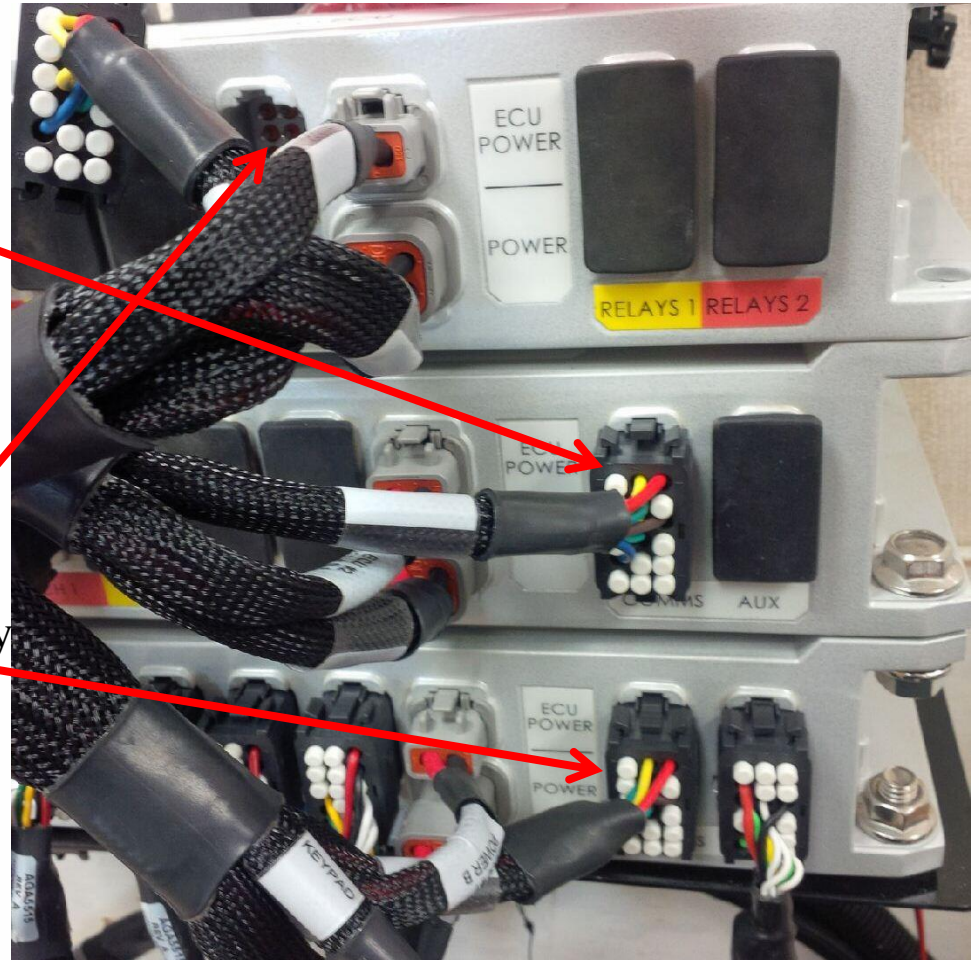


## Procedure for second CM-40 ECU

Plug the COMMS plug into  
the second CM-40 (slave)

CM-24 (I/O ECU) not detected

CM-40 (Master ECU) previously  
detected.

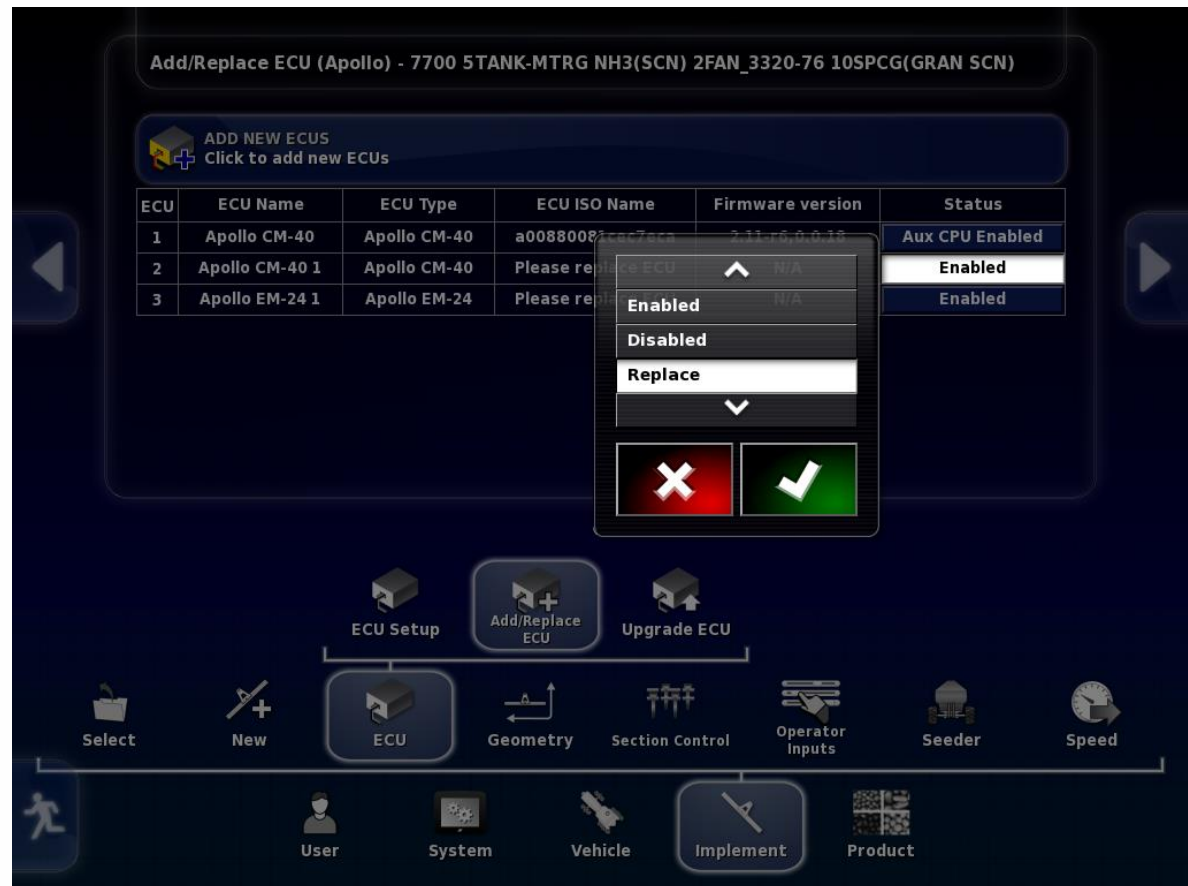




## Procedure for second CM-40 ECU

In settings go to  
Implement/  
ECU/  
Add/Replace ECU

Press tab under status  
for the second CM-40  
named CM-40 1,  
select replace and then  
press the check mark

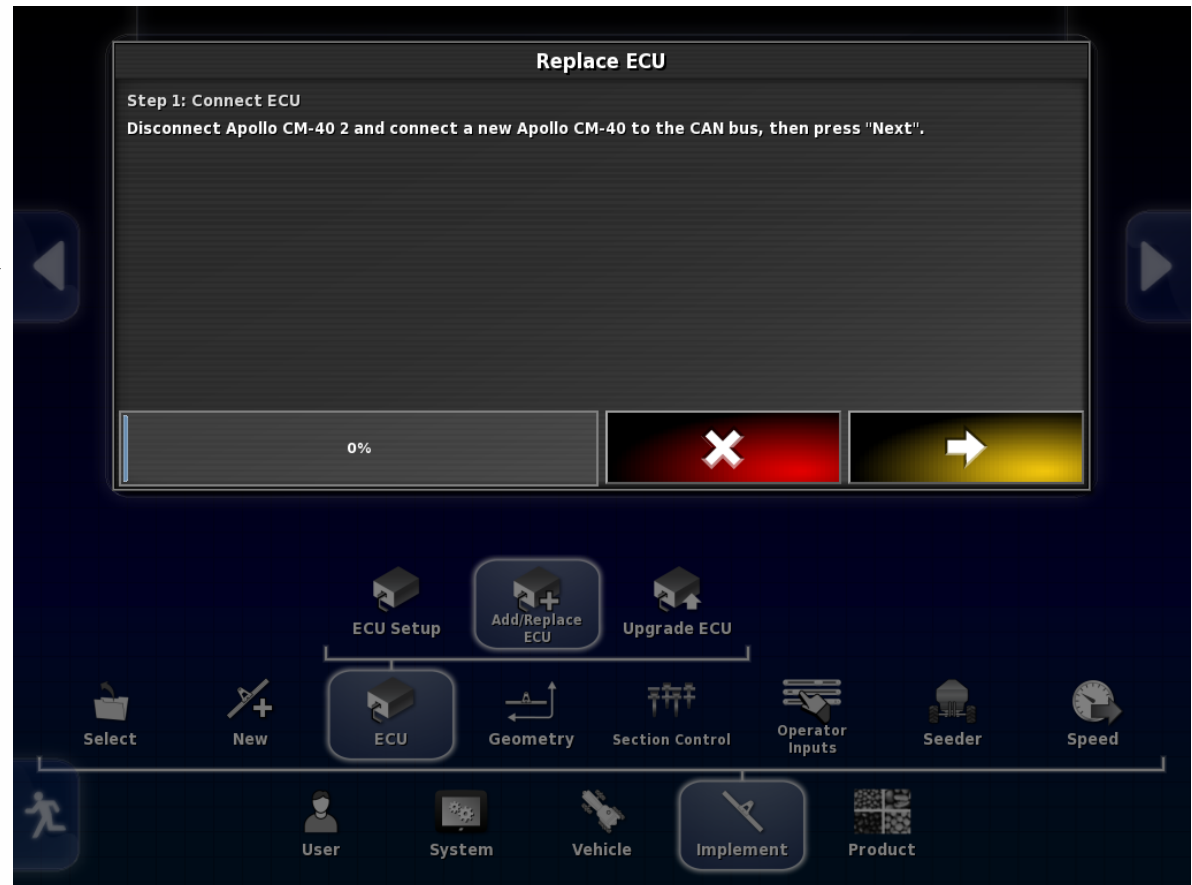






## Procedure for second CM-40 ECU

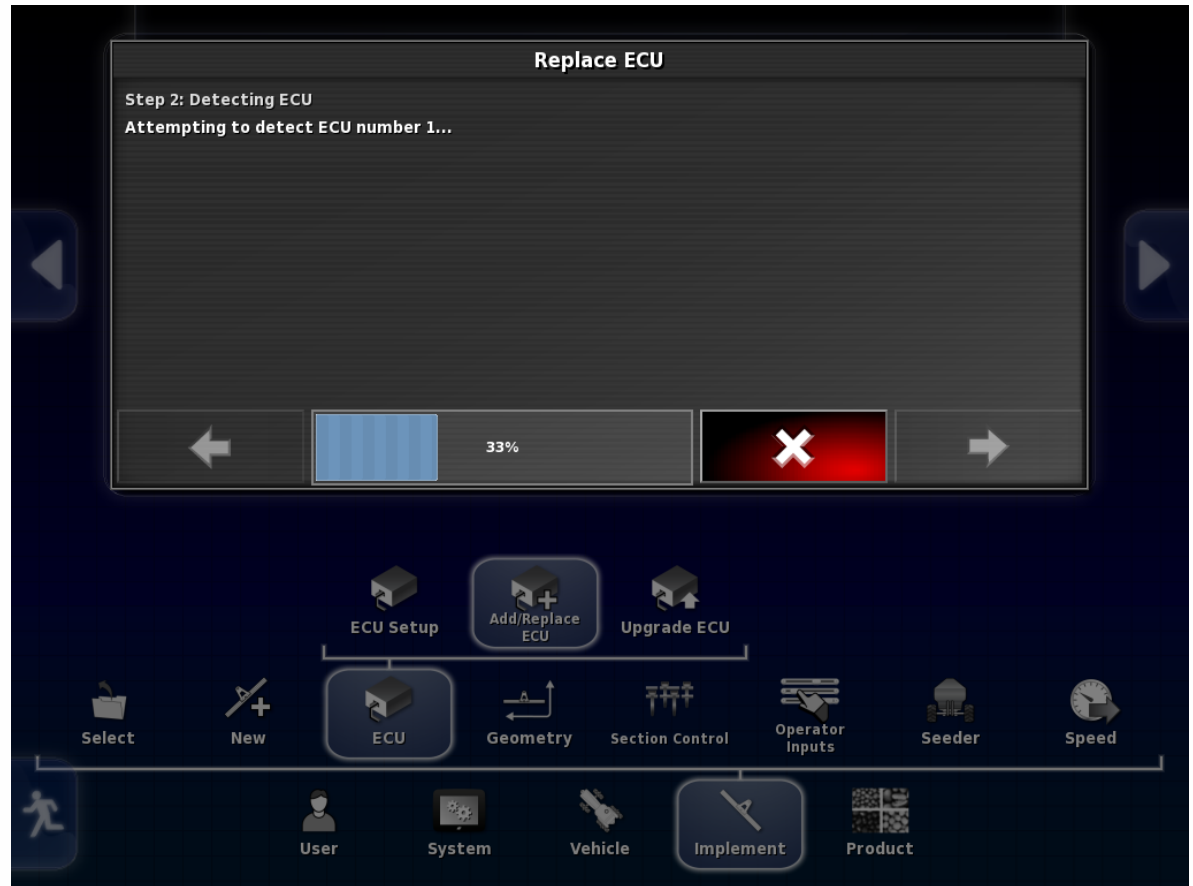
Make sure the second CM-40 is plugged in before pressing the arrow to advance.





## Procedure for second CM-40 ECU

ECU is being detected

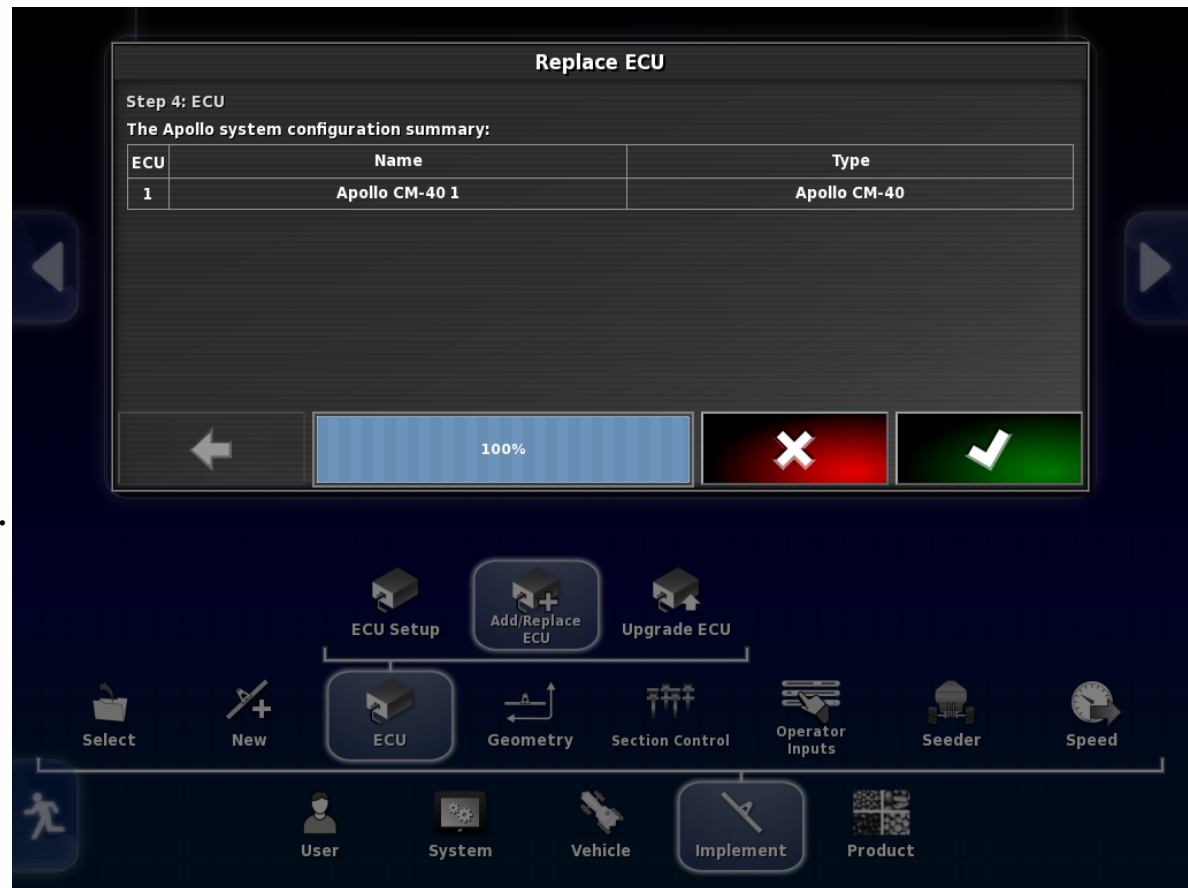




## Procedure for second CM-40 ECU

When detect is complete  
Name and Type are  
displayed. Name for  
second CM-40 that is  
detected is Apollo CM-40 1

Press check mark to advance.

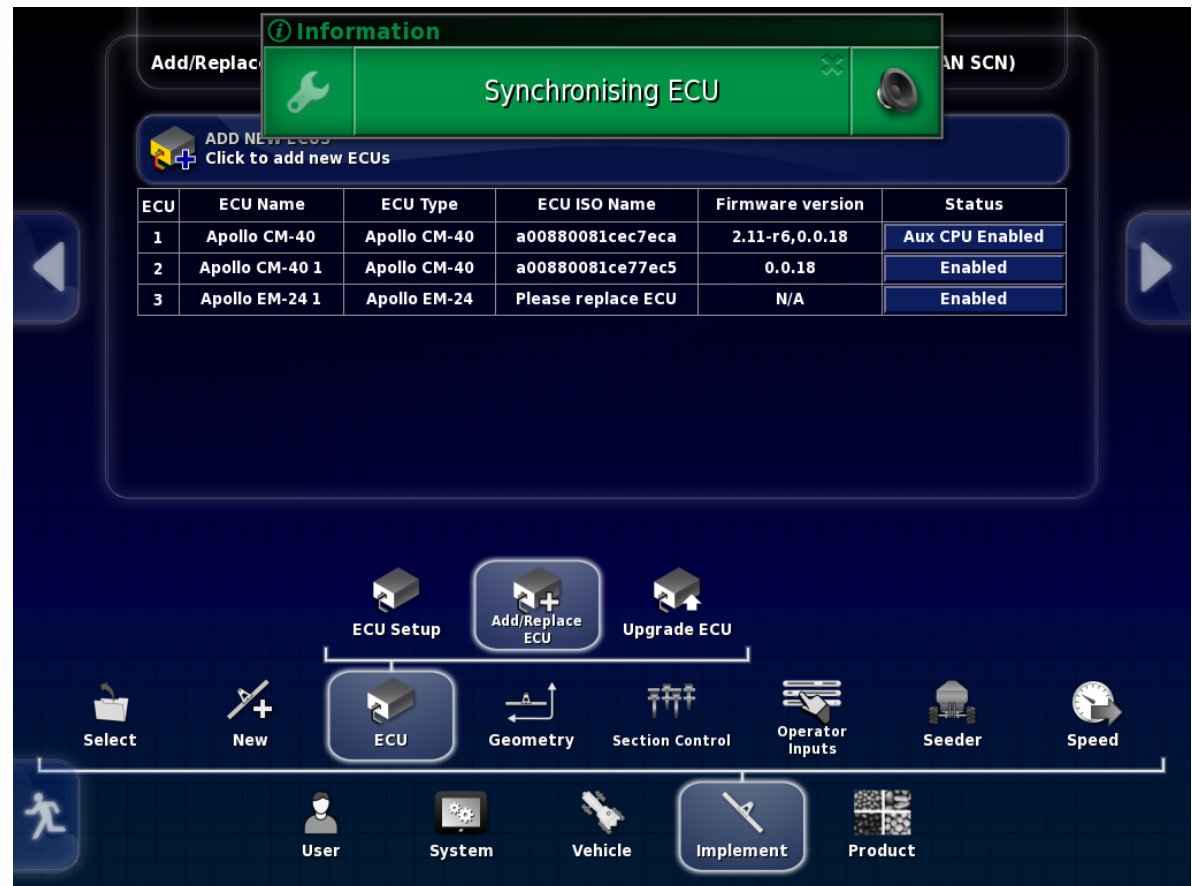




## Procedure for second CM-40 ECU

The system should upload/  
Configure/Synchronize  
When complete ISO Name  
and Firmware version will  
be displayed.

If this does not start within a  
couple of minutes it may be  
necessary to unplug the ISO  
plug at the back of the tractor  
and plug it back in.





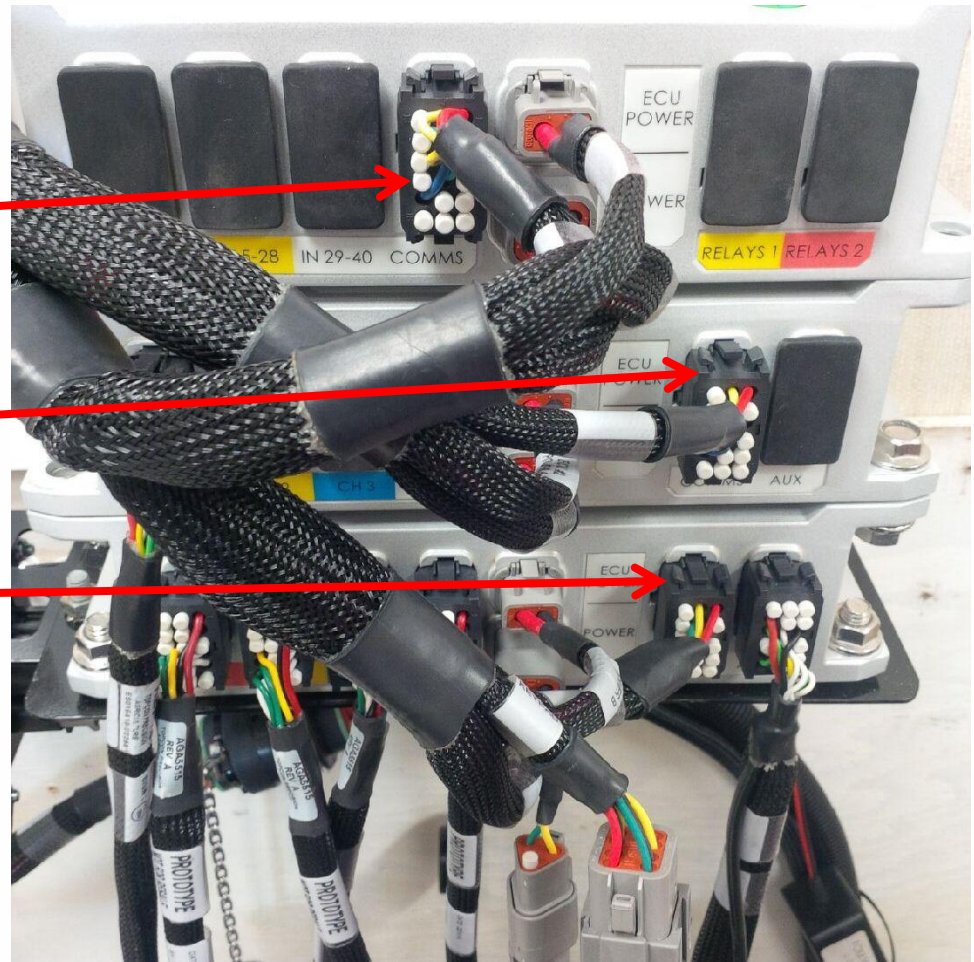


## Procedure for CM-24 (I/O ECU)

Plug COMMS connector into  
CM-24

CM-40 (Master ECU) slave  
(previously detected)

CM-40 (Master ECU)  
(previously detected)

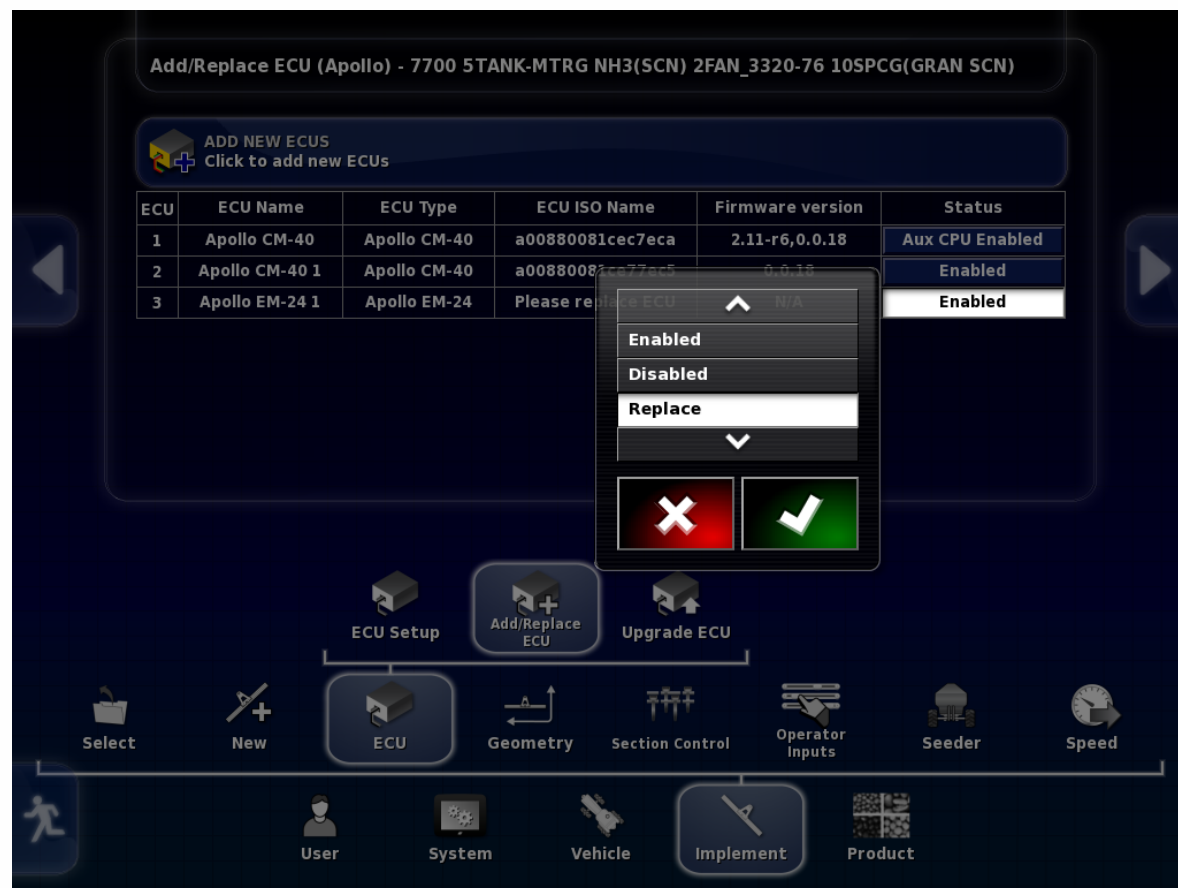




## Procedure for CM-24 (I/O ECU)

In settings go to  
Implement/  
ECU/  
Add/Replace ECU

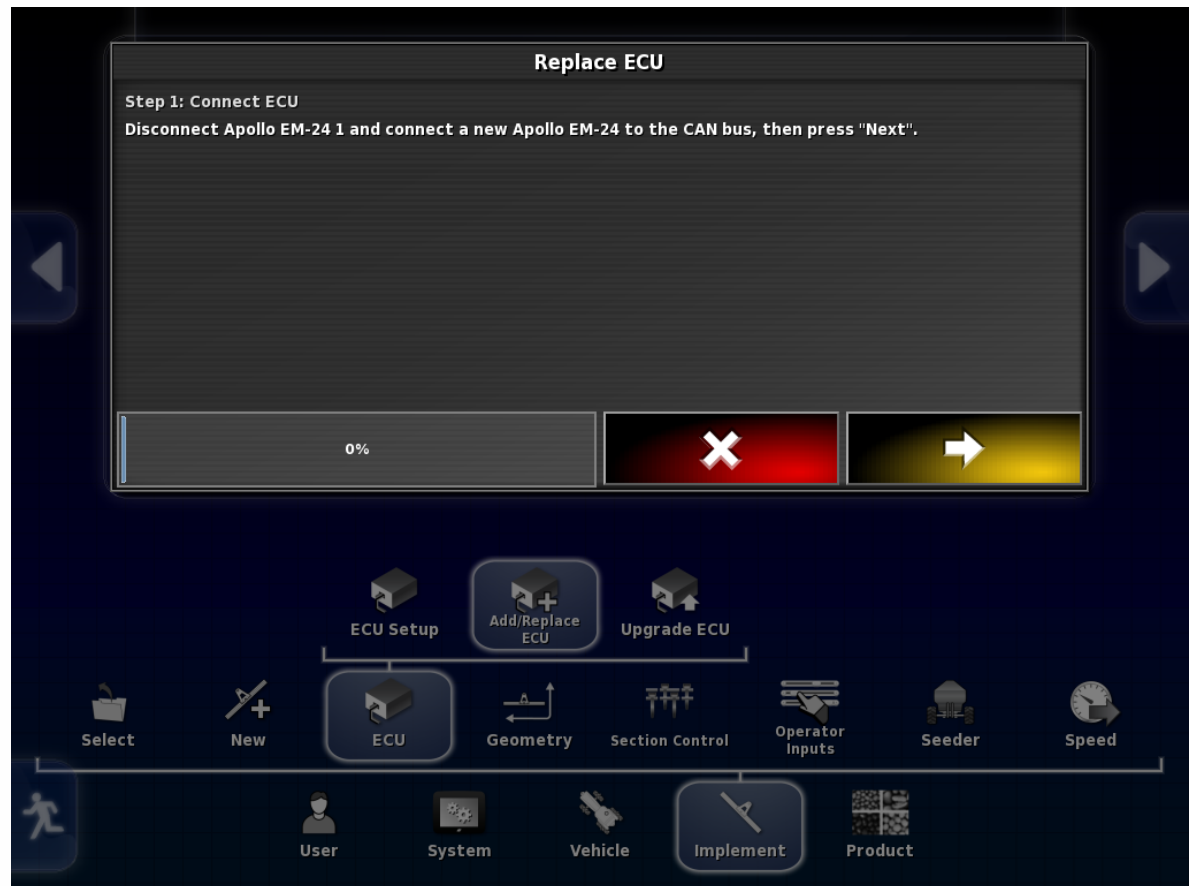
Press tab under Status  
for Apollo EM-24 1,  
select Replace,  
press check mark.





## Procedure for CM-24 (I/O ECU)

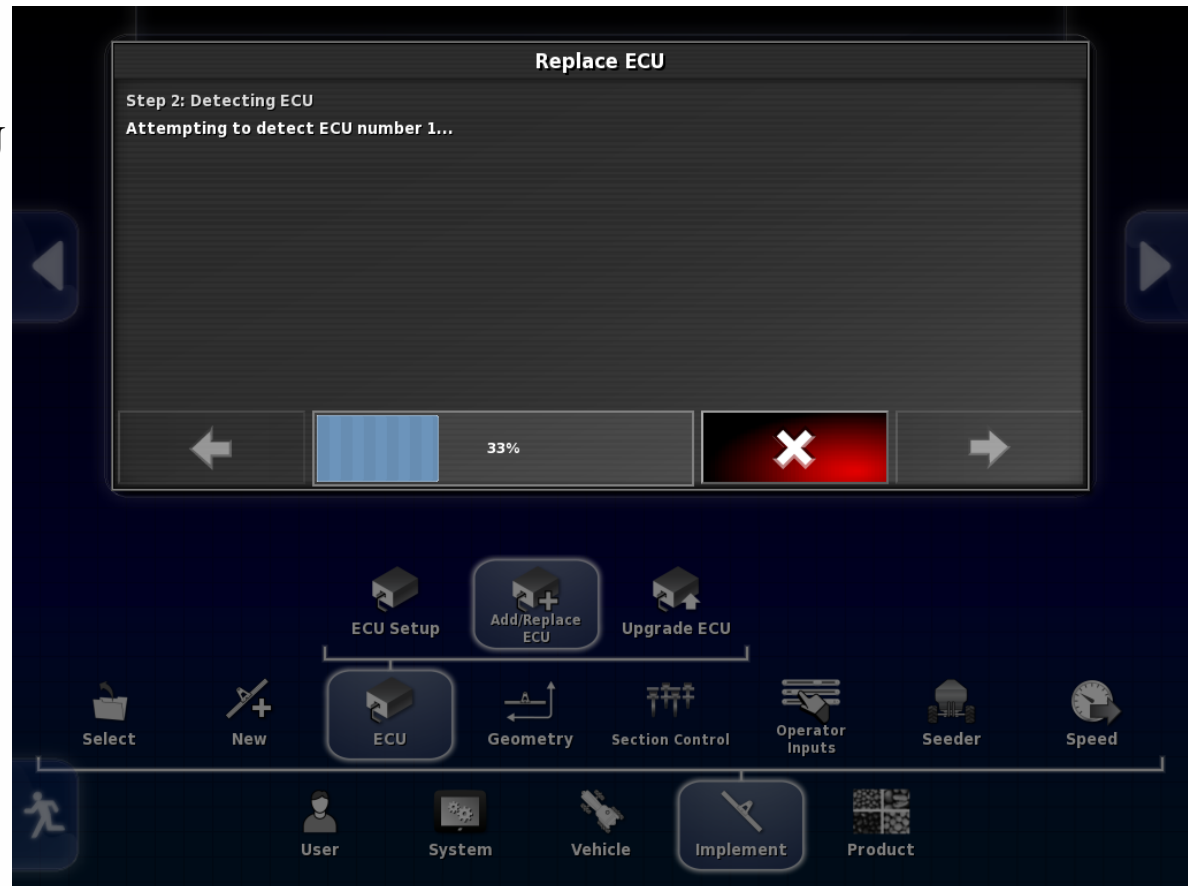
Make sure EM-24 1 is connected.  
Press the arrow to advance.





## Procedure for CM-24 (I/O ECU)

Attempting to detect ECU







## Procedure for CM-24 (I/O ECU)

ECU has been detected  
Name and Type displayed

Press check mark to  
advance.

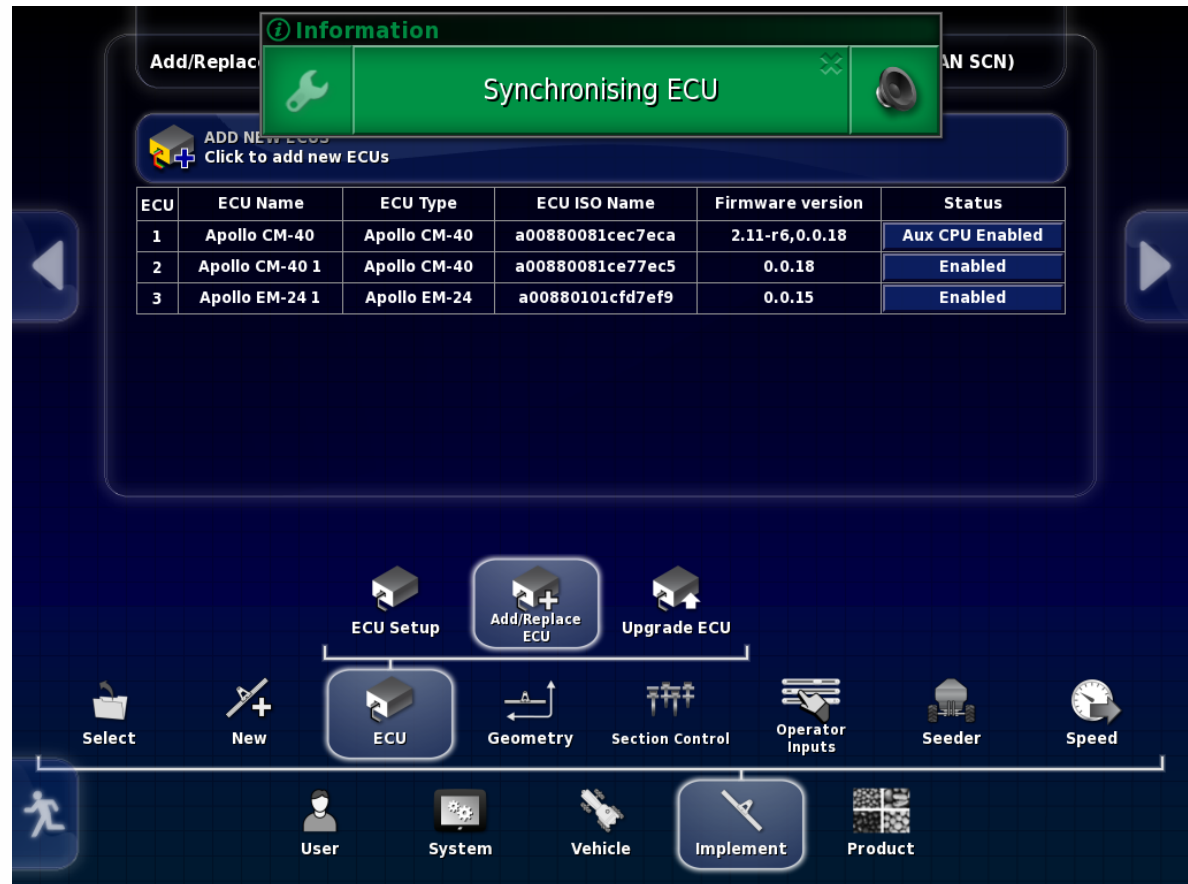




## Procedure for CM-24 (I/O ECU)

The system should upload/  
Configure/Synchronize

If this does not start within a couple of minutes it may be necessary to unplug the ISO plug at the back of the tractor and plug it back in.





## Procedure for CM-24 (I/O ECU)

When Synchronizing is complete ISO Name and Firmware version will be displayed for Apollo EM-24 1

If there is only one CM-24 on the machine you are finished.

If there is both ASC and Blockage there will be a second CM-24. Repeat the procedure for CM-24 for the second ECU.

