

A red Topcon tractor is shown from a side-rear perspective, pulling a Bourgault X30 Apollo irrigation system through a field of tall, dry grass. The irrigation system consists of a long red frame with multiple black wheels and numerous white flexible hoses extending from the tractor. The scene is set in a rural field under a clear sky.

**BOURGAULT**

**X30** Apollo | System

INGENUITY.

SIMPLICITY.

DURABILITY.

 **TOPCON**  
Precision Agriculture

[www.bourgault.com](http://www.bourgault.com)



# X30 Apollo System Upgrading Monitor Software & ECU Firmware





## Updating X30 Software

Bourgault Industries has supplied your dealership with a thumb drive loaded with the required files. Please use this thumb drive and skip to step 4.

The files may also be downloaded, listed below are the instructions how to download.

Please go to our download site at **download.bourgault.com**.

Enter code ( 3.18.513 ) – *the code is case sensitive and must be entered exactly.*

Press the submit code button

A screenshot of a web browser window displaying the Bourgault download page. The browser's address bar shows the URL "http://download.bourgault.com/cgi-bin/upload/download.cgi". The page has a red header bar. Below the header, there is a form titled "Enter Download Code:". The form contains a text input field with the code "3.18.513" entered. Below the input field is a button labeled "Submit Code". The browser window also shows a search bar with the Google logo and a "Share" button.



1. Download zip file attachment to a folder on your computer. File name will be [3.18.513.zip](#)
2. Extract files from the zip and put onto an empty thumb drive.
3. There will be about 15 files on the thumb drive make sure these files are not in a file folder, but in the root directory. Each time an Upgrade is performed a backup file will be added.

Name	Date modified	Type	Size
backup_1409359034.tar	8/30/2014 12:37 AM	GZ File	17 KB
bzImage-initramfs-x30	8/28/2014 6:12 AM	File	6,146 KB
install_mbr	3/26/2010 8:00 PM	Windows Comma...	1 KB
install_syslinux	3/23/2010 5:31 PM	Text Document	1 KB
mongoose_io_aux_fw.hex	8/29/2014 6:02 AM	HEX File	65 KB
mongoose_io_fw.hex	8/29/2014 6:02 AM	HEX File	193 KB
mongoose_slave_fw.hex	8/29/2014 6:02 AM	HEX File	288 KB
mongoose-ecu_aux_upgrade.tar	8/29/2014 6:02 AM	GZ File	177 KB
mongoose-ecu_upgrade.ipk	8/29/2014 6:02 AM	IPK File	1,894 KB
README	8/29/2014 6:02 AM	HTML Document	2 KB
rootfs.ext2	8/27/2014 6:16 AM	EXT2 File	49,152 KB
syslinux.cfg	3/24/2010 2:40 PM	CFG File	1 KB
syslinux	2/10/2011 4:09 PM	Application	28 KB
vesamenu.c32	2/16/2010 2:12 PM	C32 File	143 KB
x30-image-x30.tar	8/28/2014 6:12 AM	GZ File	154,709 KB
x30-rescue.sh	8/28/2014 6:12 AM	SH File	5 KB





- Put thumb drive into X30 to provision it for upgrade. Go to settings page (wrench symbol bottom left corner of X30) Select "User", "Access Level" touch "Provision USB for Upgrade" when confirm tab pops up select Yes.



- Remove thumb drive.
- Turn X30 off. Install thumb drive.
- Start up X30.
- Wait until you get a notification at top of screen to remove thumb drive. Then remove the thumb drive.



9. System will reboot and ask you if you want to do a touchscreen calibration but not necessary. **Select No.**
10. System will ask if you want to retain user settings. **Always select yes.**



11. On main screen, click the Bourgault button in the top left hand corner. Ensure that the software version shown is correct. (3.18.513bg)



12. Upgrade complete.

13. Check your profile and timings to make sure they are set properly. If using sectional control, section timing must be set.

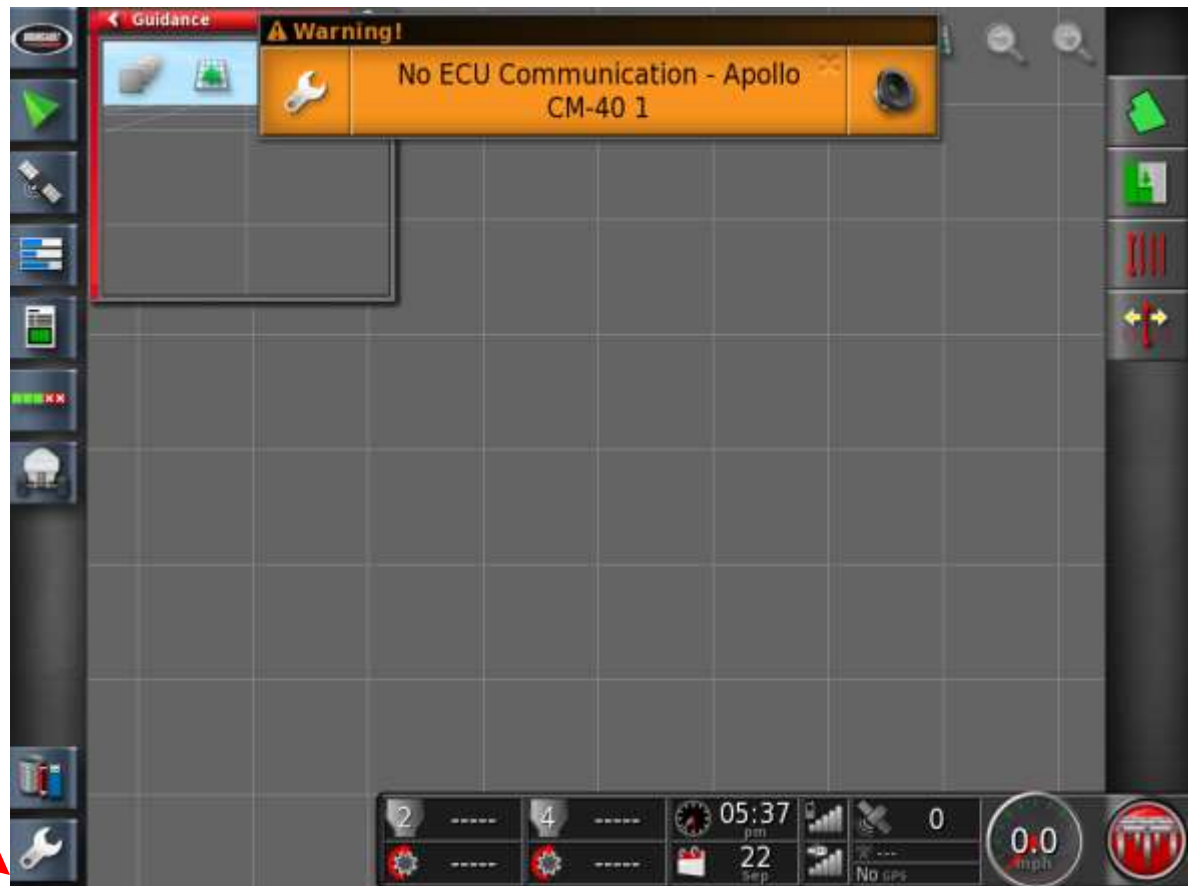
**14. When updating Software in monitor the firmware in the ECU(s) must also be updated . Follow the procedure in the following pages to upgrade firmware.**

**15. The procedure will be the same software and firmware versions will vary from pictures make sure you know the versions that you are installing. If you are not sure contact your service rep.**



To upgrade firmware, ECU must first be detected. If this is not the case refer to Detecting Apollo ECU's

Go to settings page by touching wrench in lower left of X30 screen

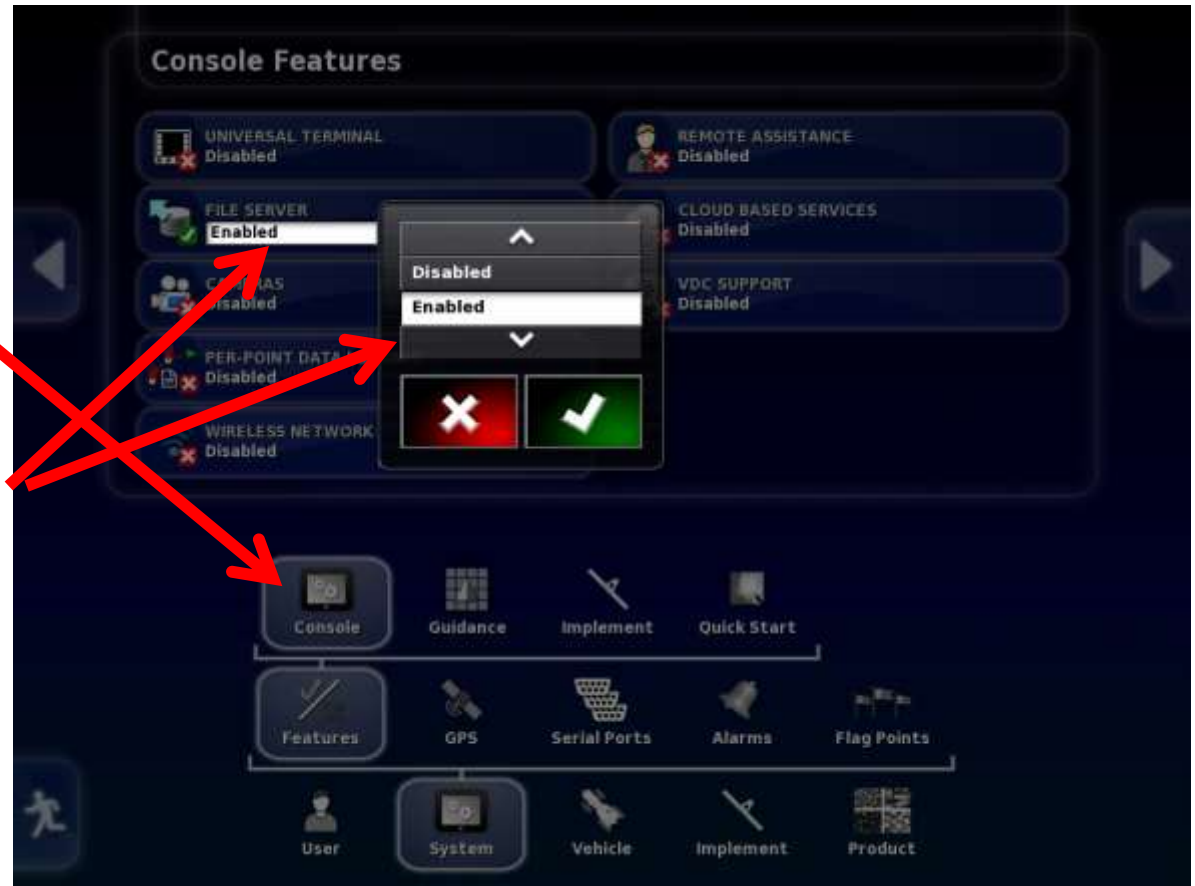






Go to  
System/  
Features/  
Console

Ensure File Server  
Is Enabled  
If not select  
Enabled and then  
press check mark





If ECU has been detected Id and firmware version will be here once ECU information is uploaded.

Select Implements/  
ECU/  
Upgrade ECU





In the right column under Firmware version, select green tab for ECU to be upgraded.

This will vary based on options selected with tank. There will be from one to four ECU's that may need to be upgraded





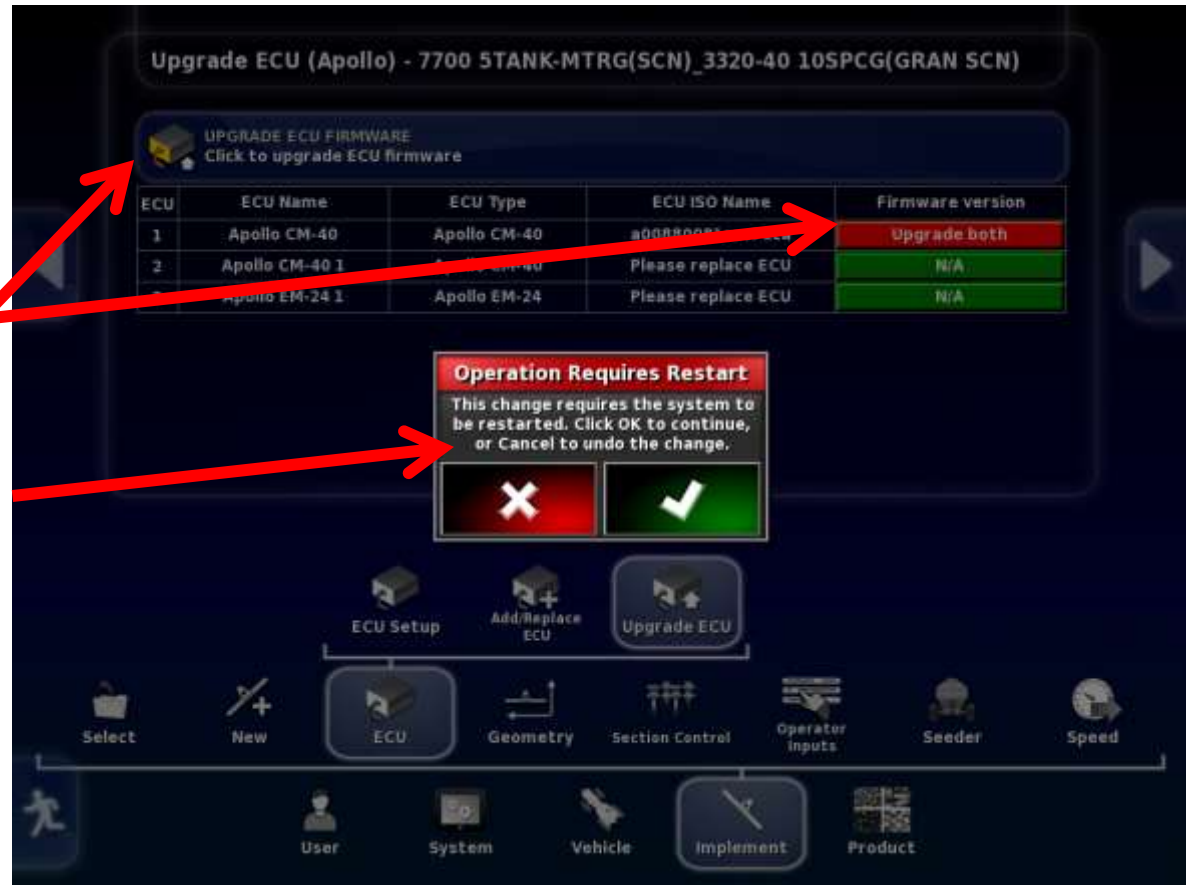
For Apollo CM-40  
(Master)  
select Upgrade both  
Then press check mark





The ECU to upgrade will Turn red,  
press the Upgrade ECU Firmware tab at the top of the page.

You will get warning that System will need to restart.  
Press Check mark.







You will be guided through the Firmware Upgrade with the help of a wizard.  
Read instructions and press right arrow  
When it turns yellow.

Insert the thumbdrive into the left side of the X30 when right arrow turns yellow it is Ready right arrow can be pressed.





A list of files on the  
Thumbdrive should show  
Up on screen

press the right arrow button.





Press Check mark  
To start Upgrade





Firmware transfer will begin. (This may take up to twenty minutes to complete.)





Once Upgrade is complete you will see this screen, press check mark.

**Wait until the Green Synchronizing bar goes away before pressing check mark.**

This will cause the monitor to shut down and restart.







If the firmware version does not upload after the monitor restarts, It will be necessary to power the ECU down by shutting tractor off or unplugging the ISO plug at the back of the tractor. (See next page)





If monitor fails to upload  
information from ECU unplug  
This ISO plug at the back of  
the tractor to cut power to the  
ECU.





Monitor will show that it is Synchronising and Configuring ECU once this is complete both the Main and Aux. Firmware should be displayed and match what was uploaded. If one or both are not correct this process must be repeated for the one(s) not matching the desired firmware.



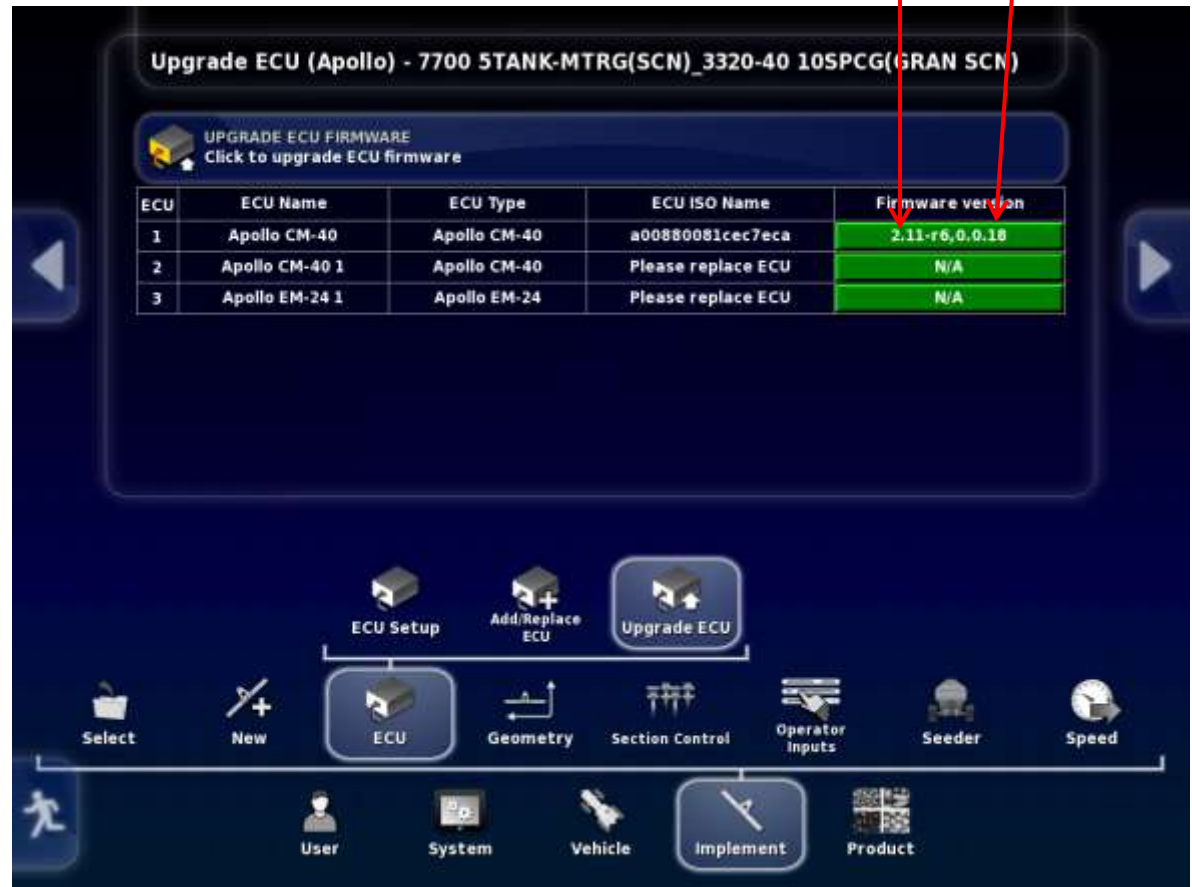


If both Main and Aux. firmware are correct the upgrade for the Apollo CM-40 (Master) is complete.

If you only have one ECU on the tank, (four tank metering or less) Upgrade is complete.

If your tank has 5 tank metering, sectional control, or blockage follow procedure following for ECU's present.

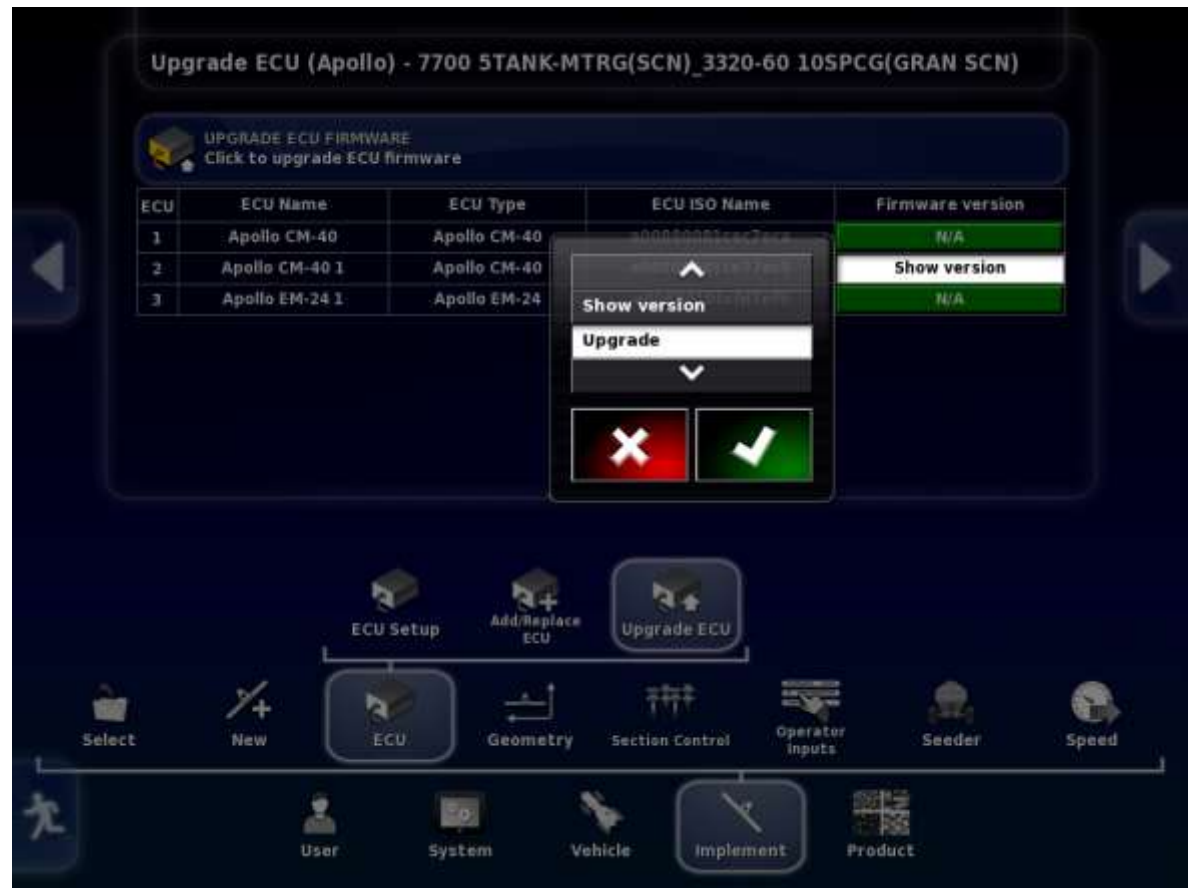
Main Aux





If tank has more that one CM-40 follow this upgrade procedure

Go to Implement/  
ECU/  
Upgrade ECU  
Press tab for CM-40 1  
(slave)  
select upgrade, press  
Check mark.







Tab will turn red  
Operation Requires Restart  
warning will come up,  
press the check mark





Follow steps of wizard like the procedure for the master.





When firmware has completely loaded  
Press the green check mark.

The monitor will restart.

The ECU should synchronize and the  
firmware version is only visible for the Aux  
firmware. You may have to shut  
the tractor off or unplug the ISO Plug at the  
back of the tractor, and plug it back in if it  
does not upload the info from the ECU.





**In order to Upgrade the Main Firmware you will have to create a “dummy” profile. Do this after you have Upgraded all ECU’s on machine. (Once Upgrade is complete you must then return to original profile)**

Go to Implement/  
New/  
Factory

Select a new implement  
with only one ECU select

The first item in each list

6000/

6280/

6280 2 TANK MTRG 1FAN

Select Apollo for ECU type





Name new profile UPGRADE

While the system is re-starting  
unplug all of the COMMS  
connectors from all ECU's except  
the one you want to Upgrade,  
CM-40 (Slave)(the slave only has 1 or 2  
Channels used if you have a slave the  
Master will have all 4 Channels used)



Comms Port being Detected

Comms Unplugged







Go to Implement/  
ECU/  
Add/Replace ECU

**Add/Replace ECU (Apollo) - UPGRADE**

ADD NEW ECUS  
Click to add new ECUs

ECU	ECU Name	ECU Type	ECU ISO Name	Firmware version	Status
1	Apollo CM-40	Apollo CM-40	Please replace ECU	N/A	Aux CPU Enabled

ECU Setup Add/Replace ECU Upgrade ECU

Select New ECU Geometry Operator Inputs Seeder Speed

User System Vehicle Implement Product



Select Replace CM-40  
Press check mark.



Follow directions of wizard  
to replace ECU.





Press the Arrow when it turns yellow to advance to next step.





Once complete press green tab with  
Check mark.  
Monitor will re-start.  
If ECU is not detected unplug ISO plug  
at back of tractor





If ECU is selected should get a green tab indicating the ECU information is being uploaded.



Once this is complete you can now Upgrade the firmware, select Update Main CPU, press check mark.





The right tab will turn red.  
Press the Upgrade ECU Firmware tab  
at the top to begin Upgrade.



Will get warning that a restart must occur  
if you proceed. Press the check mark.







Wizard will guide you through the  
Firmware update.

Insert Thumbdrive with Upgrade  
into USB port on side of X30





Upgrade files should be visible.



Once complete press check mark to initiate restart.





Once firmware is detected check both Main and Aux firmware to make sure they are the correct versions.

You will now have to switch profiles back to the original profile of your actual machine.

Re-plug all of the COMMS connectors into the proper ECU's.



You may have to shut down/unplug ISO connector at the back of the tractor to get ECU information to upload.

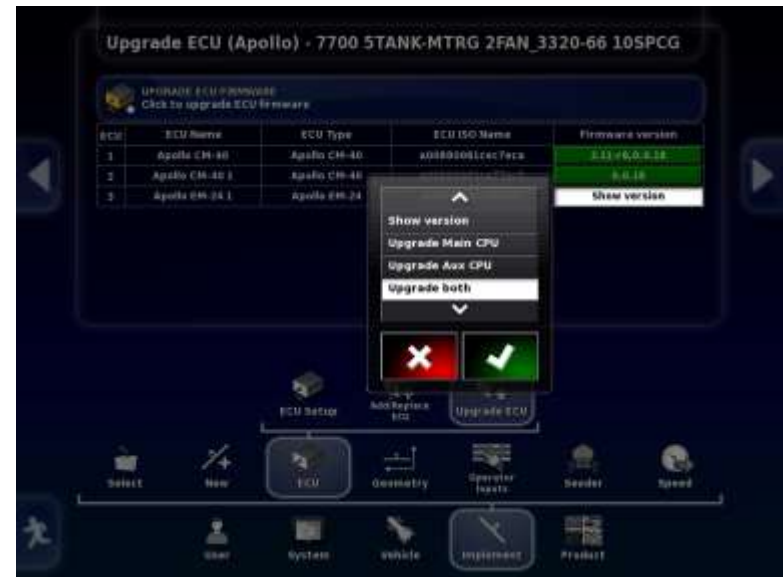
This completes the Upgrade for the Main portion of the CM-40 1 (slave Master ECU, 5 tank and 6 tank machines)



**If tank has either sectional control or blockage or both firmware for Apollo EM-24 must also be completed.**  
**This must be done for each EM-24 on machine. There will be one EM-24 for sectional control and one EM-24 for blockage. (blockage EM-24 mounted on drill)**

Go to Implement/  
ECU/  
Upgrade ECU

Press tab to right of EM-24 to be  
Upgraded, select Upgrade both,  
press the check mark





Tab selected will turn red.

Press the tab labelled  
Upgrade ECU Firmware  
to initiate Upgrade





Should get warning  
that a restart is required.

Press the check mark.







Follow steps given by wizard.





Once firmware is loaded press the check mark at bottom right of X30 screen.





Monitor will restart

If monitor does not detect ECU power down by shutting tractor off or unplugging the ISO plug at the back of the Tractor.

Once synchronized the firmware should be visible, Check that it is the correct version.

If only one EM-24 you are finished.

If you have a second EM-24 repeat procedure for second EM-24. (Second EM-24 will be named Apollo EM-24 2)  
Upgrade complete





The X30 software version for spring 2015: 3.18.513bg

The firmware version for Apollo ECU's for spring 2015:

CM-40 main: 2.12-r8

CM-40 auxiliary: 1.0.2

EM-24: 0.1.6