



BOURGAULT

X30

Monitor/Controller

INGENUITY.

SIMPLICITY.

DURABILITY.

 **TOPCON**
Precision Agriculture

www.bourgault.com



Rebooting the Bridge

The following steps will help you force the Bridge to reconfigure to the X30 settings.

BOURGAULT

X30

Monitor/Controller

Select Feature



VIRTUAL TERMINAL
Disabled



REMOTE ASSISTANCE
Disabled



FILE SERVER
Disabled



CAMERAS
Disabled



PER-POINT DATA LOGGING
Disabled



WIRELESS NETWORK
Disabled



Console



Guidance



Implement



Features



GPS



Serial Ports



Alarms



Flag Points



Area Counters



User



System



Vehicle



Implement



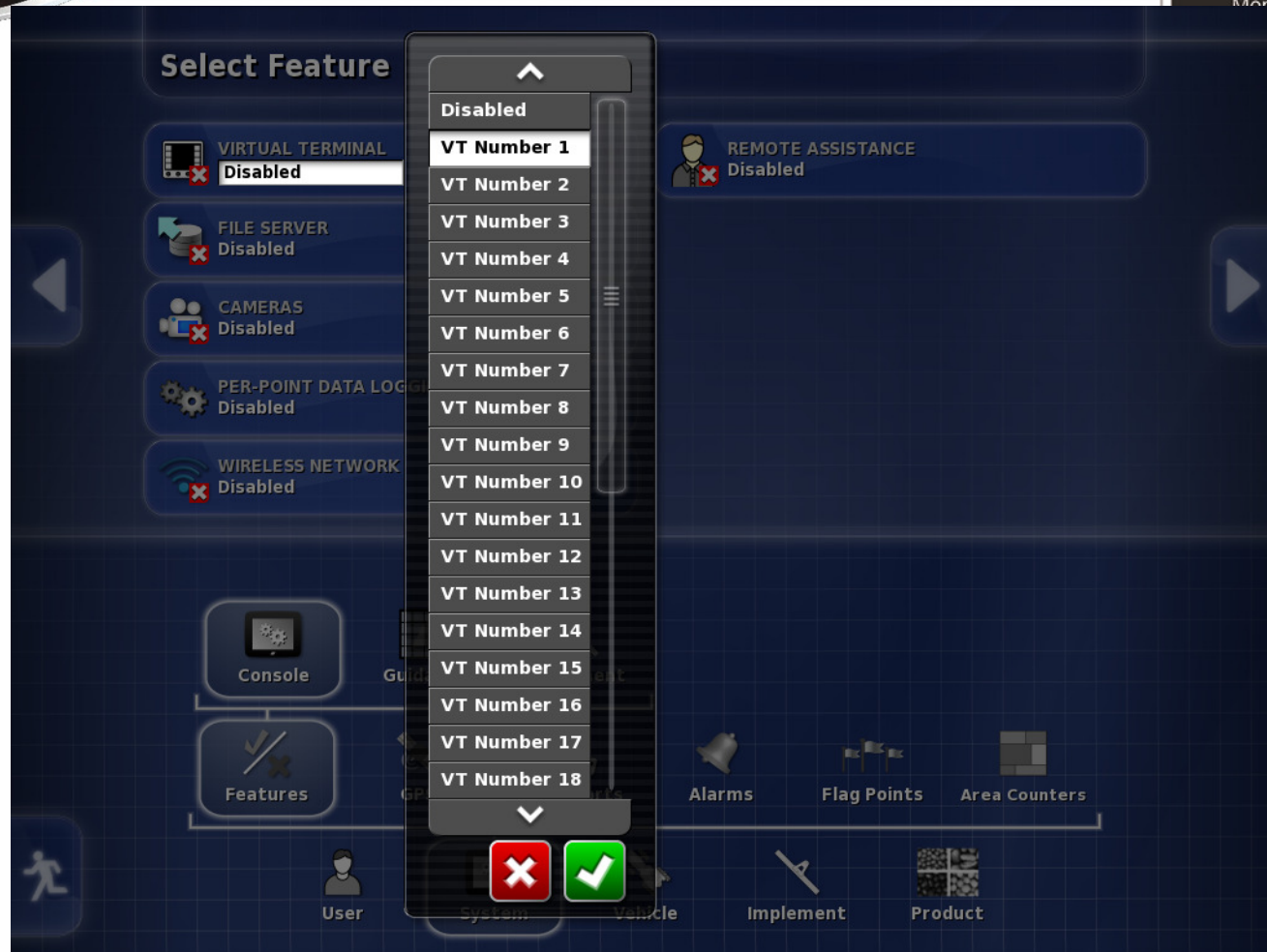
Product

Enter System/Features/Console and touch Virtual Terminal

BOURGAULT

X30

Monitor/Controller



Select VT Number 1 then press the green check

BOURGAULT

X30

Monitor/Controller



Go to Implement / New / Custom then press the green check

BOURGAULT

X30

Monitor/Controller

New Implement Type



Press the green check mark

BOURGAULT

X30

Monitor/Controller

Steering: DISENGAGED

New Implement Type

+ New Implement



IMPLEMENT NAME
BRIDGE FIX



Custom



Factory



Select



New



ECU



ECU Simulation



Geometry



Section Control



Switch Box



Seeder



User



System



Vehicle



Implement



Product

Rename this product BRIDGE FIX then press the green check

BOURGAULT

X30

Monitor/Controller



New Implement Setup

Step 1: Implement Control

Select the type of implement control that this console will be responsible for:

IMPLEMENT CONTROL
None

Overall Progress: 0%



Select



New



ECU



Geometry



Section Control



Master Switch



User



System



Vehicle



Implement



Product

Leave the Implement at None and press the yellow arrow

BOURGAULT

X30

Monitor/Controller

New Implement Setup

Step 2: Implement Function

Select the function performed by the implement:

IMPLEMENT FUNCTION
Sprayer



Overall Progress: 50%



Select



New



ECU



Geometry



Section Control



Master Switch



User



System



Vehicle



Implement



Product

Leave it a Sprayer and press the yellow arrow

BOURGAULT

X30

Monitor/Controller



New Implement Setup

Step 3: Save Configuration

Implement setup complete. Press "Okay" to apply these settings and restart the console.



Overall Progress: 100%



Select



New



ECU



Geometry



Section Control



Master Switch



User



System



Vehicle



Implement



Product

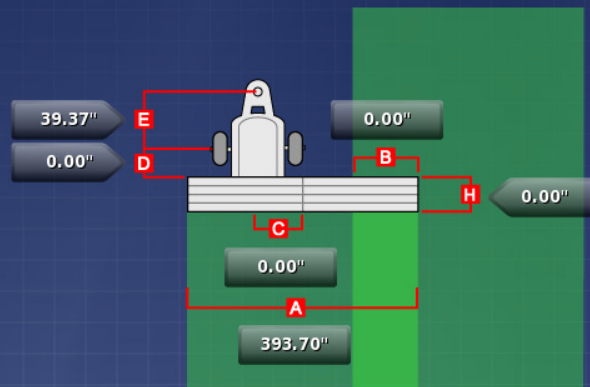
Press the Green Check

BOURGAULT

X30

Monitor/Controller

Implement Geometry - Pivoted_080514_0718



Select



New



Geometry



Section Control



Master Switch



User



System



Vehicle



Implement



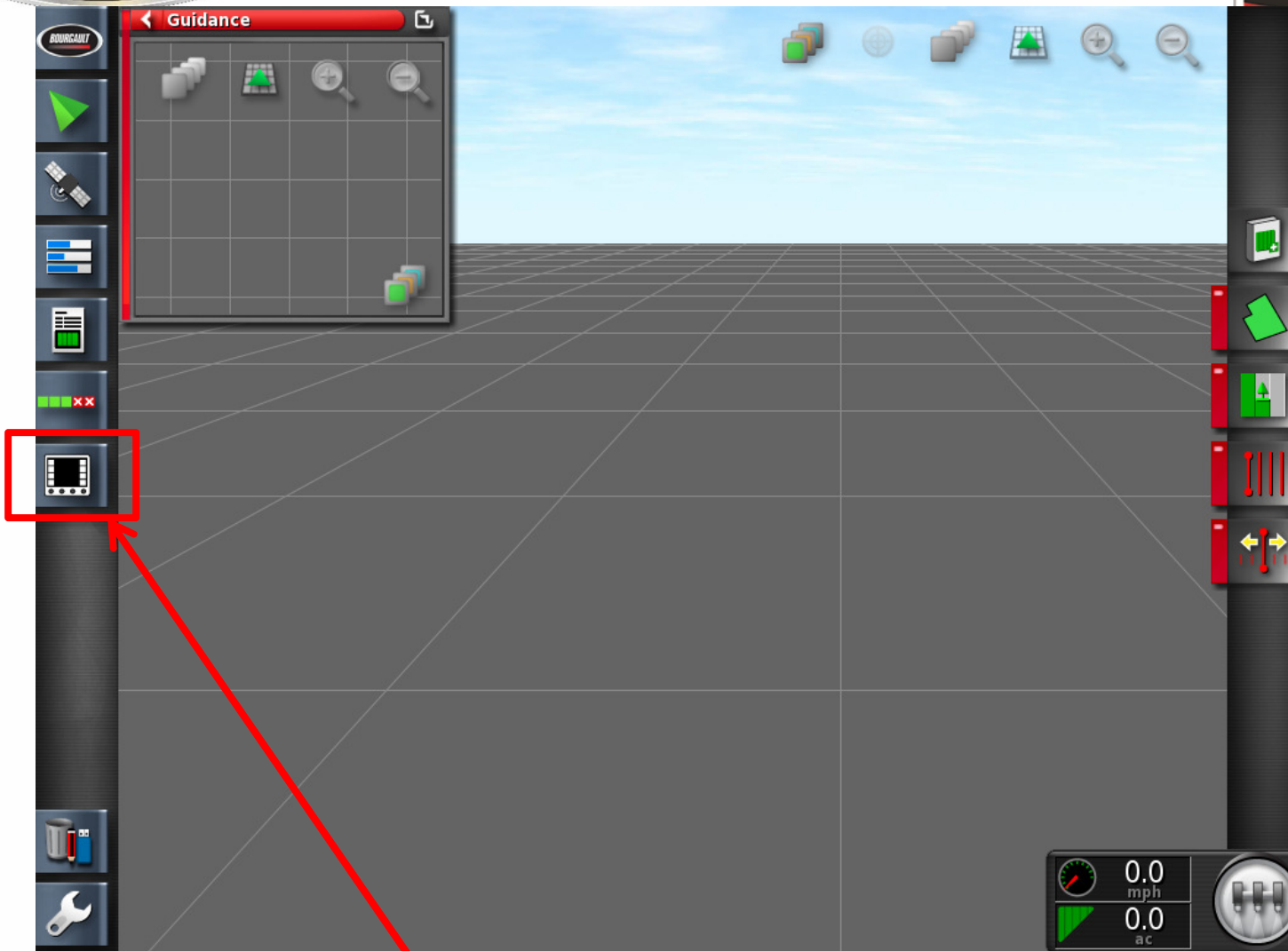
Product

Touch on the Running Man to go to the operating page

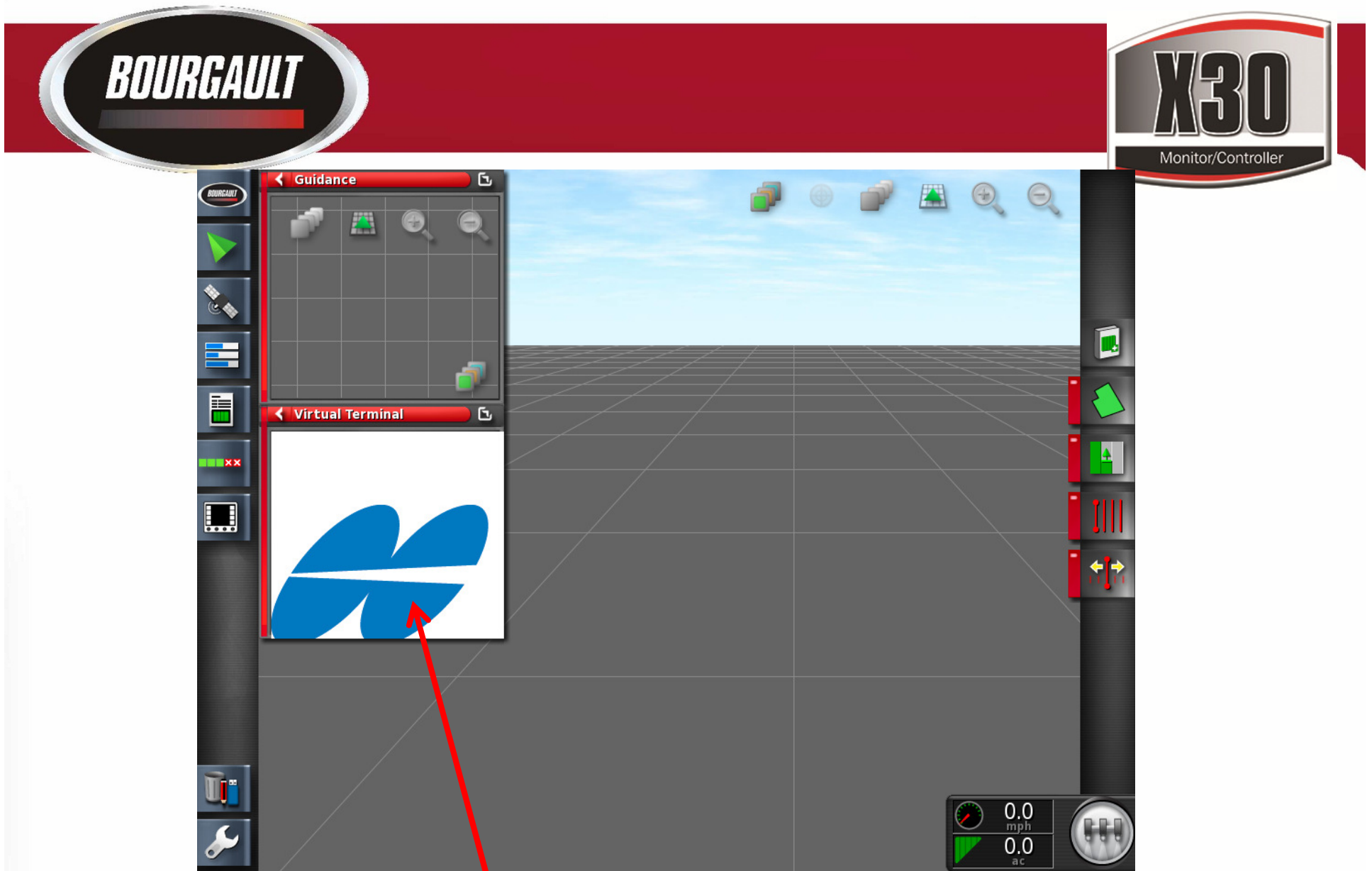
BOURGAULT

X30

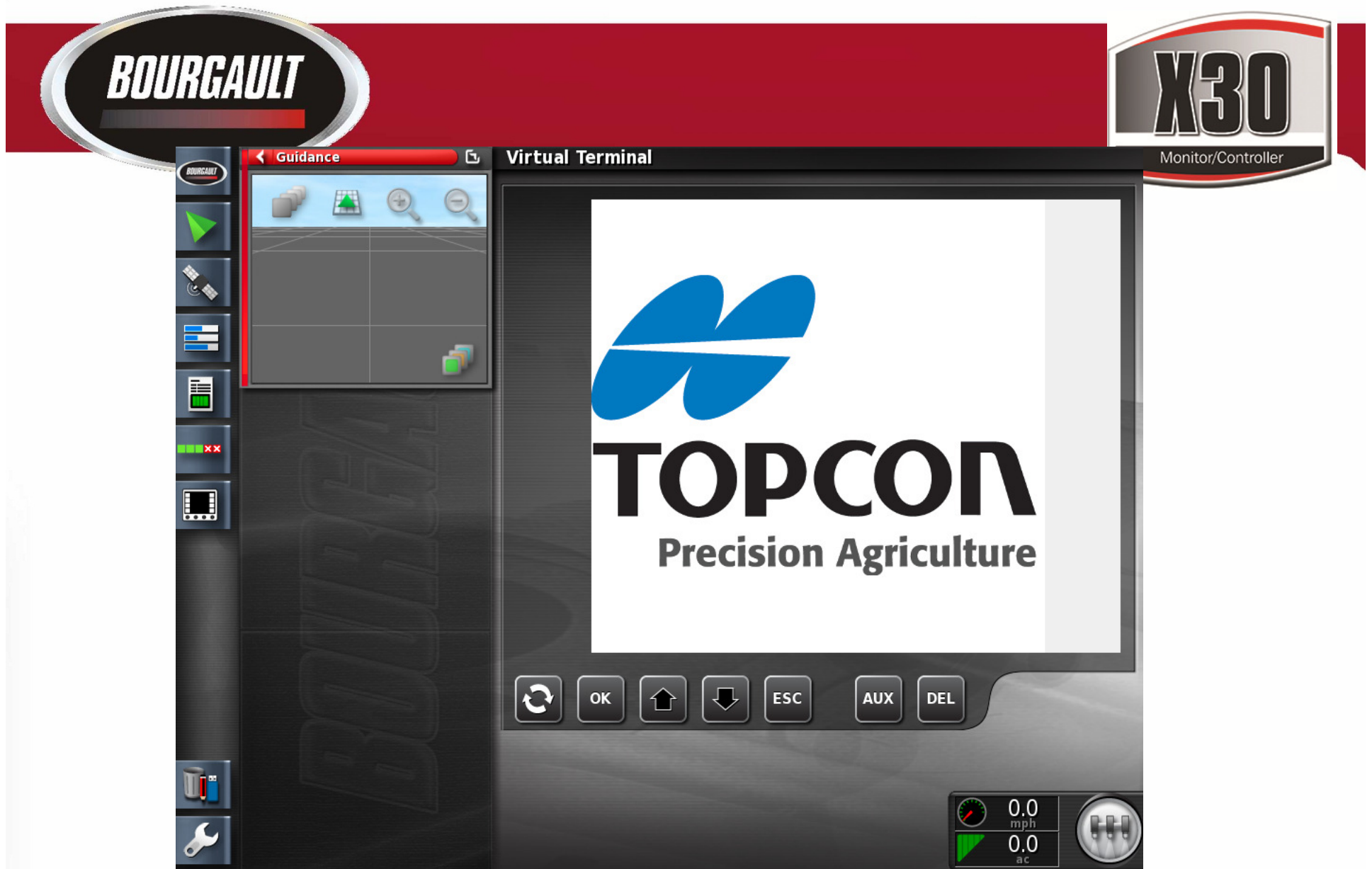
Monitor/Controller



Touch the VT terminal icon



Touch and hold the VT mini view then drag it to the right



Turn off the X30 then unplug the Tank Harness at the back of the tractor. Once the harness is disconnected turn on the X30 again.

BOURGAULT

X30

Monitor/Controller

Guidance

About

BOURGAULT

8 May, 2014 07:41:05 am

Software Version:
3.16.36bg

Copyright © 2002-2013
Topcon Precision Agriculture
All rights reserved

Virtual Terminal

Select	Speed (Manual)	CovRate	Fan RPM	Press.	Toggle Screen
All	5.0 mph	0.0 ac/hr	2307 rpm	0.00 psi	
Tank	Rate	Prod Rem			
Tank1 [Red Box] SELECT	100.0 lb/ac	10961.9 lb		Preset	
Tank2 [Red Box] SELECT	100.0 lb/ac	7737.8 lb		INC DEC Master [Red Box]	

[Refresh] [OK] [Up] [Down] [ESC] [AUX] [DEL]

0.0 mph
0.0 ac

Wait for a screen like this to come up (this may take several minutes), at this time you will get an alarm. After the alarm comes up reconnect the harness.

BOURGAULT

X30

Monitor/Controller

Guidance

About

BOURGAULT

8 May, 2014 10:08:36 pm

Software Version:
3.16.36bg

Copyright © 2002-2013
Topcon Precision Agriculture
All rights reserved

Virtual Terminal

Select	Speed (Manual)	CovRate	Fan RPM	Press.
All	5.0 mph	0.0 ac/hr	0 rpm	0.00 psi

Tank

Tank	Rate	Prod Re
Tank1	100.0 lb/ac	10961.8 lb
Tank2	100.0 lb/ac	737.8 lb

Toggle Screen

Preset

INC

DEC

Master

OK **ESC** **AUX** **DEL**

0.0
mph

0.0
ac

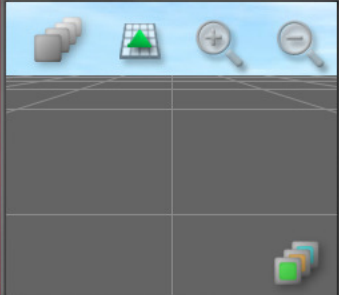
Press the Toggle Screen tab

BOURGAULT

X30

Monitor/Controller

Guidance



About

BOURGAULT

8 May, 2014 11:02:28 pm

Software Version:
3.16.36bg

Copyright © 2002-2013
Topcon Precision Agriculture
All rights reserved

Virtual Terminal

AreaNum	TotArea	SubArea	TankNum	Weight	
1	440.5 ac	437.9 ac	1	4576 lb	Toggle Screen
Tank		Rate	Prod	Rem	Settings
Tank1		100.0 lb/ac	10961.9		Reset SubArea
Tank2		100.0 lb/ac	7737.8		Reset Area
					Manual Speed
					Diags.

SELECT

SELECT

OK

ESC

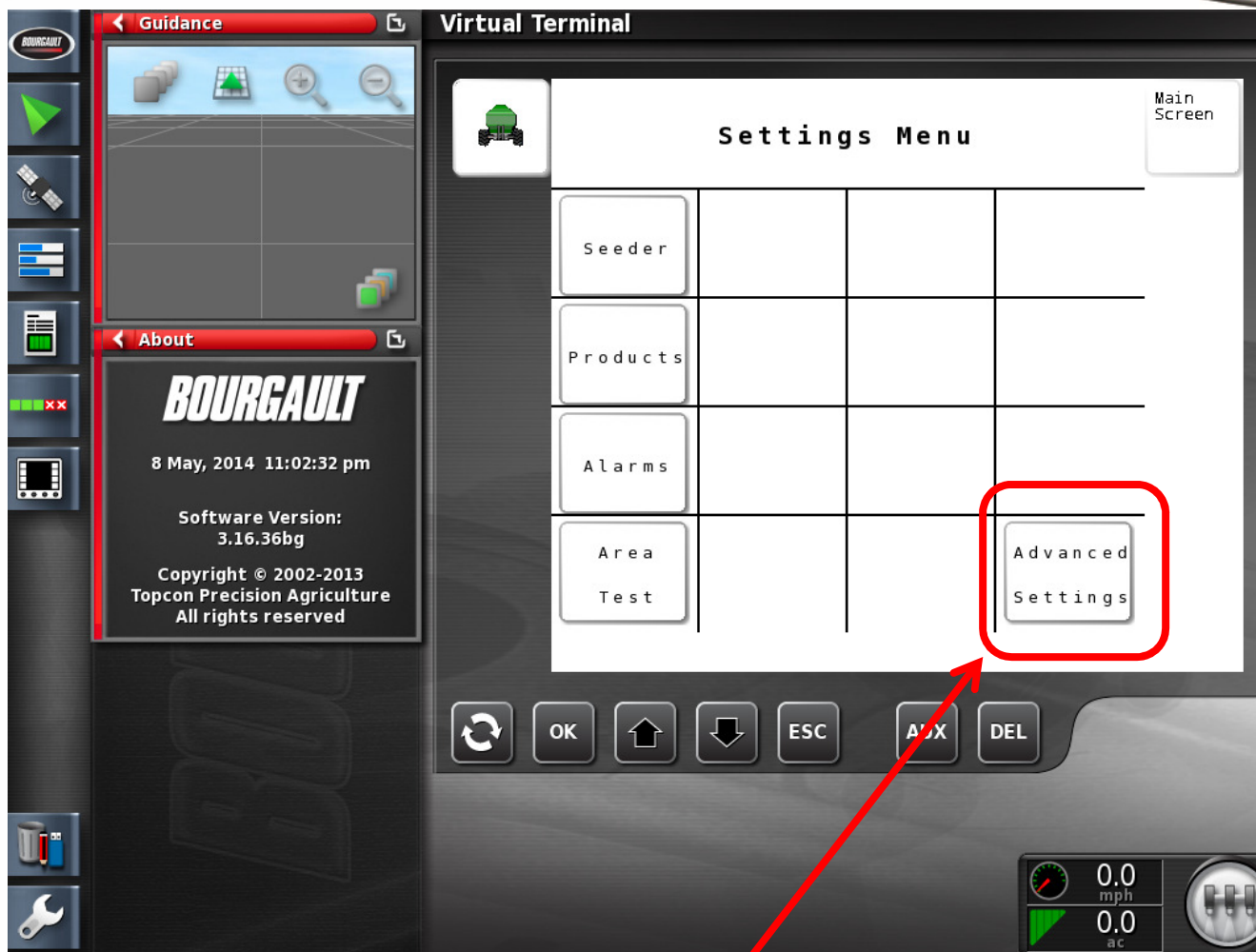
AUX

DEL

0.0
mph

0.0
ac

Press the Settings



Press Advance Settings

BOURGAULT

X30

Monitor/Controller

Guidance

About

BOURGAULT

8 May, 2014 11:02:36 pm

Software Version:
3.16.36bg

Copyright © 2002-2013
Topcon Precision Agriculture
All rights reserved

Virtual Terminal

Advanced Settings

Enable TC	Disabled
Enable TC Boom	Disabled
Switch VT	
Factory Reset	

Settings Menu

Main Screen

OK

ESC

AUX

DEL

0.0 mph

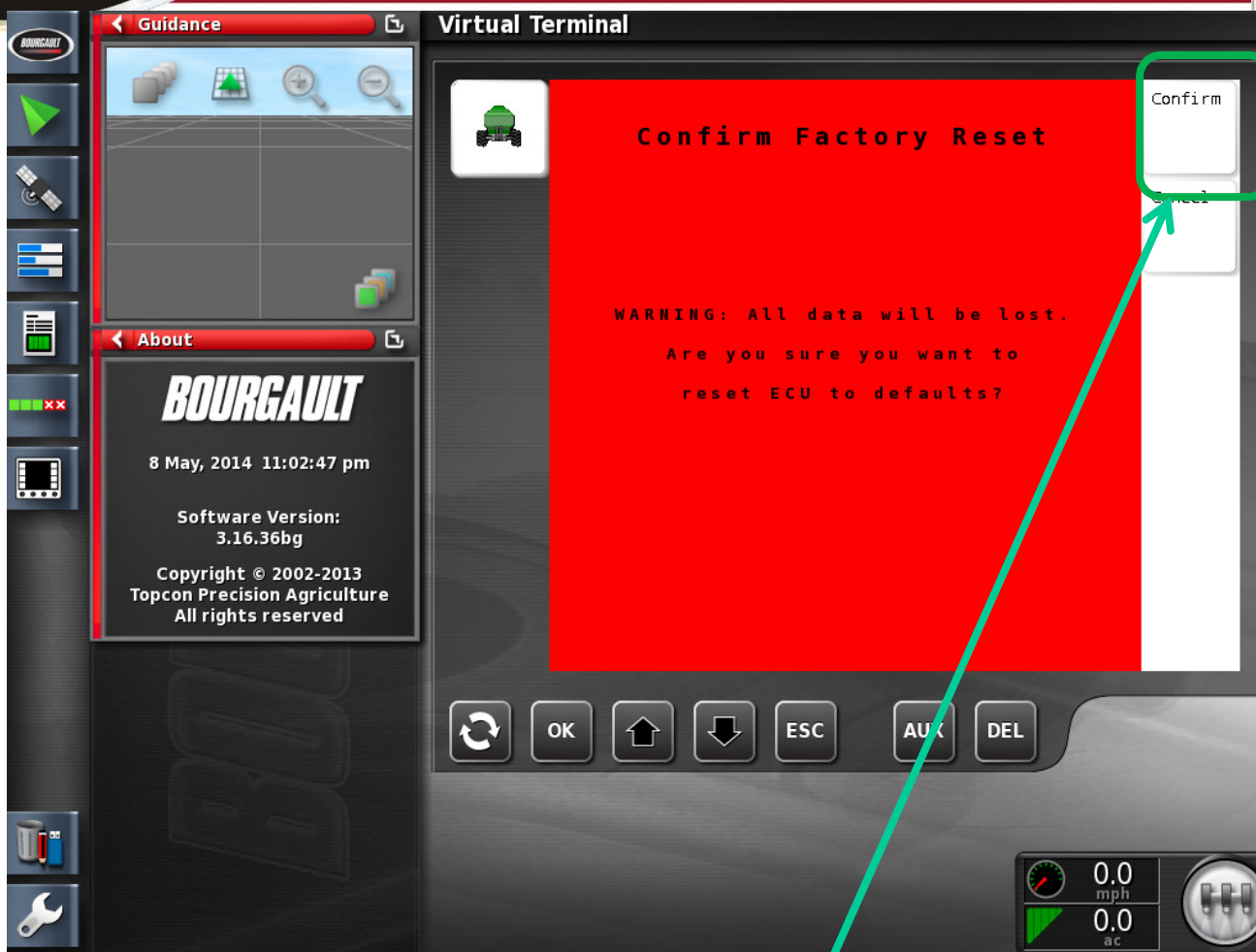
0.0 ac

Press Factory Reset

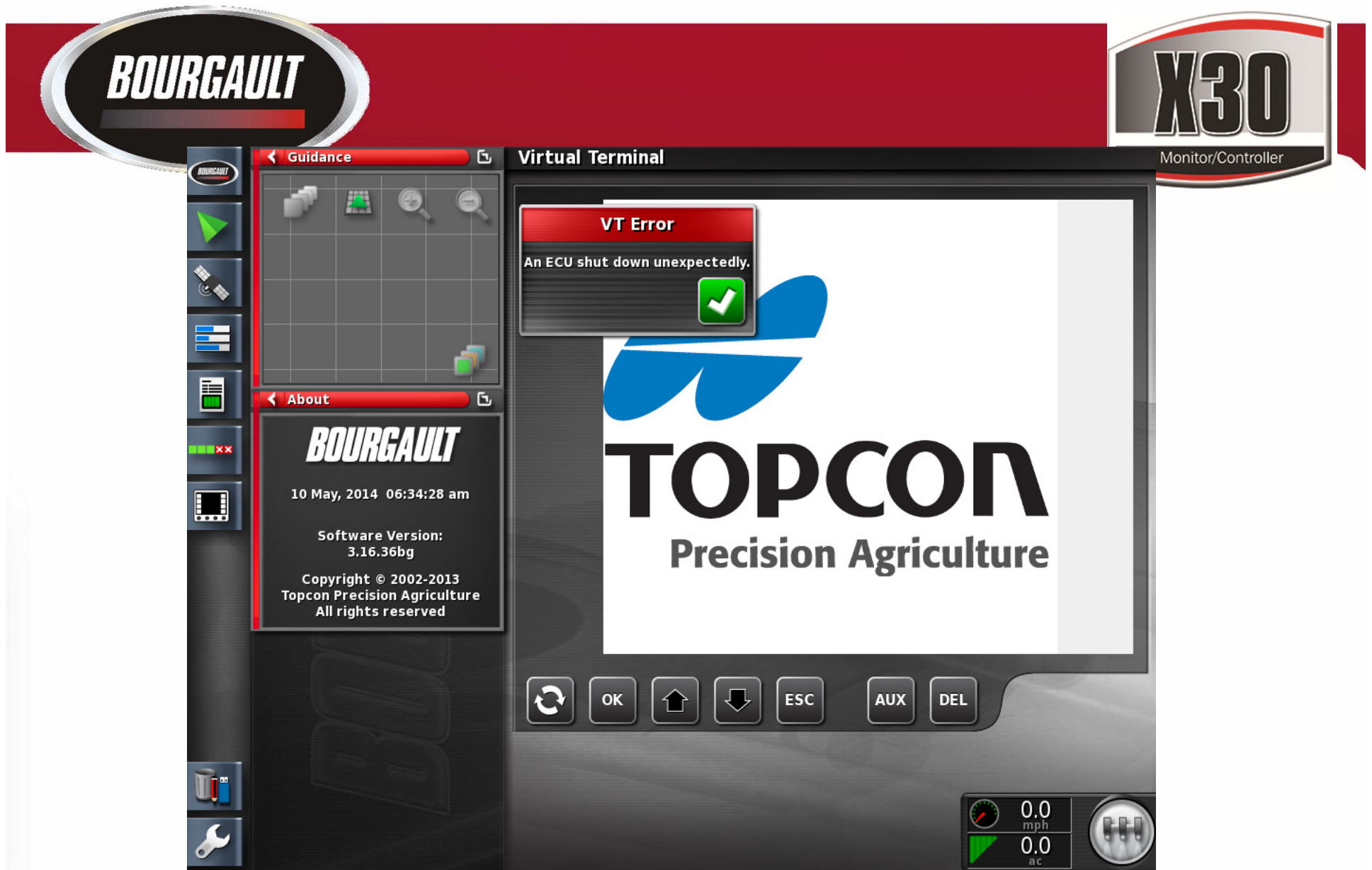
BOURGAULT

X30

Monitor/Controller



Press Confirm



Acknowledge VT Error and procede

BOURGAULT

X30

Monitor/Controller

Steering: DISENGAGED

Select Implement

7950 5TANK-MTRG(SCN)_3320-76 10SPCG

✓ BRIDGE FIX

Select

New

ECU Simulation

Geometry

Section Control

Master Switch

User

System

Vehicle

Implement

Product

Go back into Setup and reselect your implement. Leave the Bridge Fix implement in the profile for future use if necessary.
Disable VT in System / Features / Console