



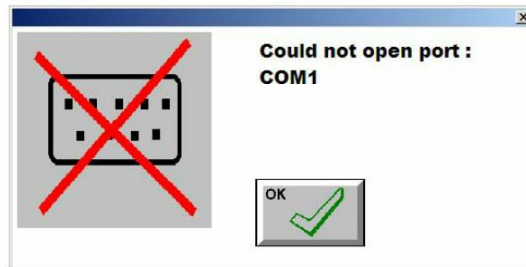
SUBJECT: X20 COM 1 Error

FIX ON FAILURE:

Effective serial number range: X20 monitors with serial numbers greater than A2745100765

BACKGROUND:

Topcon recently made changes to the Guidance software used in X-20 monitors. An oversight has resulted in an error being created when the guidance program is opened. This error results in COM 1 not being able to communicate as well as your path not being “painted” in the guidance program. This results in the guidance program not being able to create a coverage map, then guidance is unable to automatically turn the clutch on or off at headlands etc...



*****IMPORTANT – IF YOU ARE NOT EXPERIENCING THESE SYMPTOMS PLEASE DO NOT INSTALL THIS UPGRADE - AS FURTHER OPERATIONAL PROBLEMS MAY BE ENCOUNTERED.**

CORRECTIVE ACTION:

The following steps are required to resolve this problem:

1. Proceed to the Bourgaault download site to obtain the files required to UPGRADE the X20 monitor. Simply type “download.bourgaault.com “ into any internet search engine ***do not include the www.

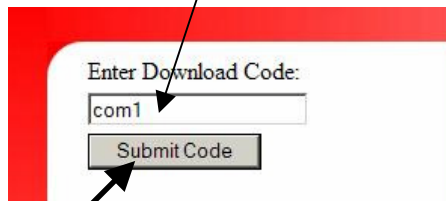


TSB # 14-2011

Page 2 of 7

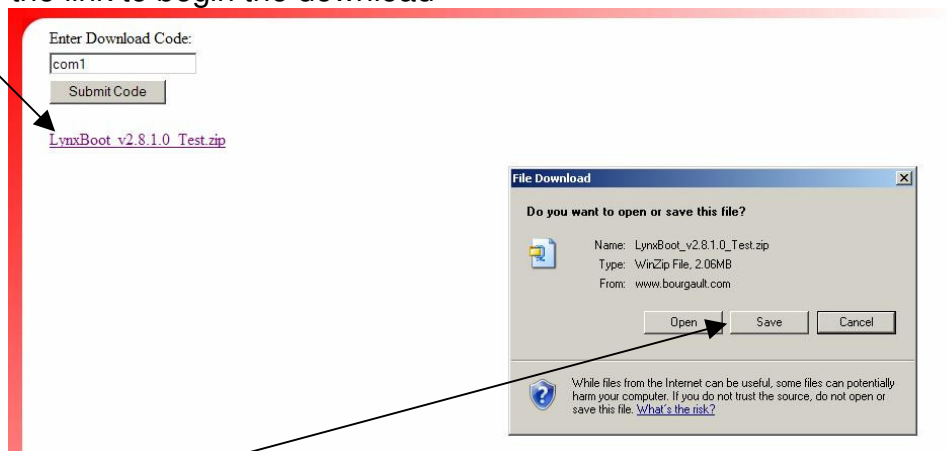
SUBJECT: X20 COM 1 Error

2. Enter the following Download Code – **com1** (small letters no space)

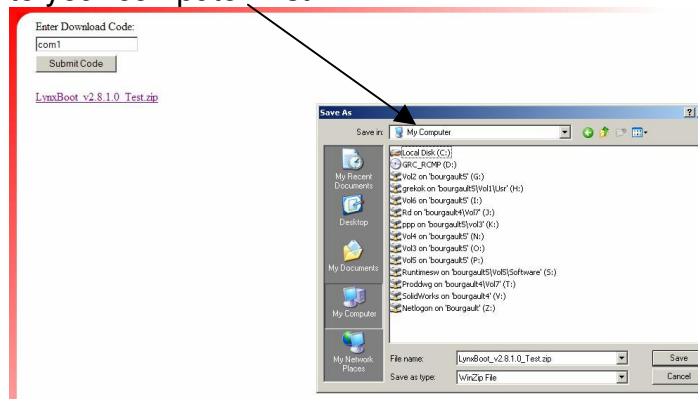


click on the submit code button.

3. Click on the link to begin the download



4. Select “save” and indicate the location you would like the file to be stored. We suggest you save the file to your computer first.

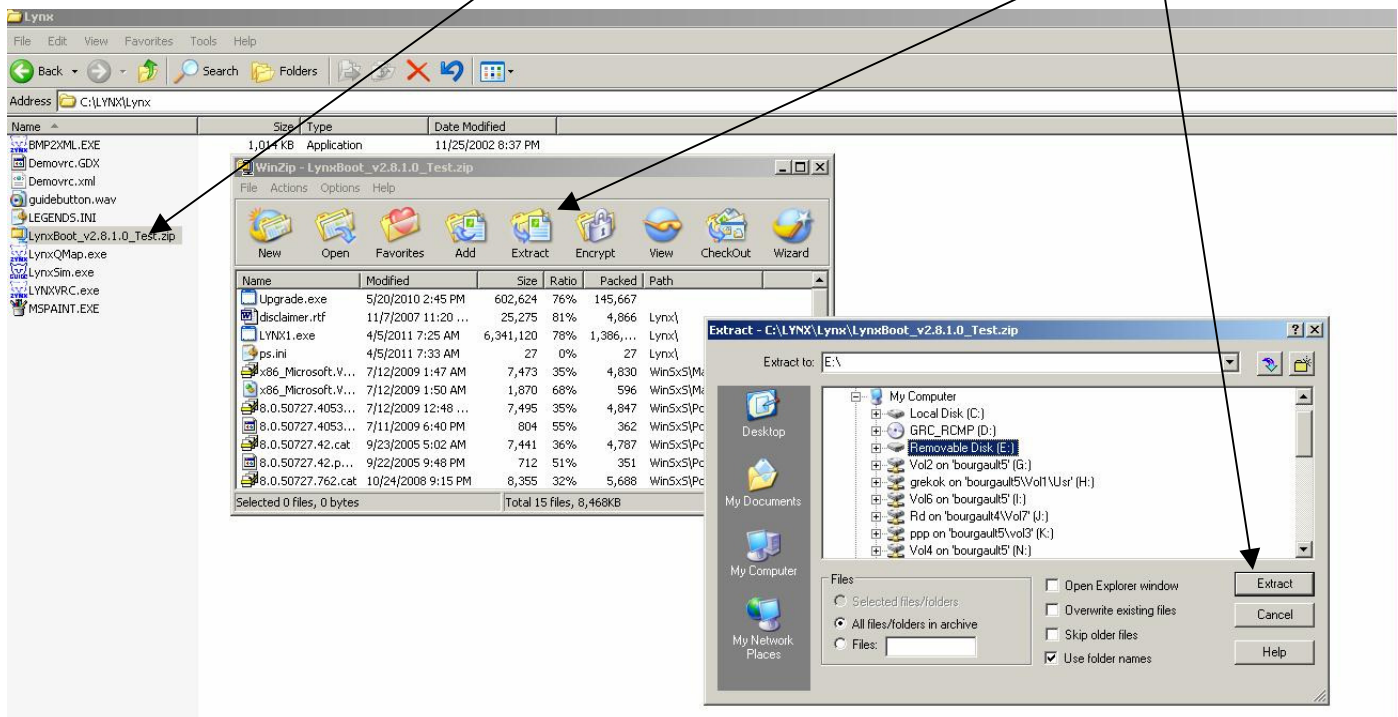


TSB # 14-2011

Page 3 of 7

SUBJECT: X20 COM 1 Error

5. Transfer the file to a blank thumbdrive for UPGRADING the X20 by going to the location the file is stored and select the file LynxBoot_v2.8.1.0_testzip. Use the EXTRACT function to transfer the required files to a blank thumbdrive



6. Print a copy of the Upgrade Instructions (this bulletin) to reference when performing the Upgrade.

7. Perform the steps shown on the following pages and verify a successful Upgrade.

SRC SETTINGS BACK-UP: The upgrade should not overwrite the SRC configuration files, but to ensure your settings are backed-up please do the following:

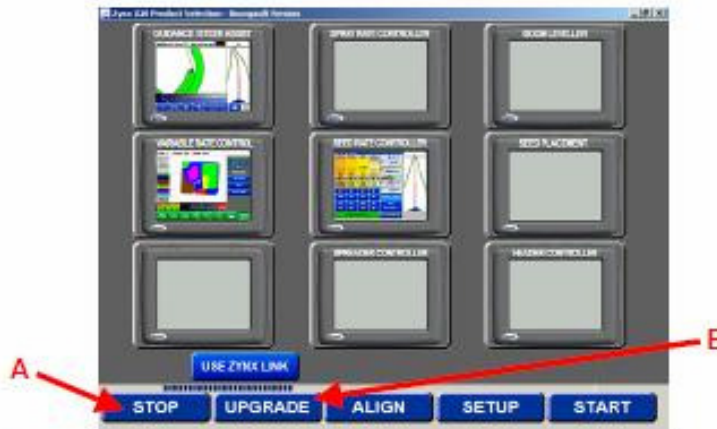
- (1) Using Windows Explorer go to "C:\Lynx\Programs\LYNXSRC\" and copy two files - SRC.INI and SRCRUN.INI – either to a separate thumbdrive or to the desktop.
- (2) If an overwrite does occur during the upgrade, just overwrite the back-up files into the directory listed above.

TSB # 14-2011

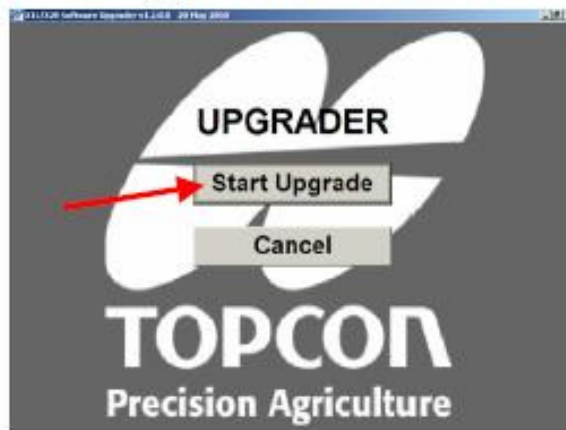
Page 4 of 7

SUBJECT: X20 COM 1 Error

STEP 1: Upon starting, the X20 'Product Selector' screen will be displayed. Select the 'STOP' button. Insert the thumb-drive with the provided files into one of the USB ports and then select the 'UPGRADE' button.



STEP 2: Select the 'Start Upgrade' button from the 'UPGRADER' screen.



STEP 3: You will be given a series of prompts similar to the below to confirm files / folders being overwritten by the upgrade program; please select 'Yes to All' for each window.

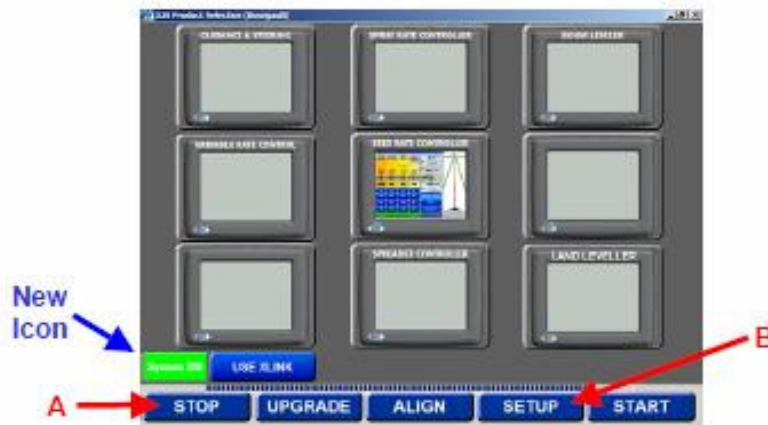


TSB # 14-2011

Page 5 of 7

SUBJECT: X20 COM 1 Error

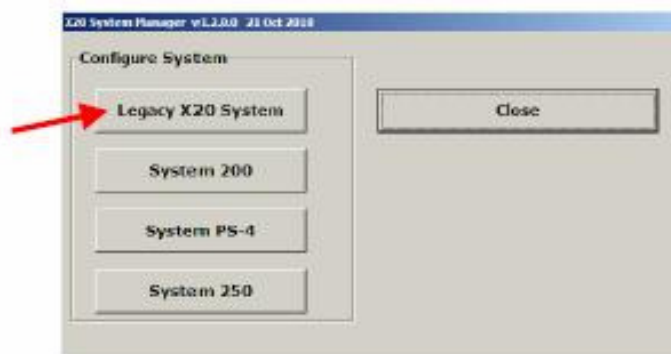
STEP 4: Once the upgrader has completed, the X20 'Product Selector' screen will be automatically displayed again. Select the 'STOP' button and then select the 'SETUP' button. You should notice a new icon in the lower left-hand corner of the screen.



STEP 5: Select the 'System' button.



STEP 6: Select the 'Legacy X20 System' button.

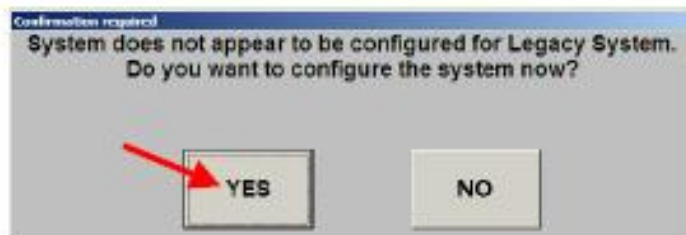


TSB # 14-2011

Page 6 of 7

SUBJECT: X20 COM 1 Error

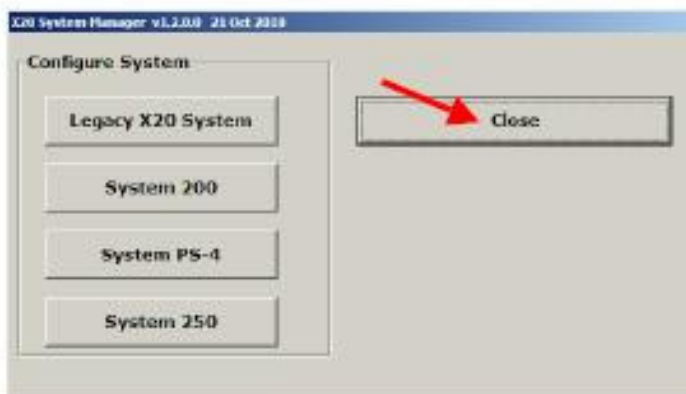
STEP 7: You will be prompted to confirm the selection of a 'Legacy System'; please select 'YES'.



STEP 8: You will be prompted that the configuration has been successful; please select 'OK'.



STEP 9: Close the 'X20 System Manager' window.

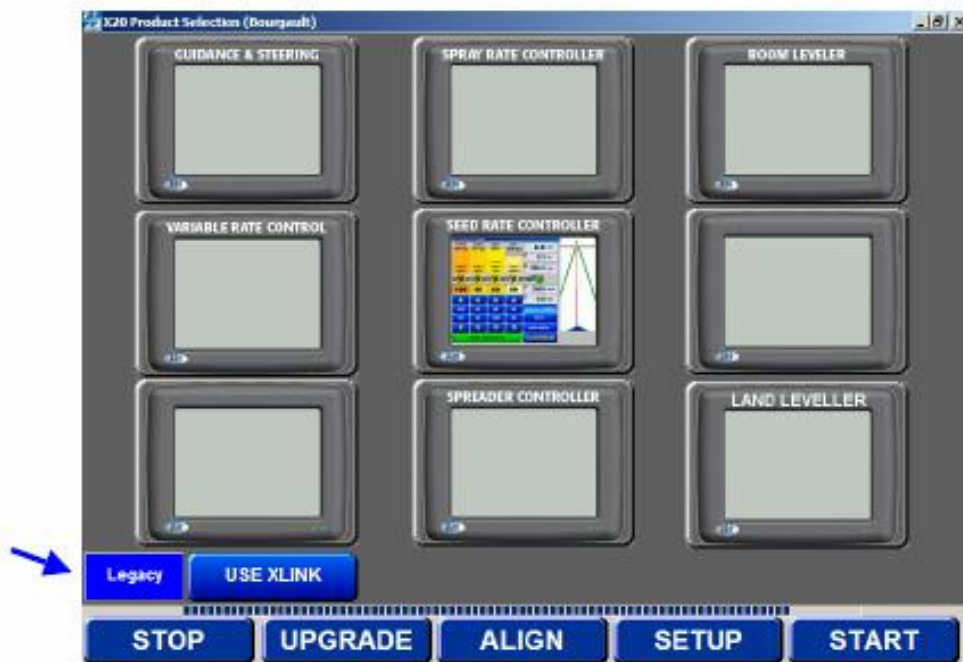


TSB # 14-2011

Page 7 of 7

SUBJECT: X20 COM 1 Error

STEP 10: To confirm a successful upgrade, the X20 'Product Selector' screen will now have a blue 'Legacy' icon in the lower left-hand corner.



STEP 11: Close out of everything and reboot the X20.

STEP 12: Select the required applications in the 'Product Selector' and launch the X20 software. Configure the Guidance, Maplink, and SRC as instructed in the manuals.