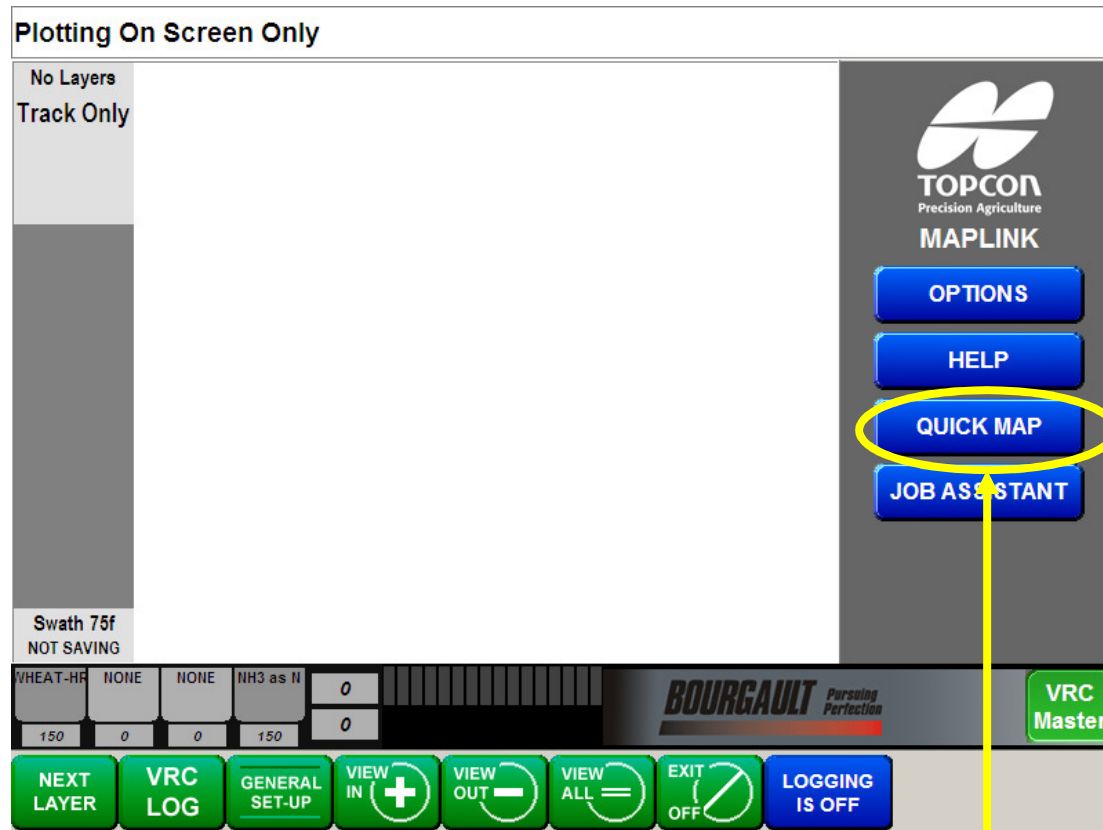


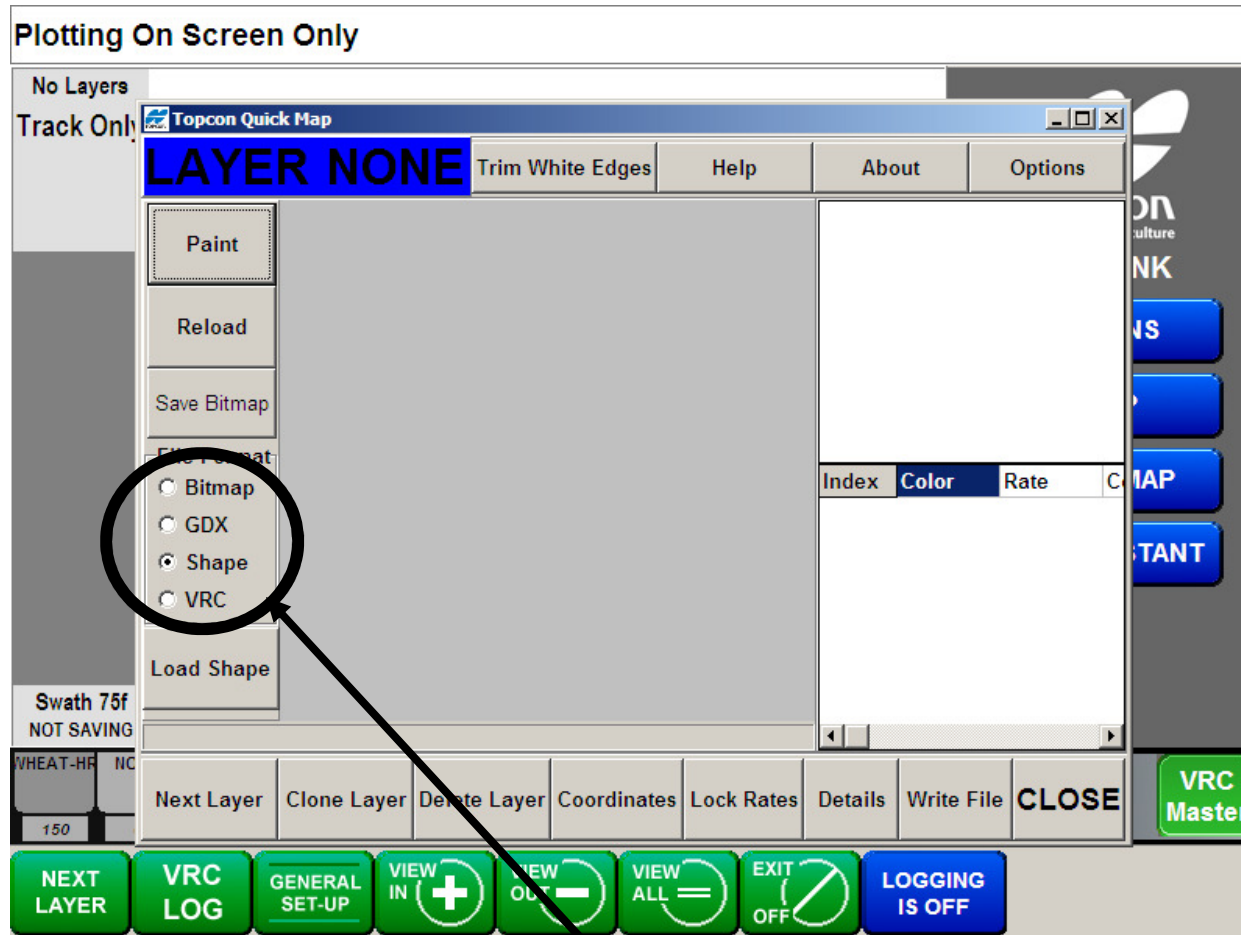
# Converting a Shape File

(shape files must be converted into a file in a format that the X20 can use)



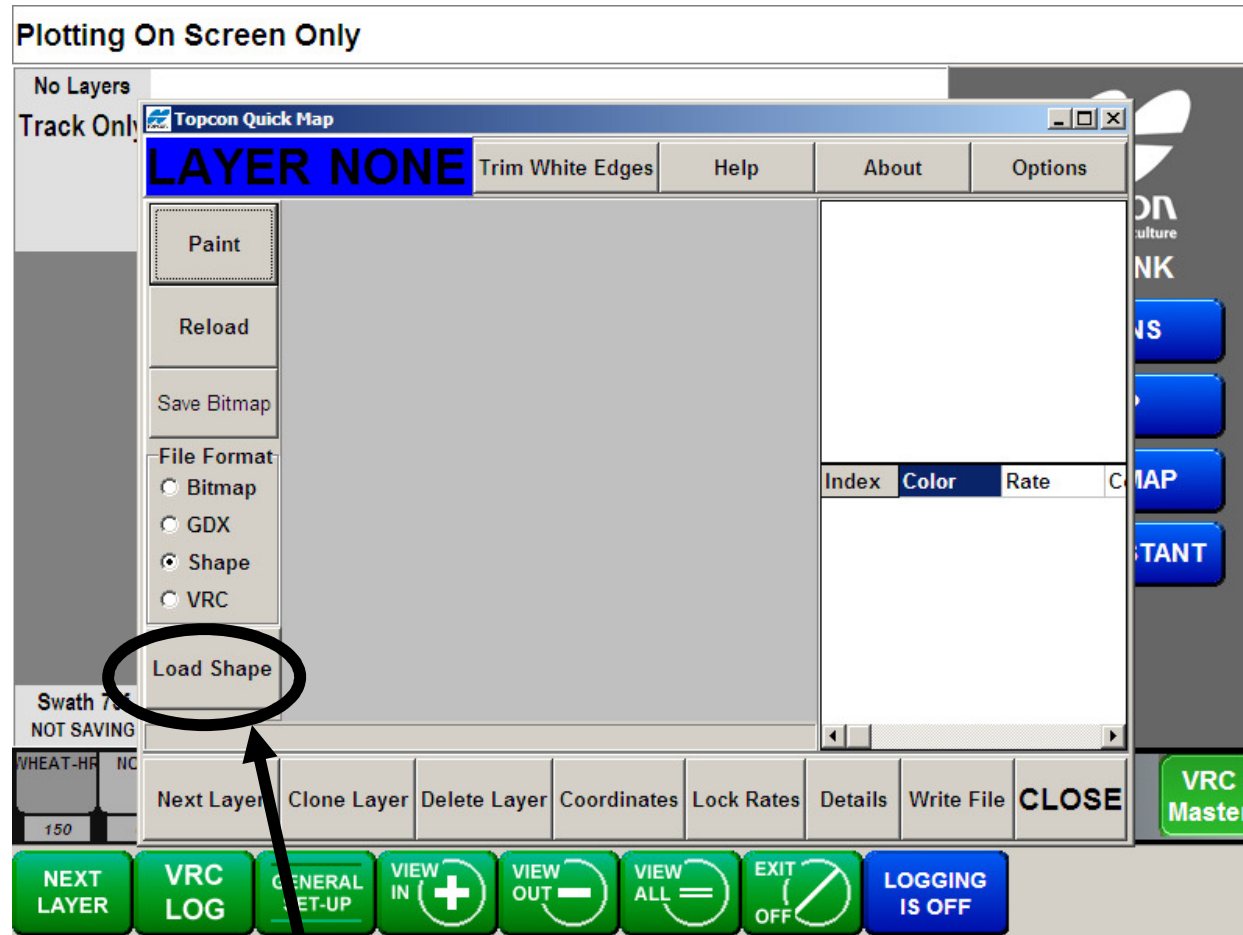
First step is to enter the QUICK MAP program

# Converting a Shape File



You can convert Bitmap, GDX or Shape files to VRC files

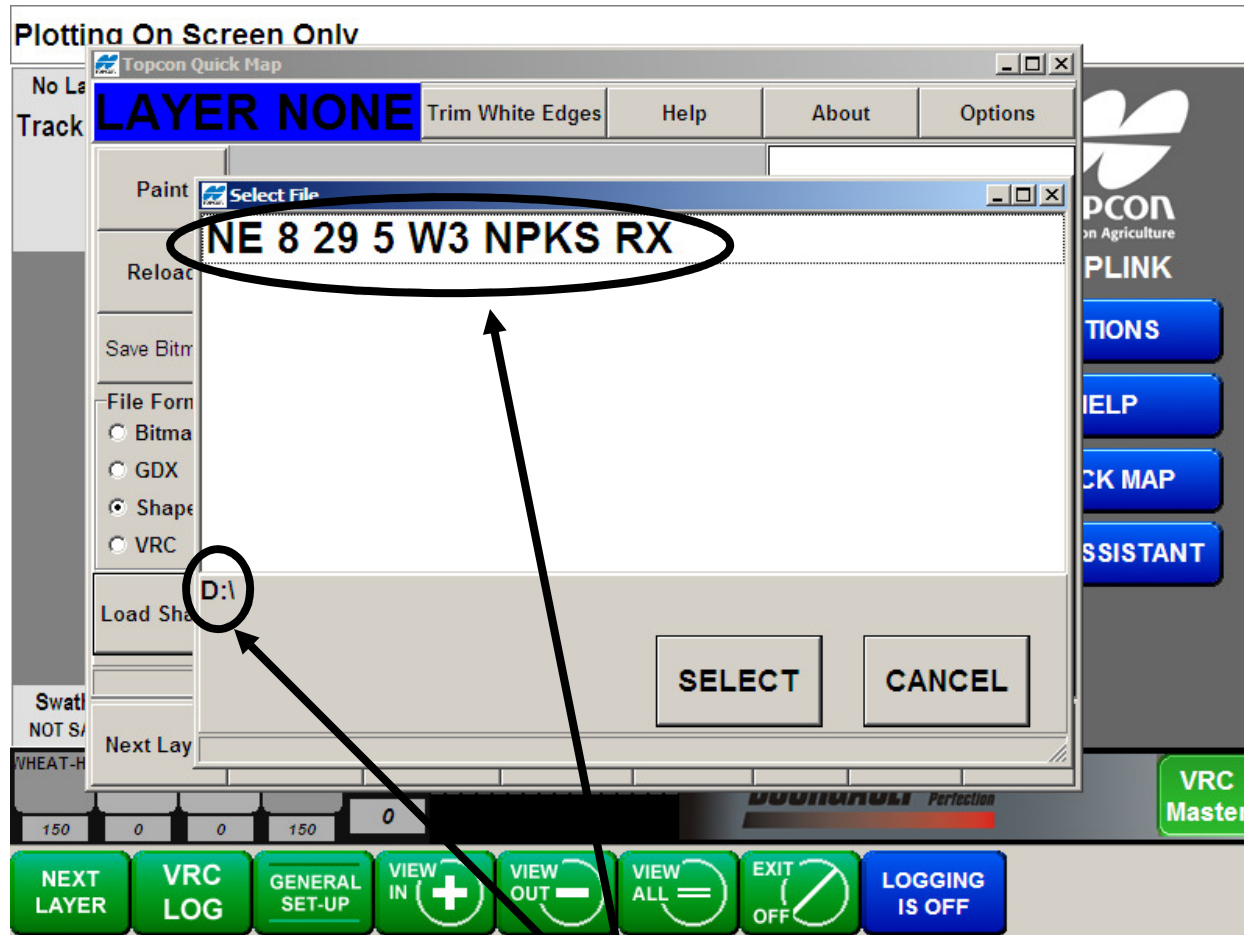
# Converting a Shape File



Shape is a common format for maps.

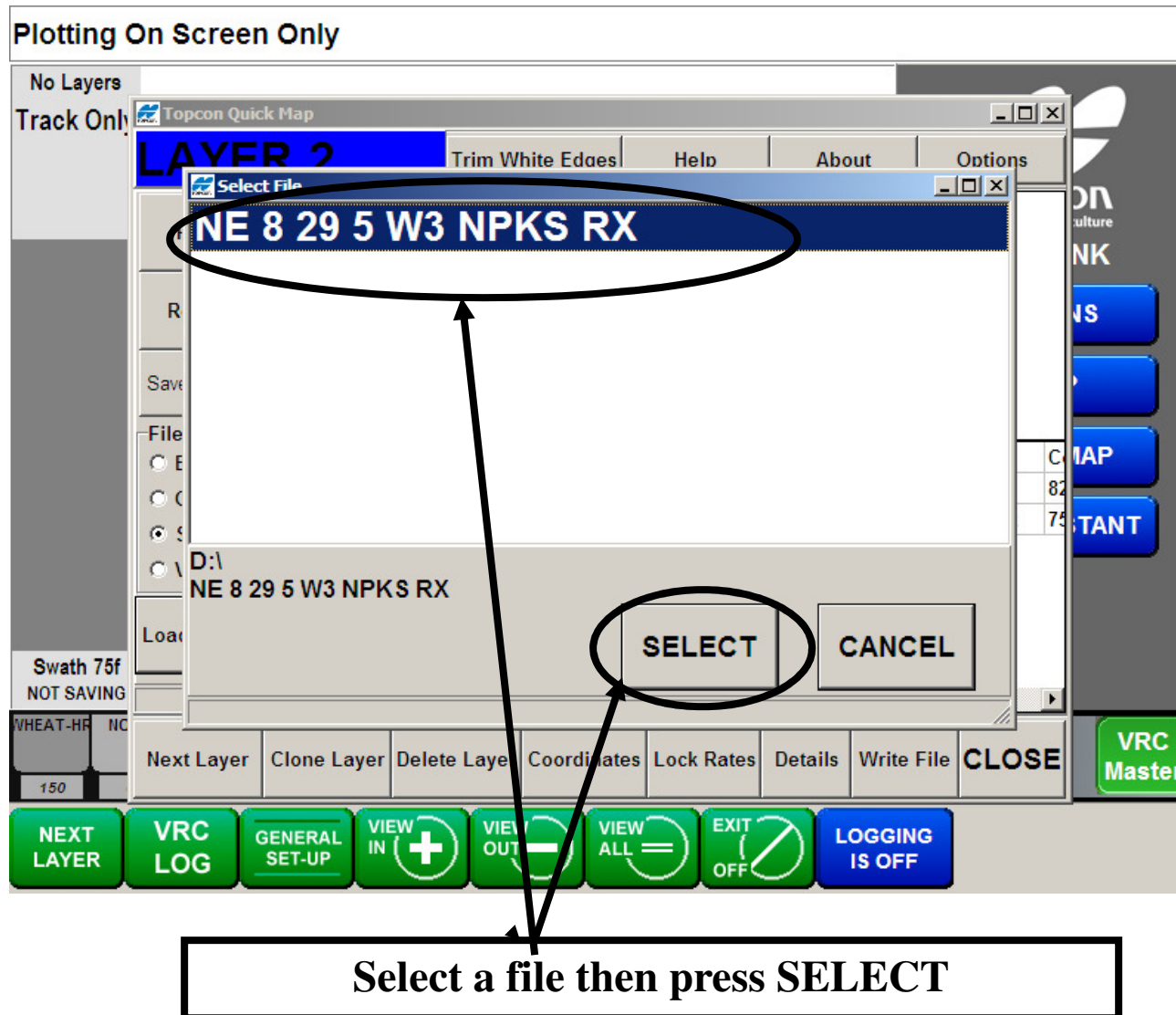
Press Load Shape to start the conversion process.

# Converting a Shape File

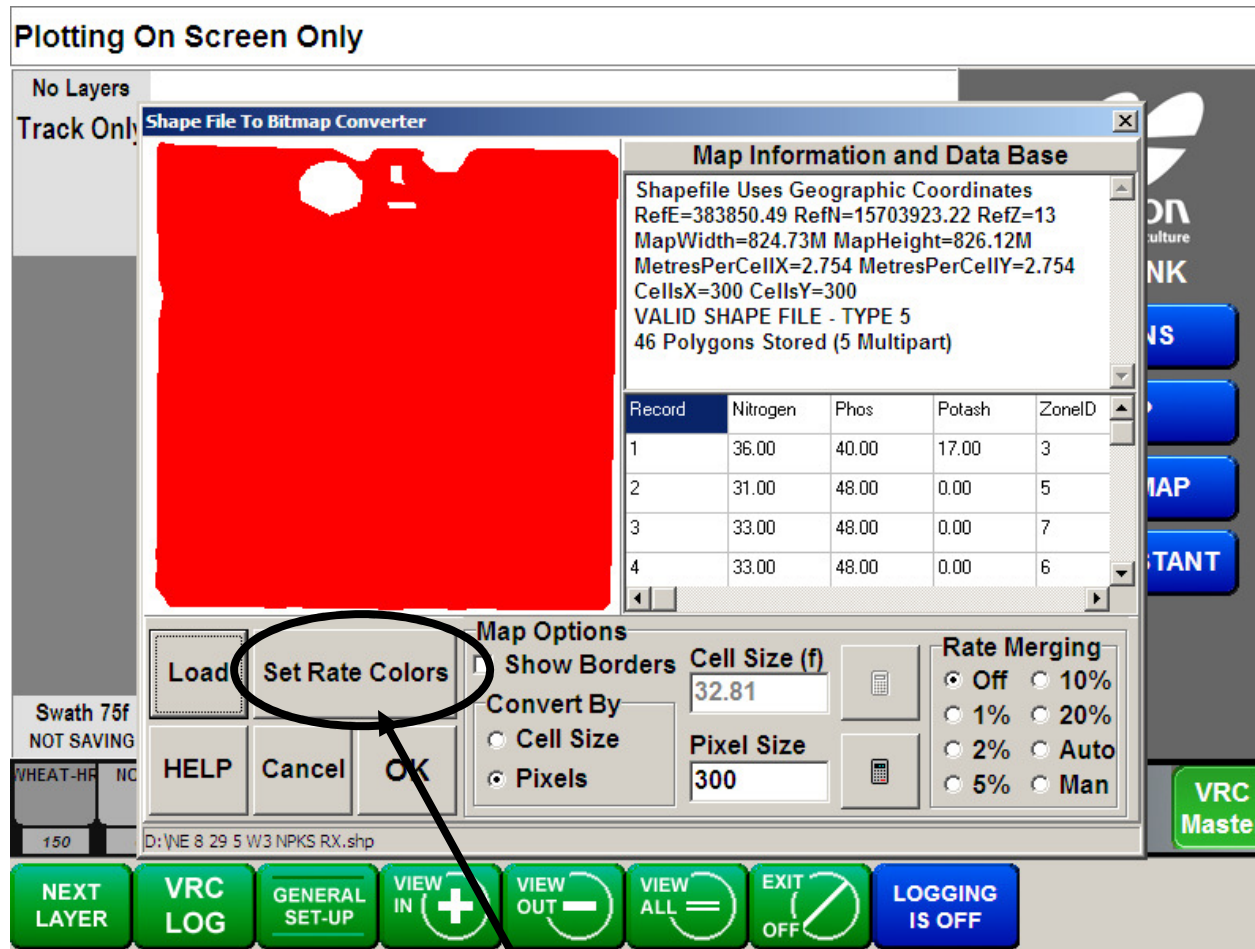


Shape files loaded on D:\ drive  
(D:\ is normally the USB memory stick)

# Converting a Shape File

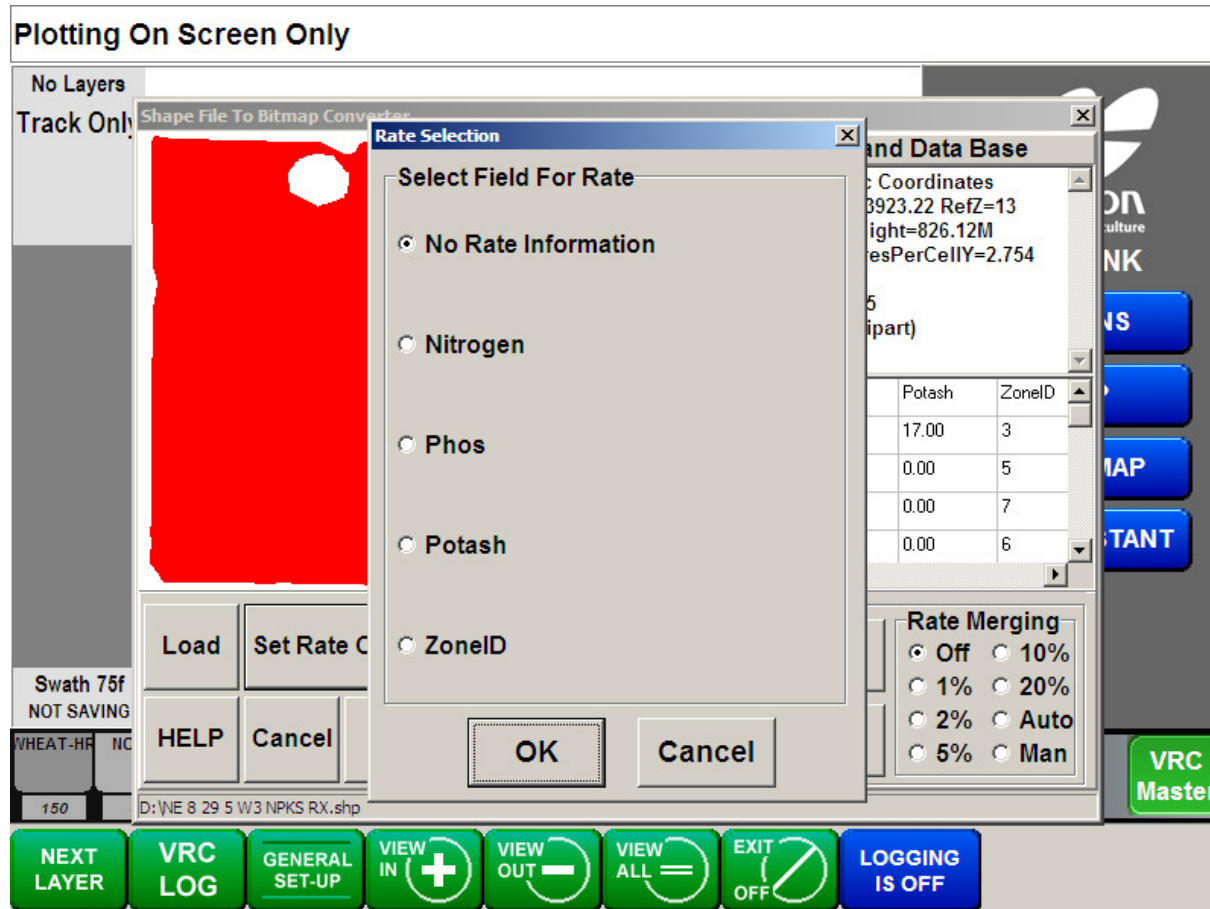


# Converting a Shape File



Press Set Rate Colors to set up your first layer  
which will correspond with tank #1

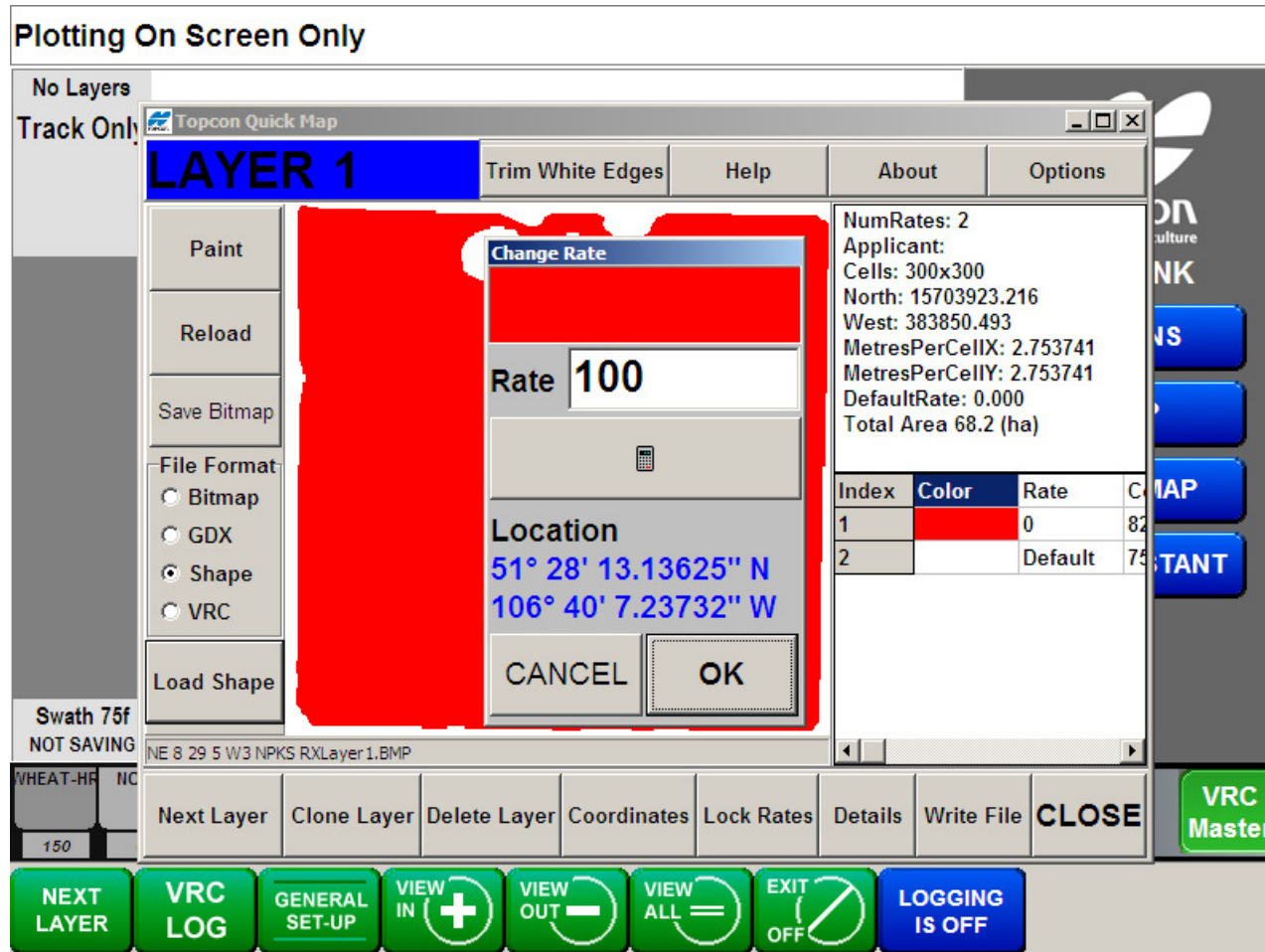
# Converting a Shape File



**You will have to select the product for each layer which corresponds to the tank of your air seeder. No Rate Information would normally be your seed tank.**



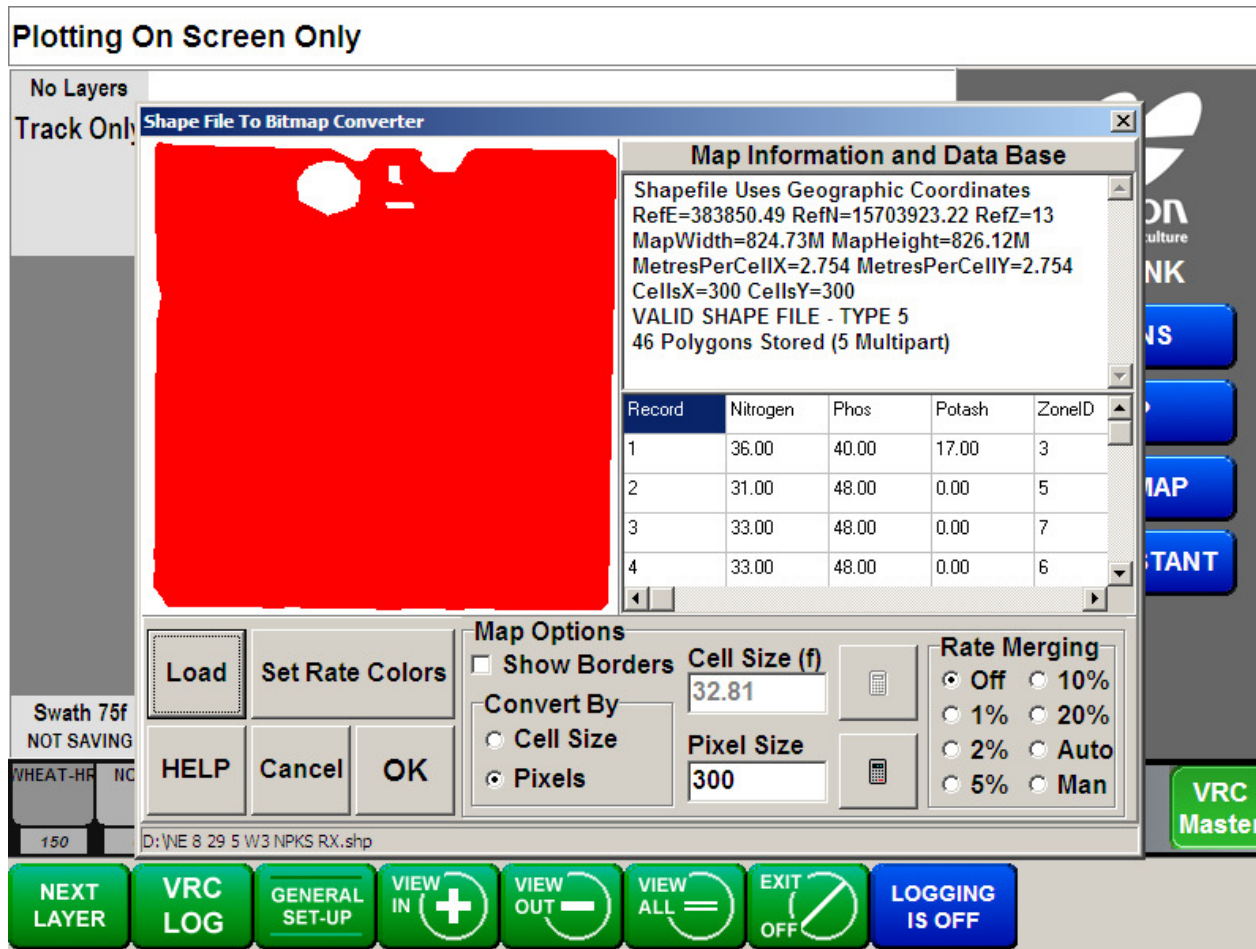
# Converting a Shape File



Touch anywhere in the red area to enter your seed rate if you have seed in tank #1, we have entered 100

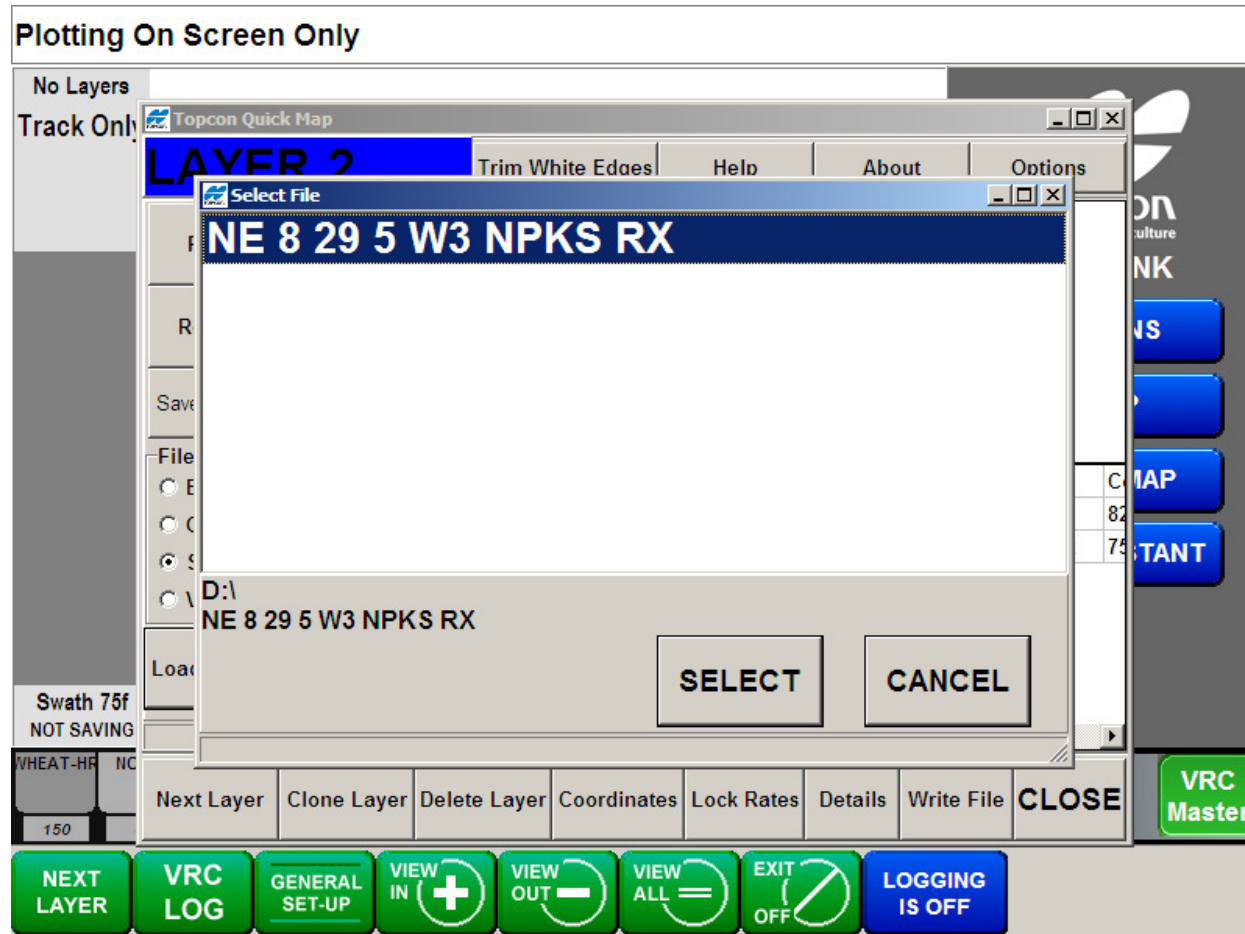


# Converting a Shape File



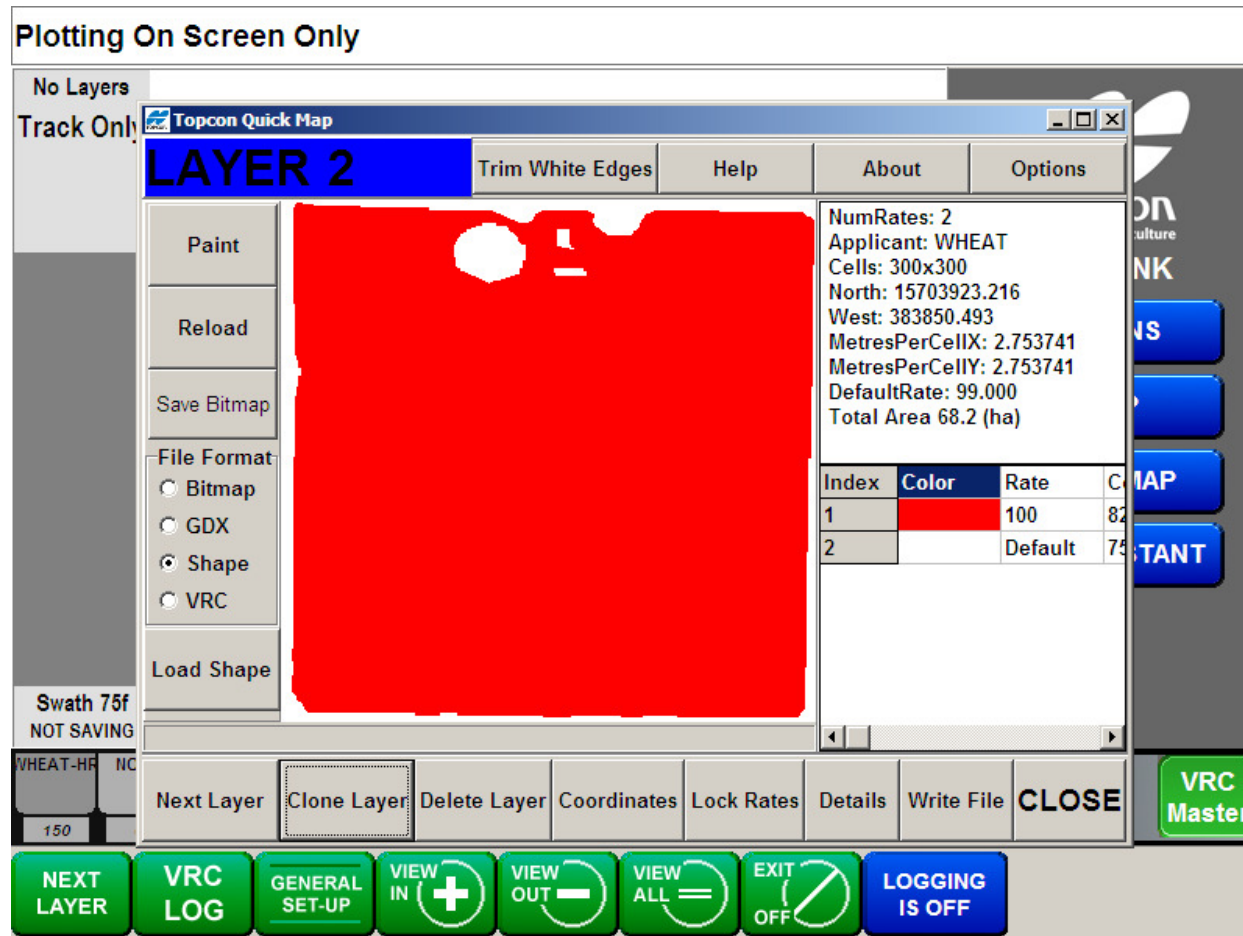
Press Load again to set up the second layer (tank 2)

# Converting a Shape File



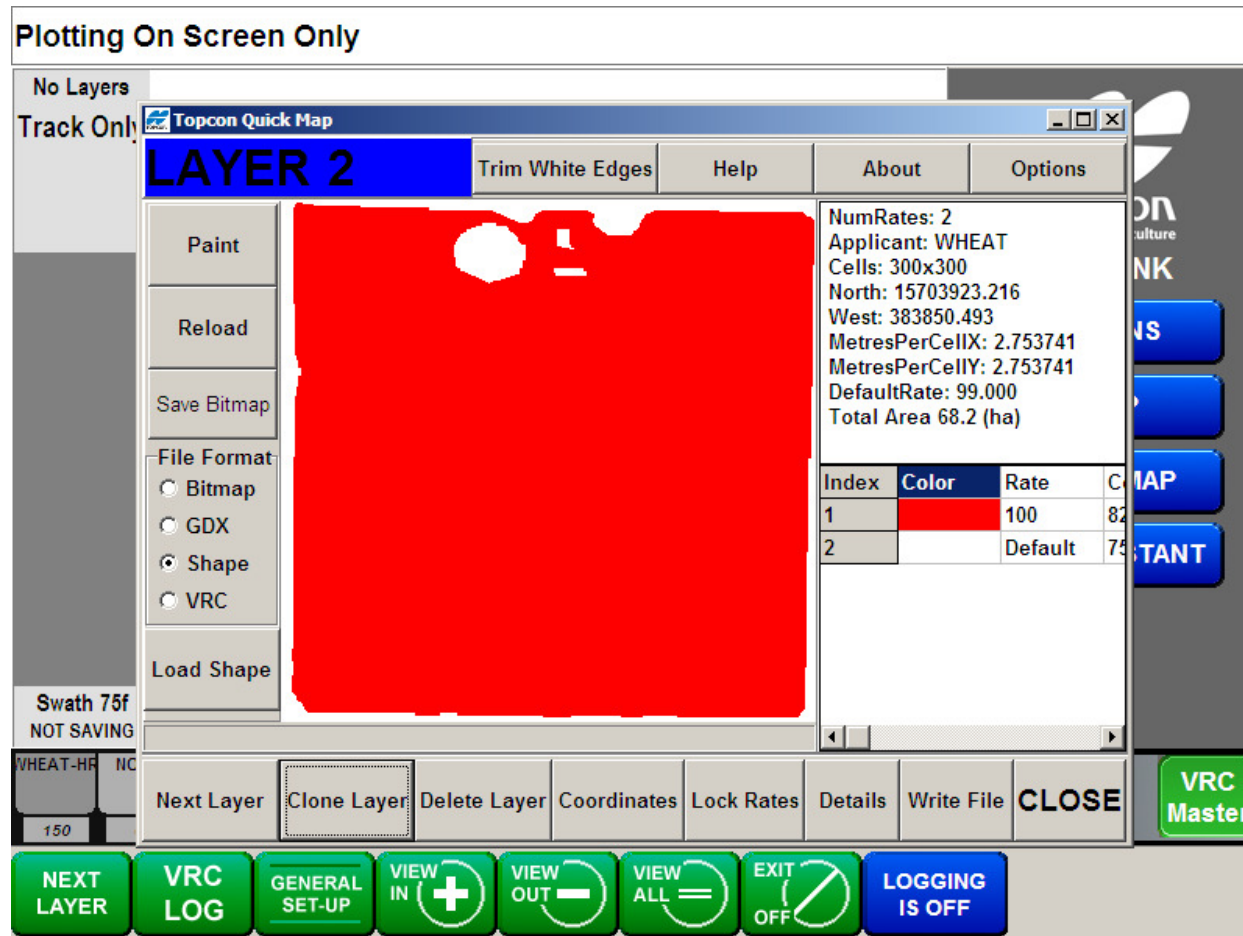
**You will have to repeat the process of selecting the map and picking the product for each tank that has product in it. If you are not using all of the tanks you must enter Cloned Layers.**

# Converting a Shape File



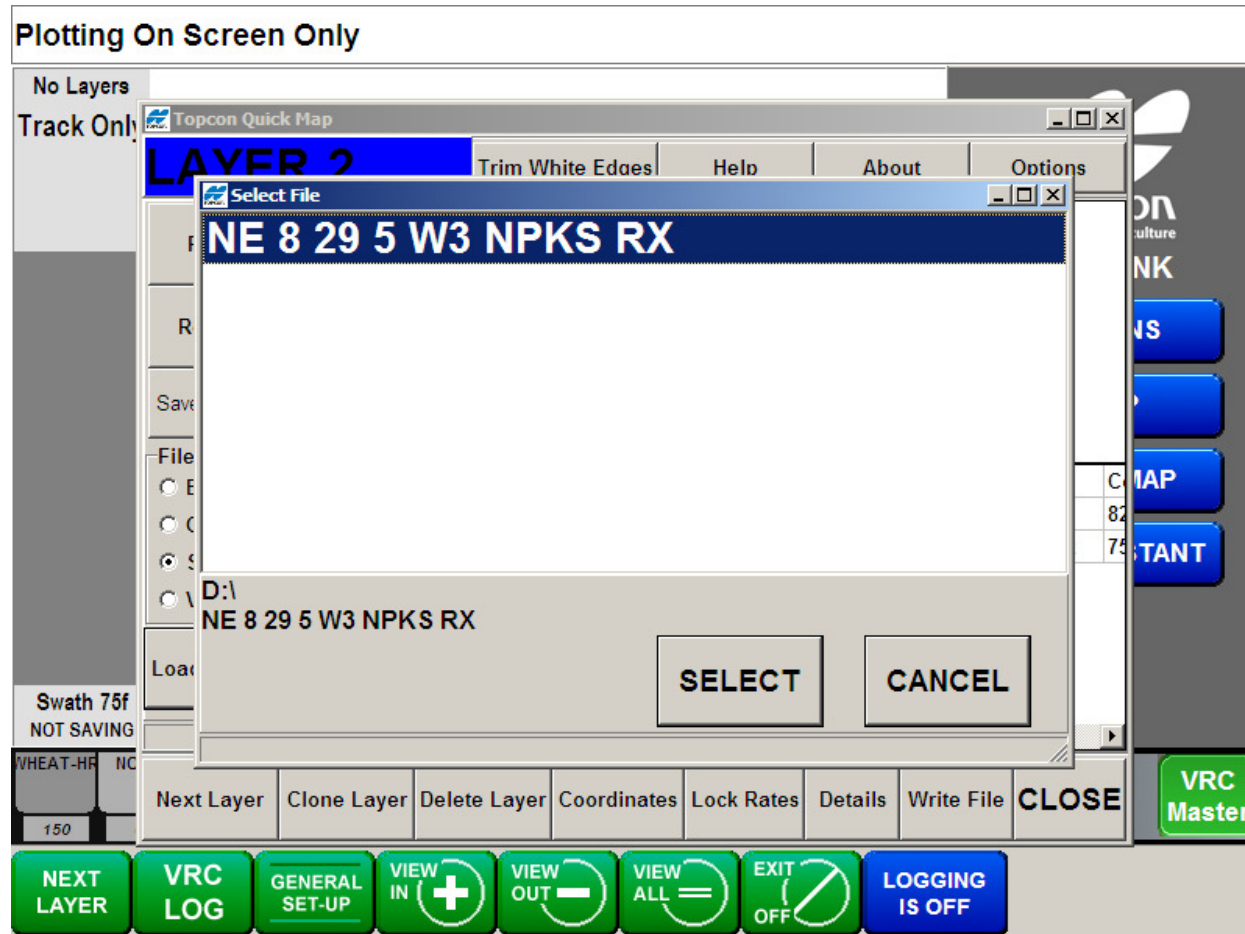
Duplicate Layer for tank 2 which will not be metering product

# Converting a Shape File



**Press Load Shape again to enter Layer 3  
and so on till all of the layers are set up**

# Converting a Shape File



Select the file again to set up the next layer

# Converting a Shape File

Plotting On Screen Only

No Layers  
Track Only

Shape File To Bitmap Converter

Rate Selection

11	45	45
12	45	42
13	45	35
14	45	38
15	45	39
16	36	17
17	36	33
18	36	0
19	35	13
20	35	23

Load Set Rate  
HELP Cancel  
Cancel OK

7 Unique Rates Found

End Data Base

Coordinates  
23.22 RefZ=13  
ght=826.12M  
sPerCellY=2.754

Potash ZonID  
17.00 3  
0.00 5  
0.00 7  
0.00 6

Rate Merging  
☒ Off ☐ 10%  
☐ 1% ☐ 20%  
☐ 2% ☐ Auto  
☐ 5% ☐ Man

Swath 75f  
NOT SAVING  
VHEAT-HR NC  
150  
D:\NE 8 29 5 W3 NPKS RX.shp

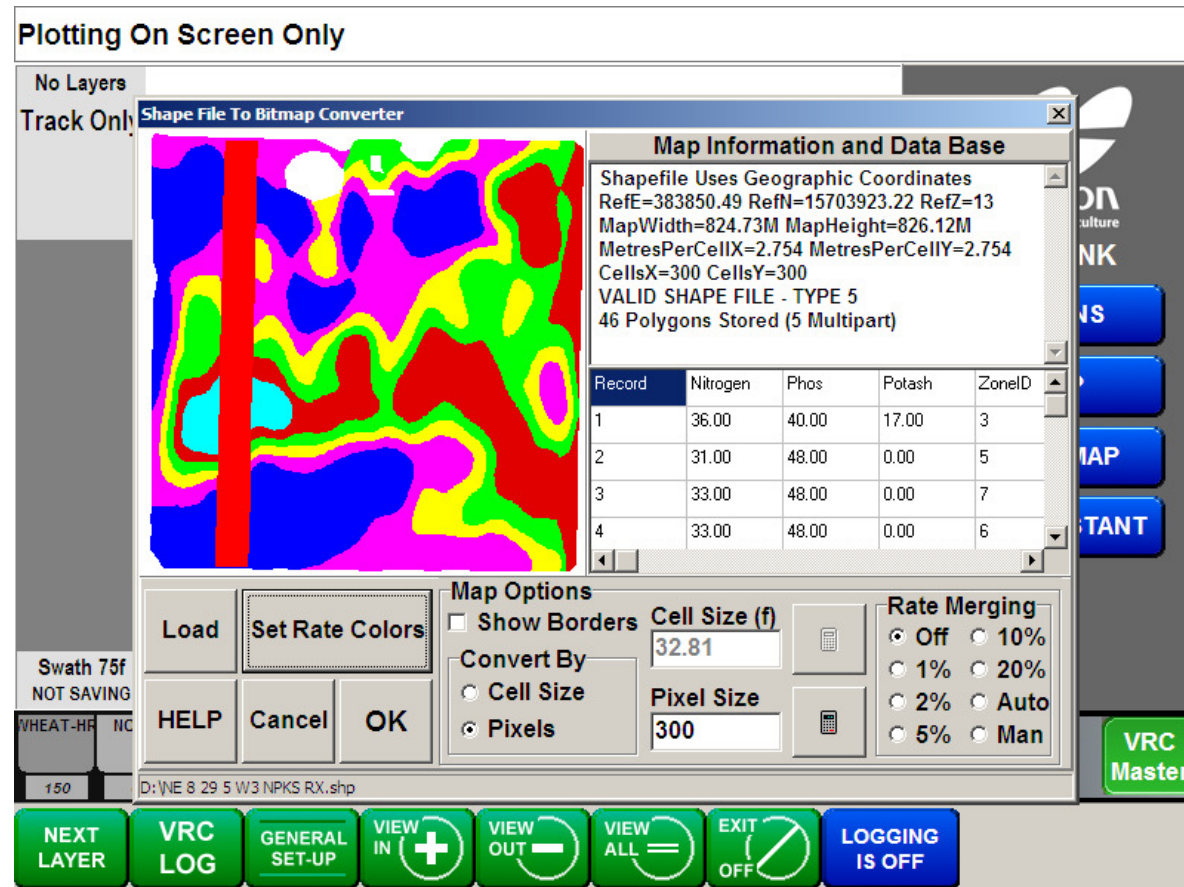
VRC Master

NEXT LAYER VRC LOG GENERAL SET-UP VIEW IN + VIEW OUT - VIEW ALL = EXIT OFF LOGGING IS OFF

Some of the Layers will have various colors that correspond to the different rates for a product.

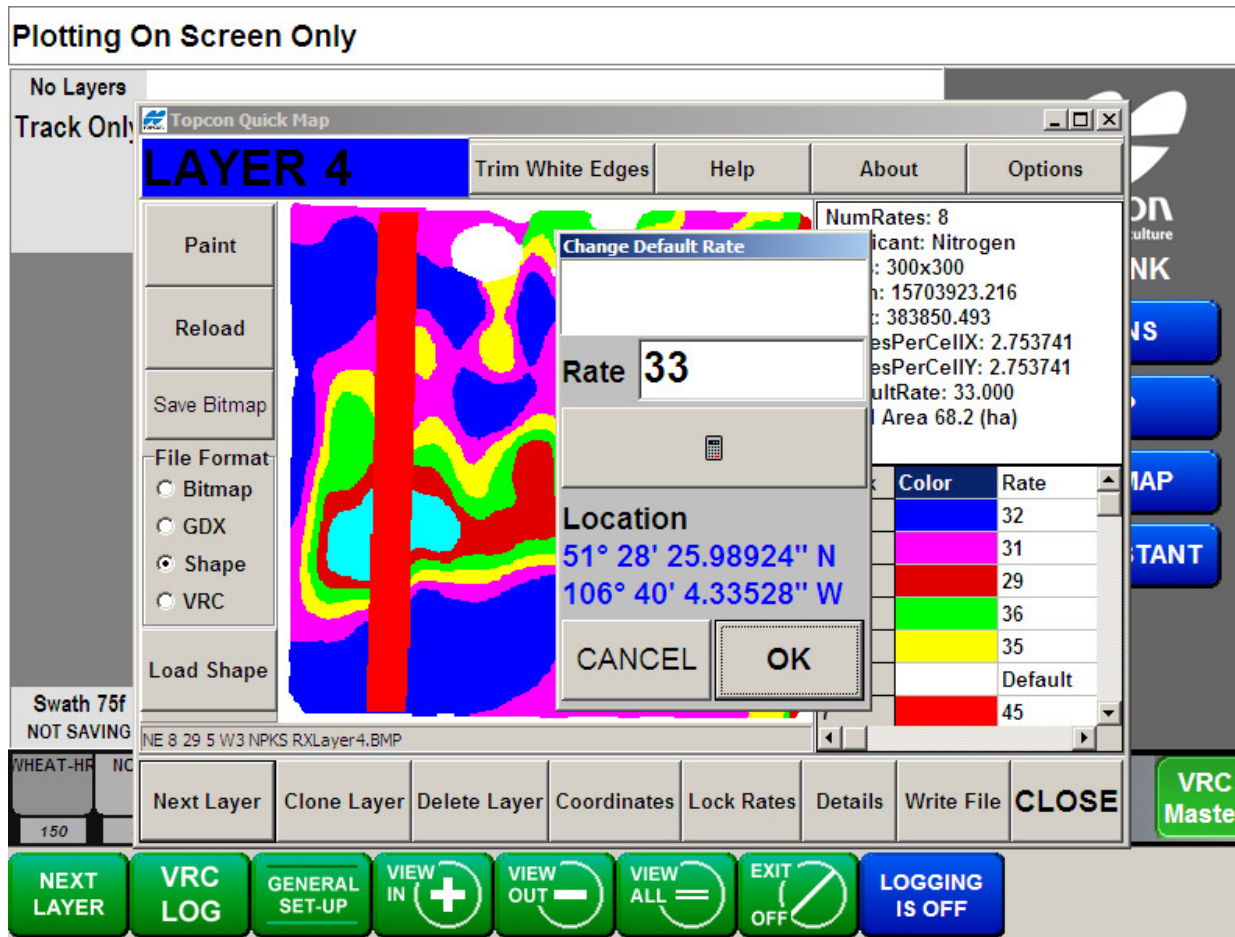


# Converting a Shape File



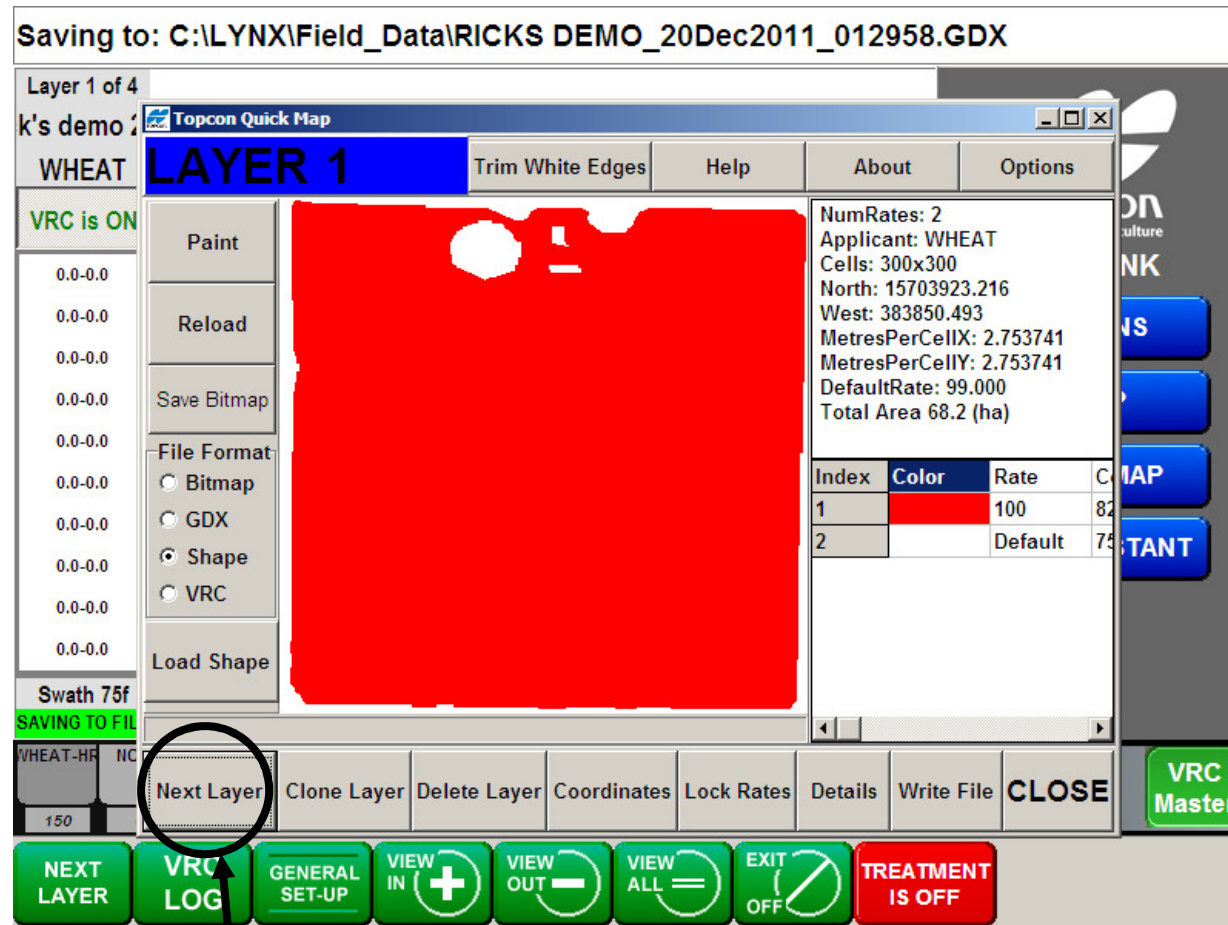
**This map has a test strip across all layers to help determine the performance of the VRC Map**

# Converting a Shape File



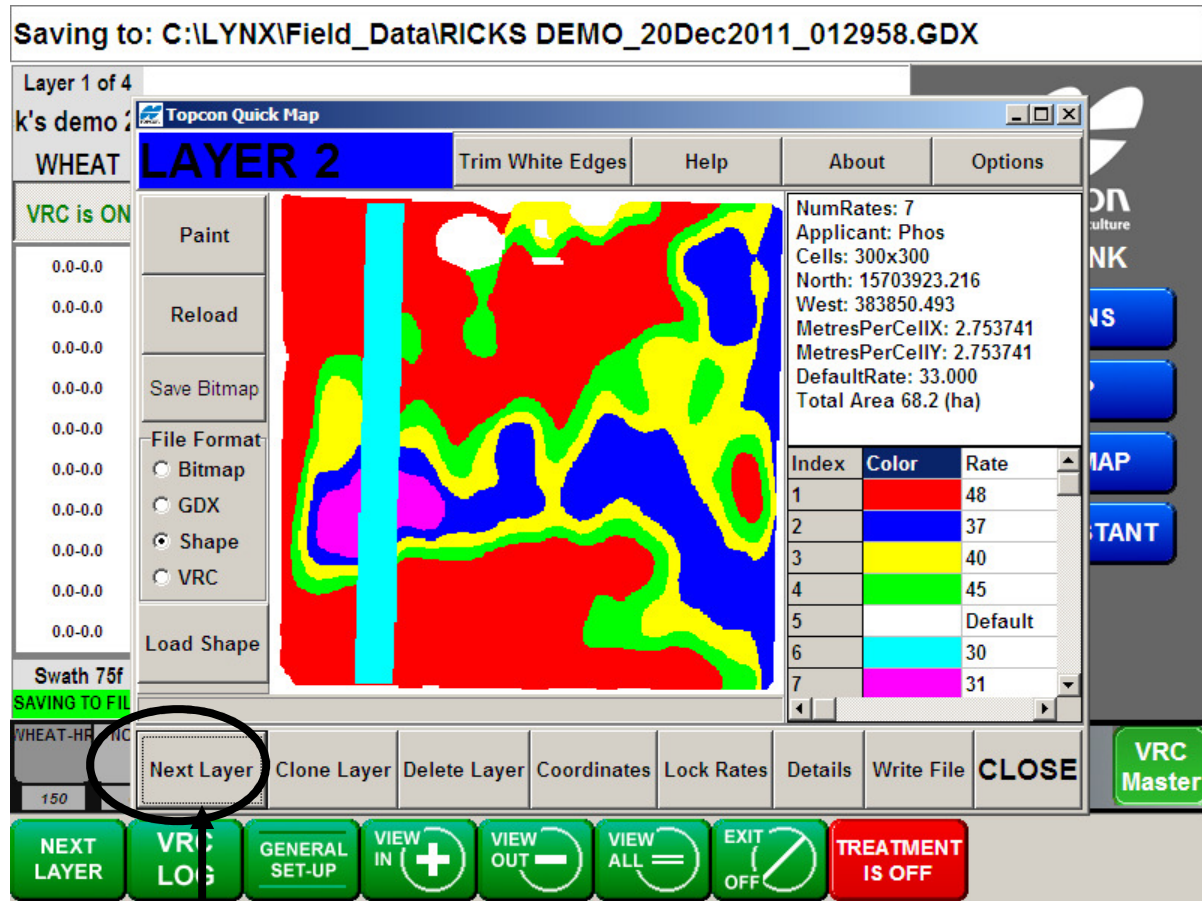
The White zones of a map would correspond to the unseeded areas or areas outside the zone. It is a good practice to enter a Default rate that you would be happy with if you lost GPS signal

# Converting a Shape File



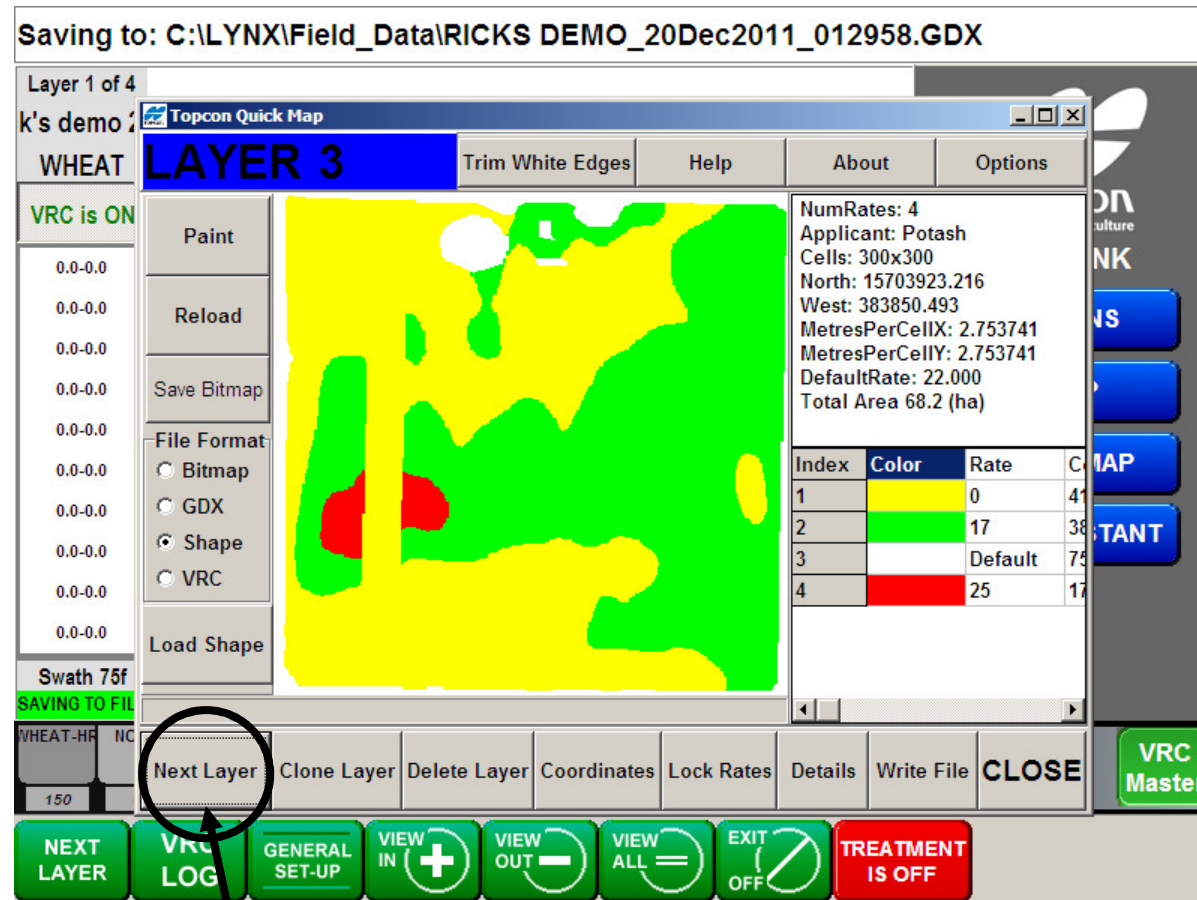
Once you have all of your layers in you should cycle through all of the Layers to make sure they are correctly entered

# Converting a Shape File



Once you have all of your layers in you should cycle through all of the Layers to make sure they are correctly entered

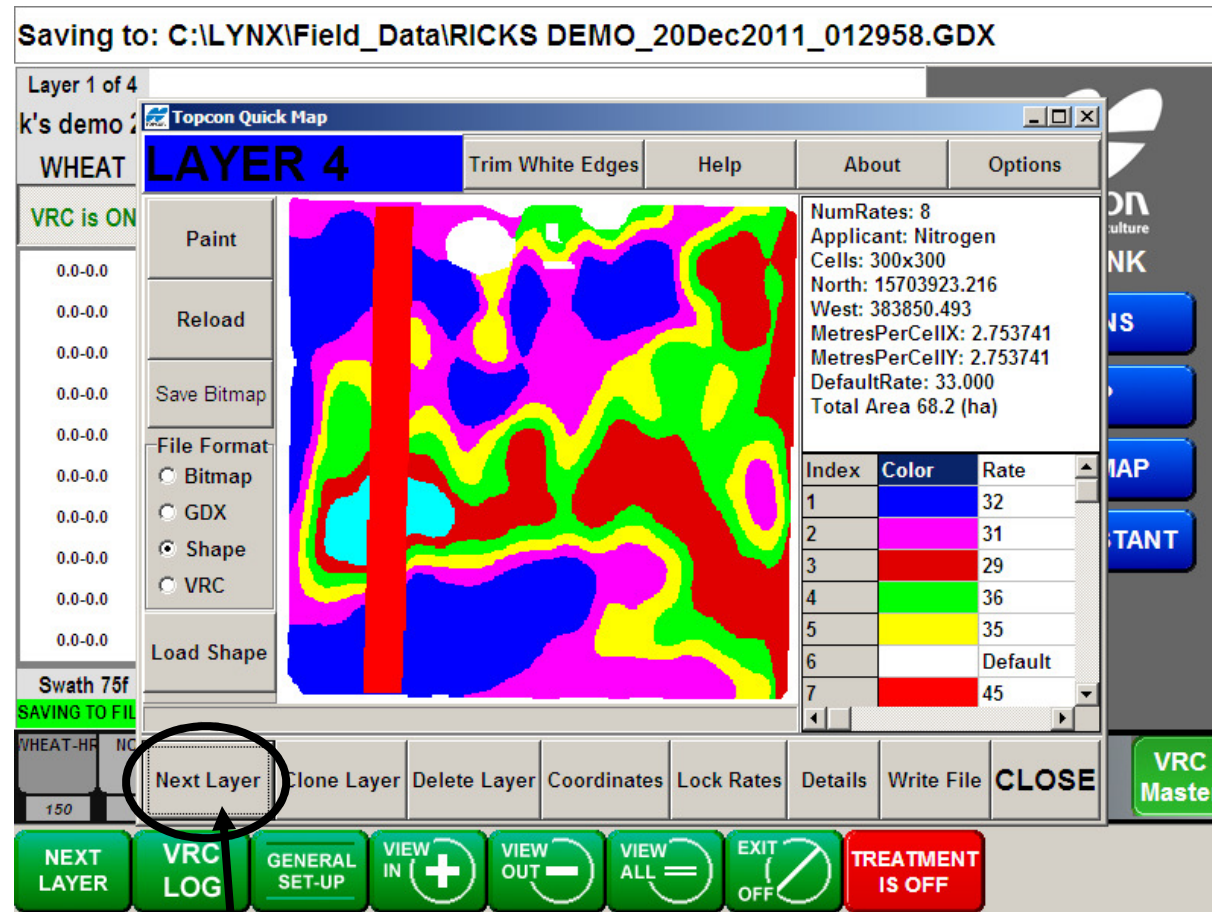
# Converting a Shape File



Once you have all of your layers in you should cycle through all of the Layers to make sure they are correctly entered



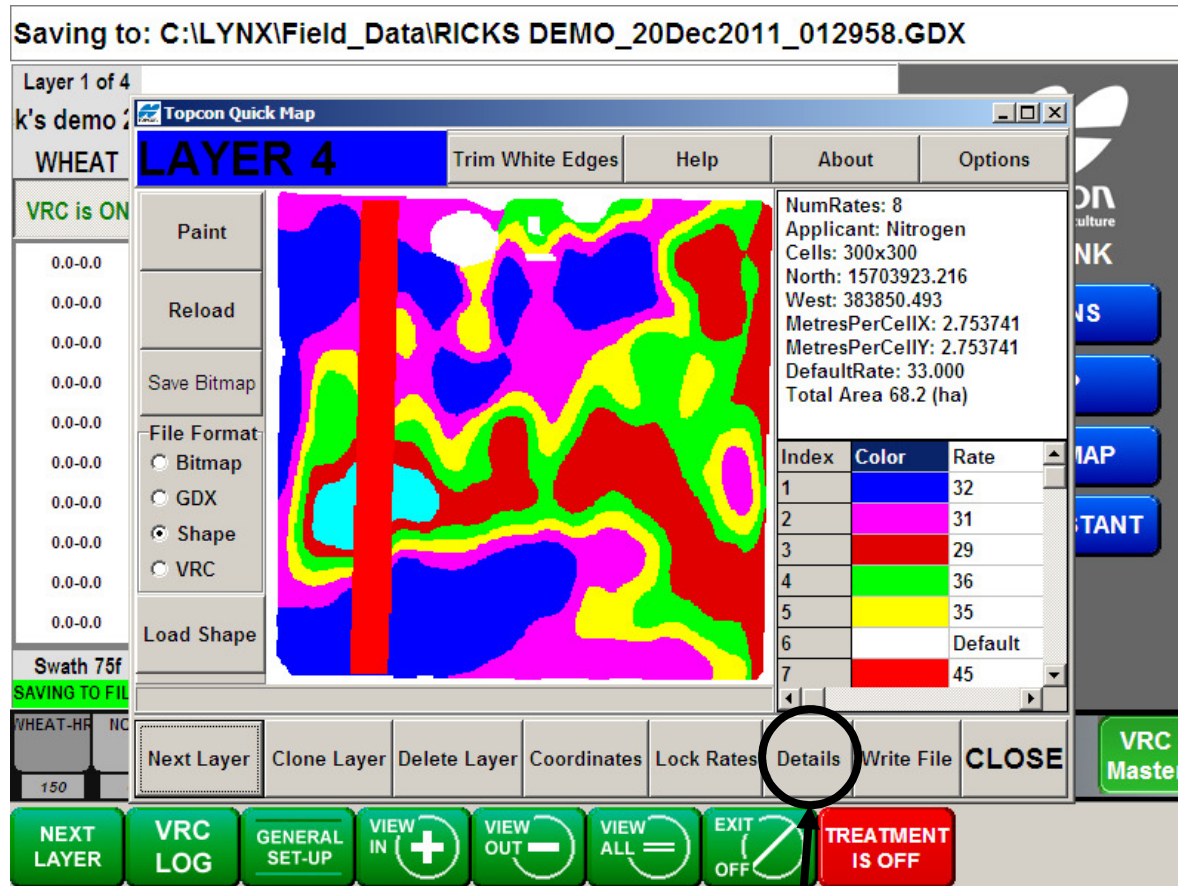
# Converting a Shape File



Once you have all of your layers in you should cycle through all of the Layers to make sure they are correctly entered



# Converting a Shape File



At some point you should press the Details tab to enter some map details

# Converting a Shape File

Plotting On Screen Only

No Layers

Track Only

Topcon Quick Map

VRC Details

Layer 1 Details

Name  
Rick's demo 2012

Applicant  
WHEAT

Default Rate  
99

Map Details - Same for all layers

Creator  
RICK

Customer Name  
CUSTOMER

Farm Name  
XYZ INC

Field Name  
RICKS HOME QUARTER

Note  
2012 DEMO

HELP CANCEL ACCEPT

Swath 75f  
NOT SAVING

WHEAT-HR

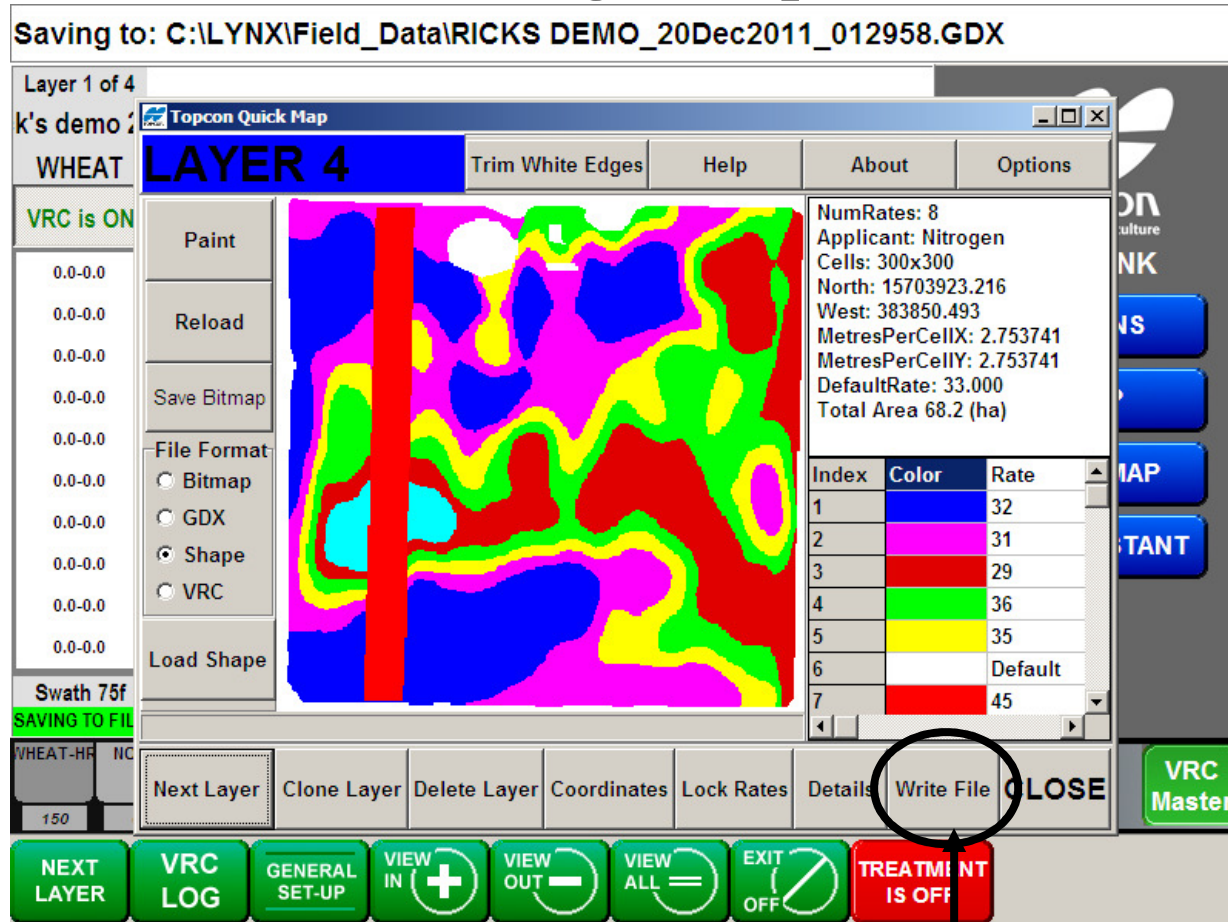
150

NEXT LAYER VRC LOG GENERAL SET-UP VIEW IN (+) VIEW OUT (-) VIEW ALL (=) EXIT (X) OFF LOGGING IS OFF

VRC Master

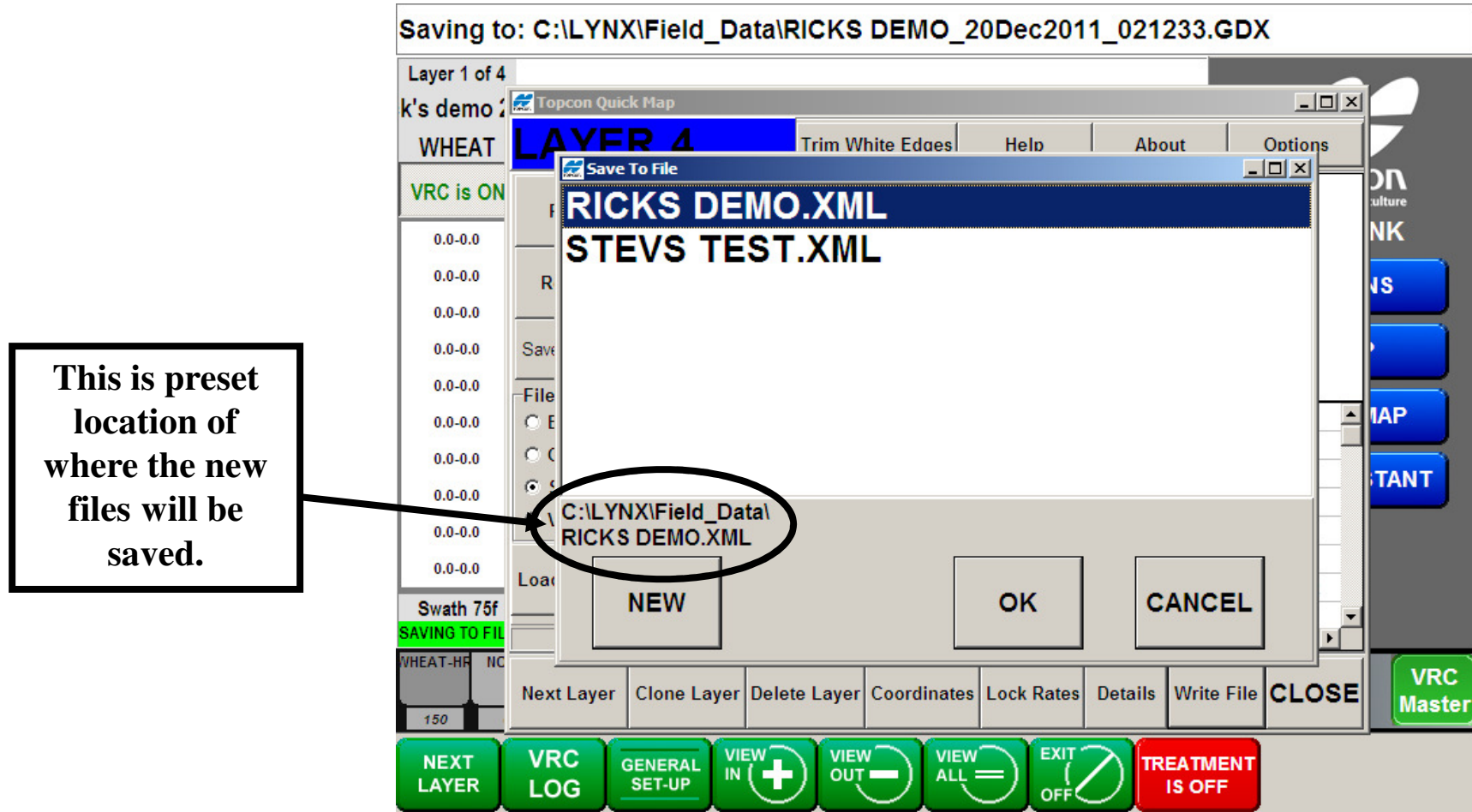
Enter your Map details, the details on the right will carry forward for all of the layers.

# Converting a Shape File



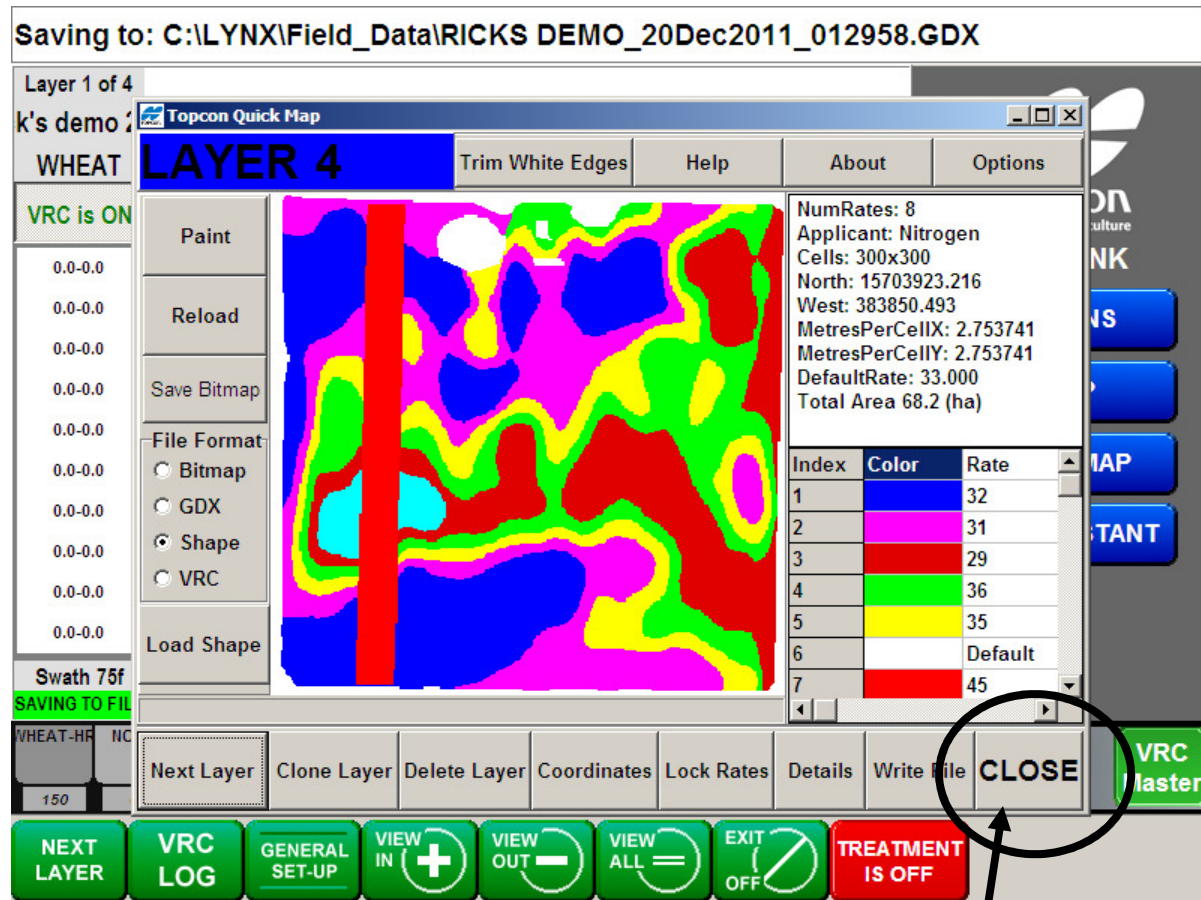
Now you will have to click on Write File to save your converted files

# Converting a Shape File



You can overwrite an existing file or create a new file then press OK

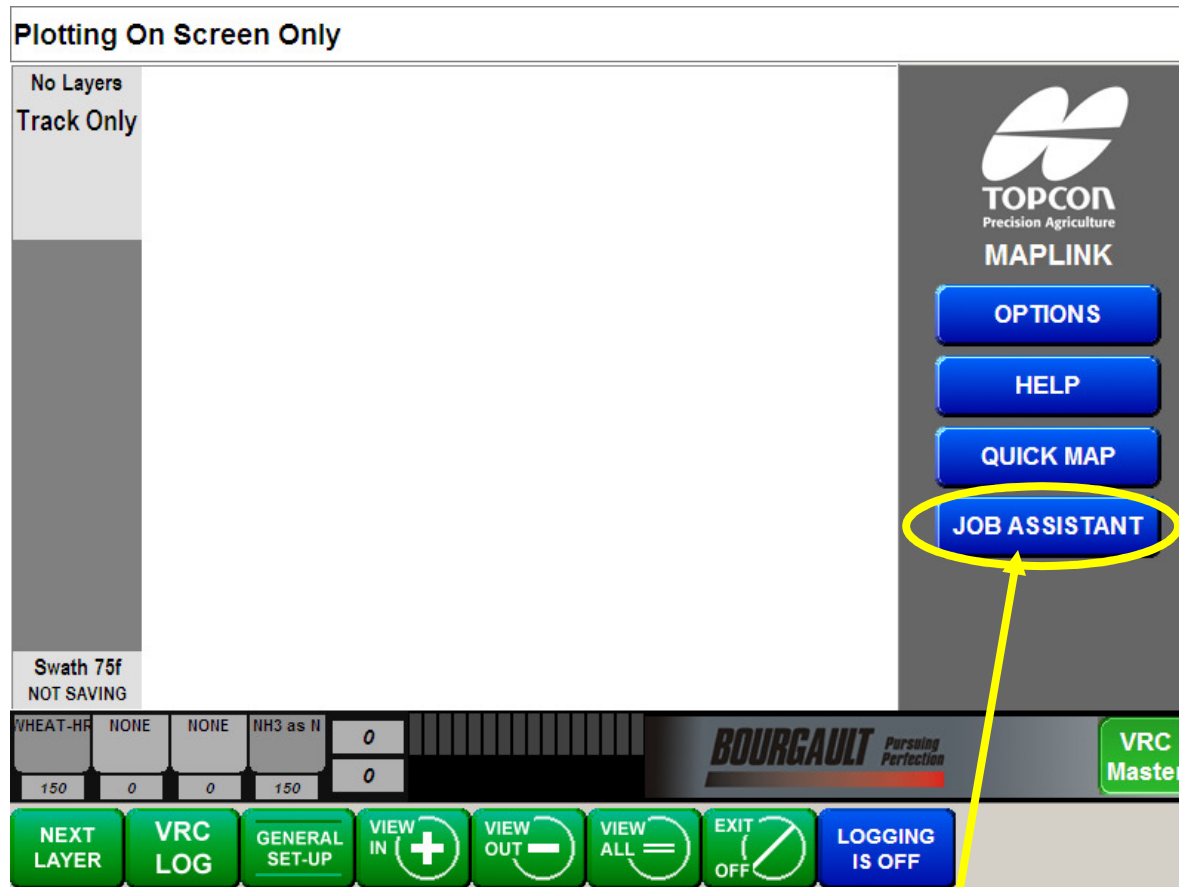
# Converting a Shape File



Press **CLOSE** to complete the process.



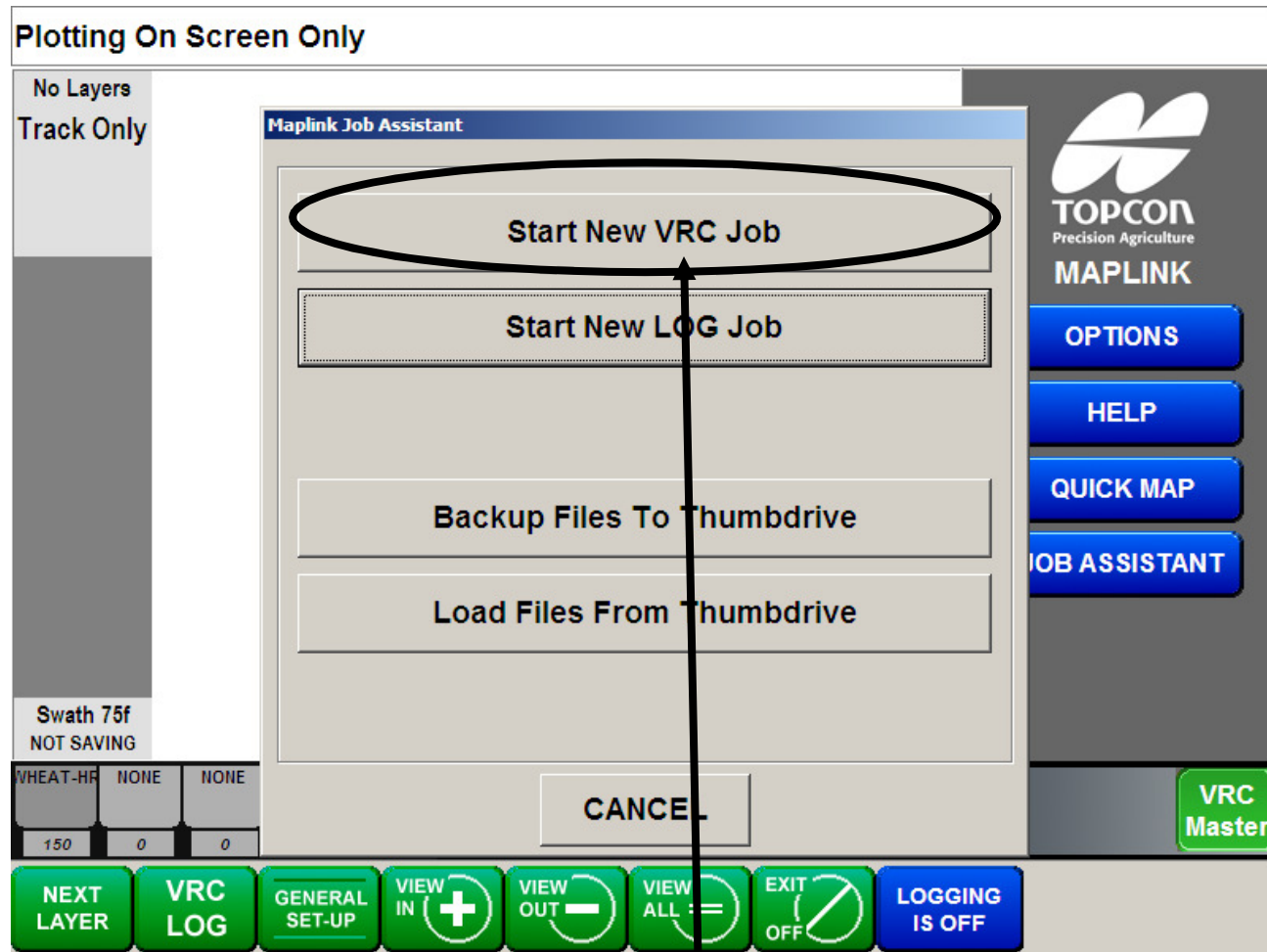
# Converting a Shape File



Now you are ready to load your map. First press  
**JOB ASSISTANT**

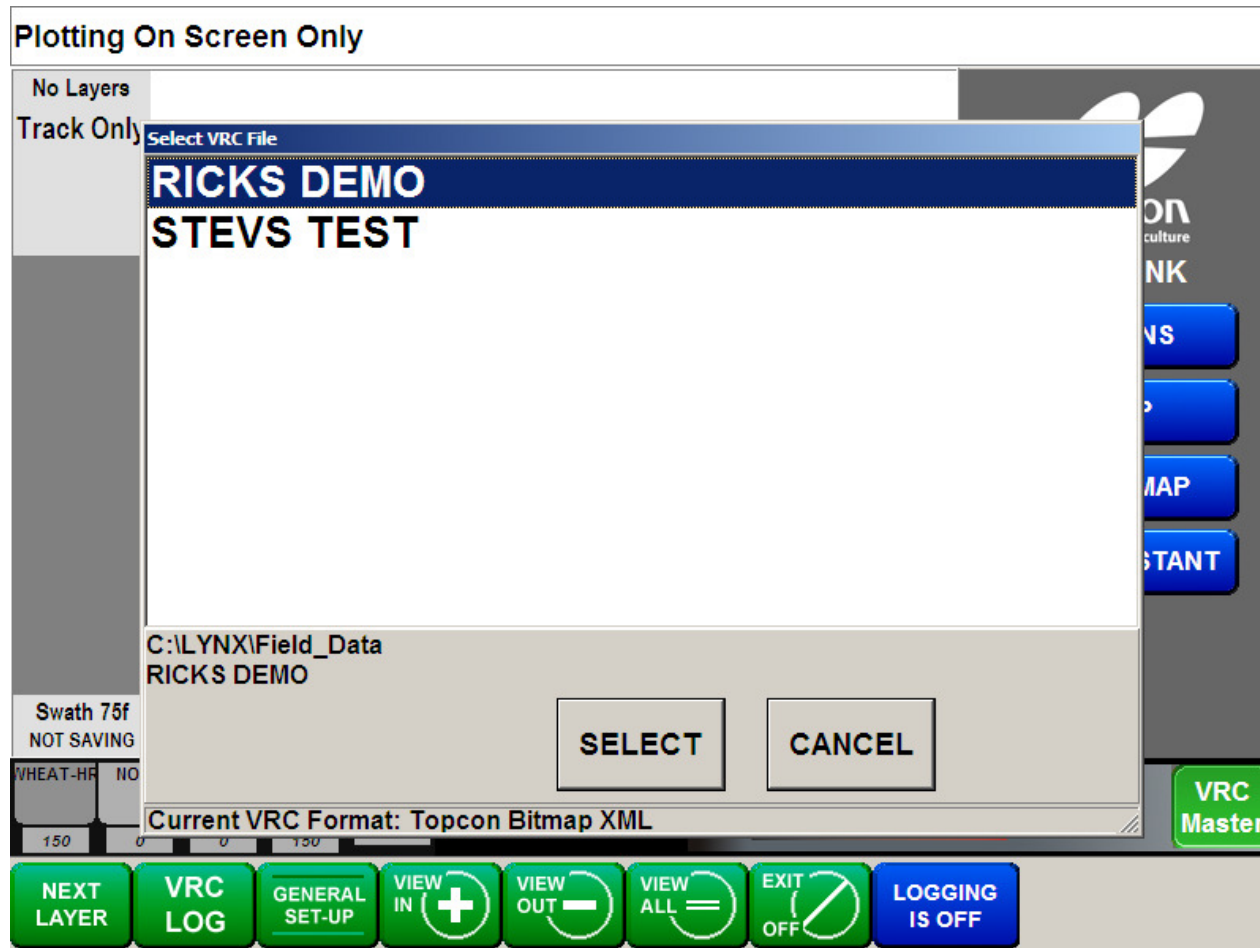


# Converting a Shape File



Press Start New VRC Job

# Converting a Shape File



Pick the Map you wish to load then press SELECT

# Converting a Shape File

Plotting On Screen Only

No Layers  
Track Only

Swath 75f  
NOT SAVING

VHEAT-HR NONE NONE NH3 as N  
150 0 0 150

Verify VRC File RICKS DEMO.XML

RICK  
Creator

CUSTOMER  
Customer Name

XYZ INC  
Farm Name

RICKS HOME QUARTER  
Field Name

2012 DEMO  
Note

acre  
Area Unit

OK CANCEL

VRC Format: Topcon Bitmap XML

Pursuing Perfection

VRC Master

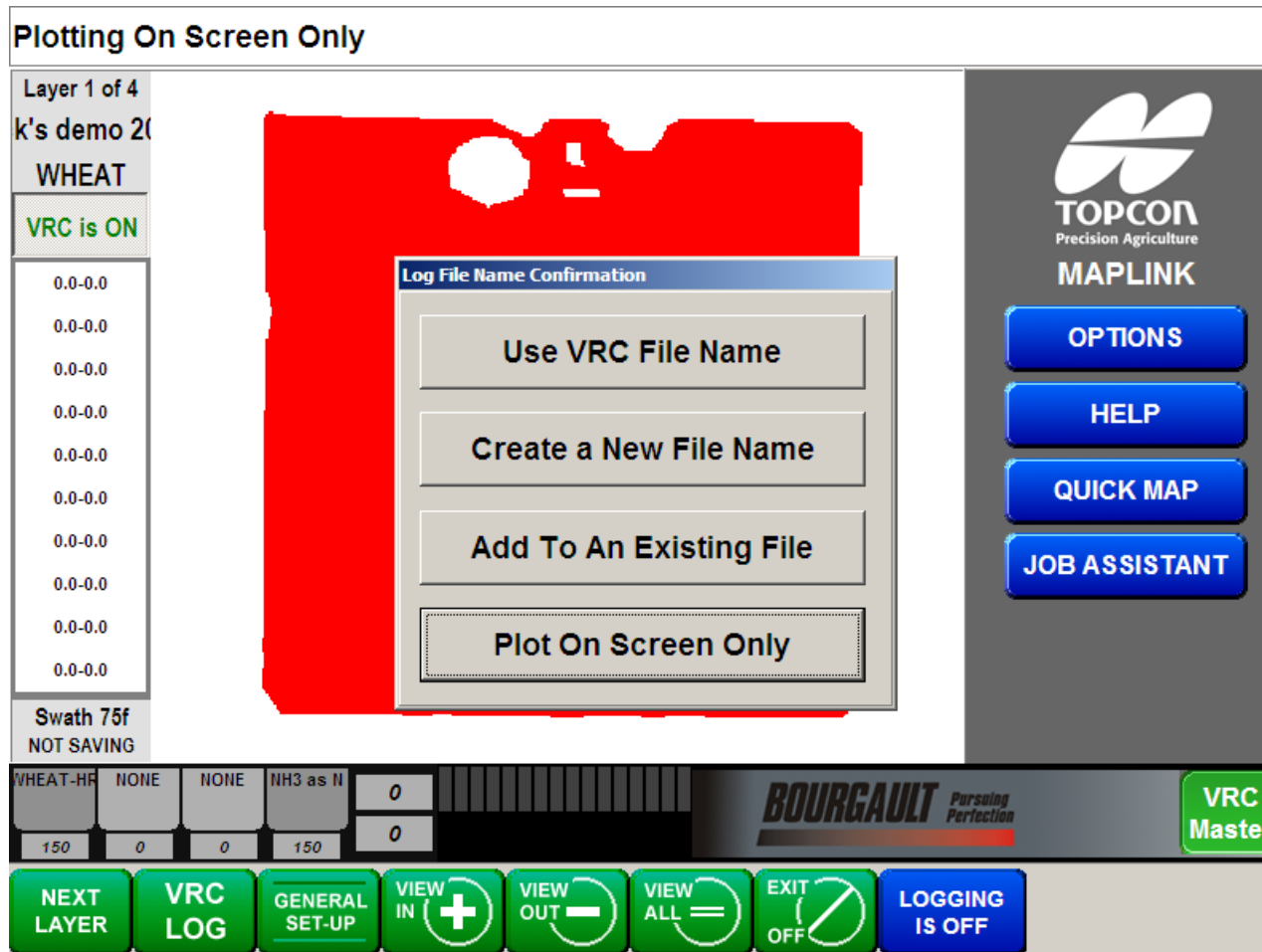
NEXT LAYER VRC LOG GENERAL SET-UP VIEW IN + VIEW OUT - VIEW ALL = EXIT OFF LOGGING IS OFF

TOPCON  
Precision Agriculture  
MAPLINK

OPTIONS  
HELP  
QUICK MAP  
JOB ASSISTANT

Verify the map details then press OK

# Converting a Shape File



Pick one of the above.

# Converting a Shape File



You have loaded your map and are ready to go.