



BOURGAULT

X30

Monitor/Controller

INGENUITY.

SIMPLICITY.

DURABILITY.

 **TOPCON**
Precision Agriculture

www.bourgault.com



Loading a VRC Map

The following steps will help you load a Variable Rate Control map (VRC) that was previously created in the proper file format. (see Building maps for X30 power-point in the Service and Parts section of the Bourgault web site in the Monitor Training folder)

- VRC – The three parts of a shape file that are needed for a Variable Rate map to work in an X30 (.dbf, .shp and .shx). These files must be in specific folders to be loaded in an X30 properly.



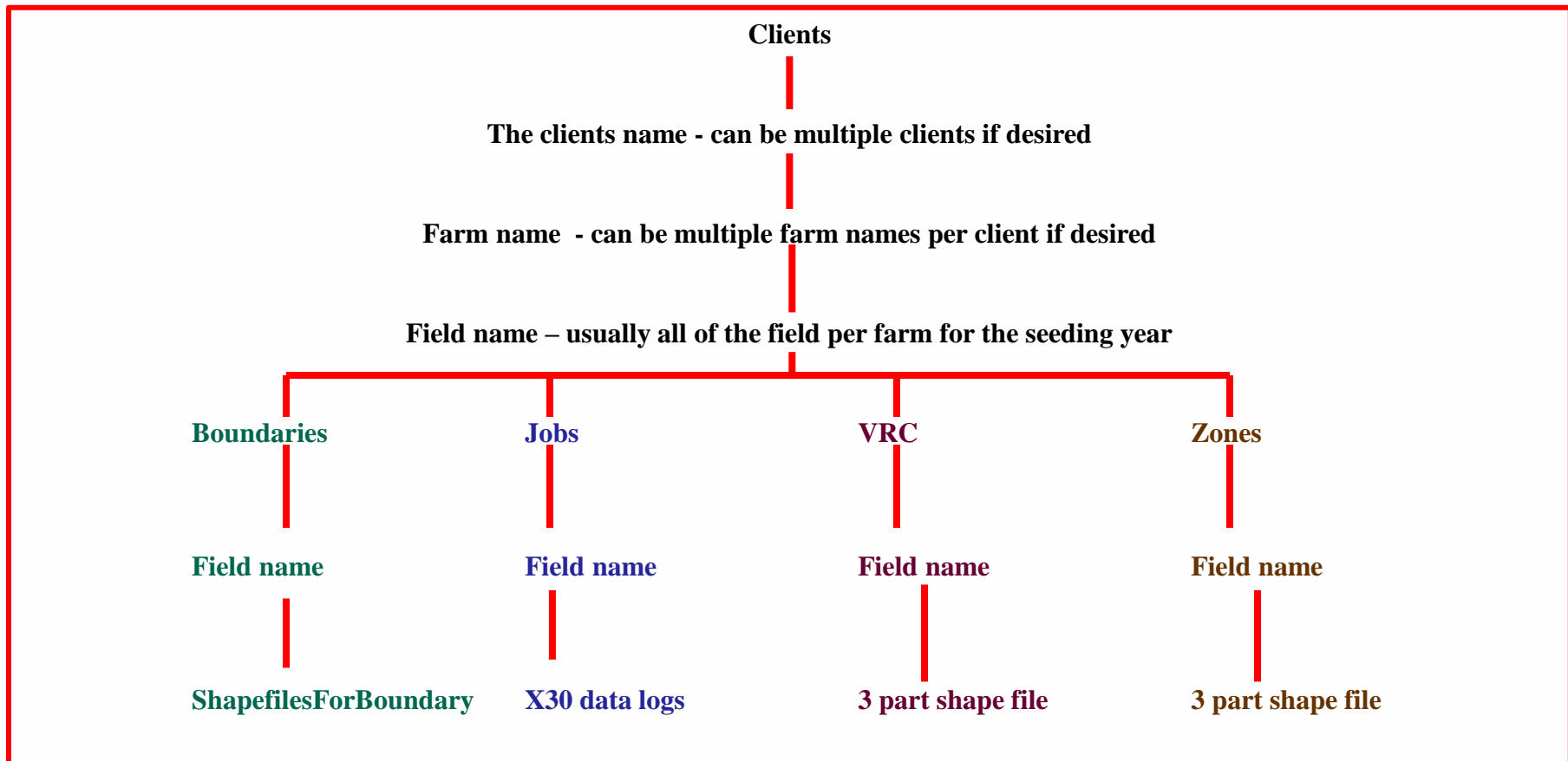
VRC maps require the folders in the following format

Create folders in the following format paying close attention to the lower case and capital letters.

- **Clients** – this is the primary folder that contains all of the other folders
 - **Client names** – You can create as many different clients as wish.
 - **Farm names** – Within each Client name you can have as many farm names as you wish.
 - **Field names** – Within Farm name you can have various field names.
 - **Boundaries**
 - **Jobs**
 - **VRC** – Folder that stores variable rate map files
 - **Field names** – Use the same name as above.
 - **This folder contains the actual files that make up the variable rate map. (.dbf, .shp, and .shx)**



The following pages outline how to transfer files to the hard drive of the X30 as long as the files are in the correct format.





To load a VRC map you must select a Field and start a Job



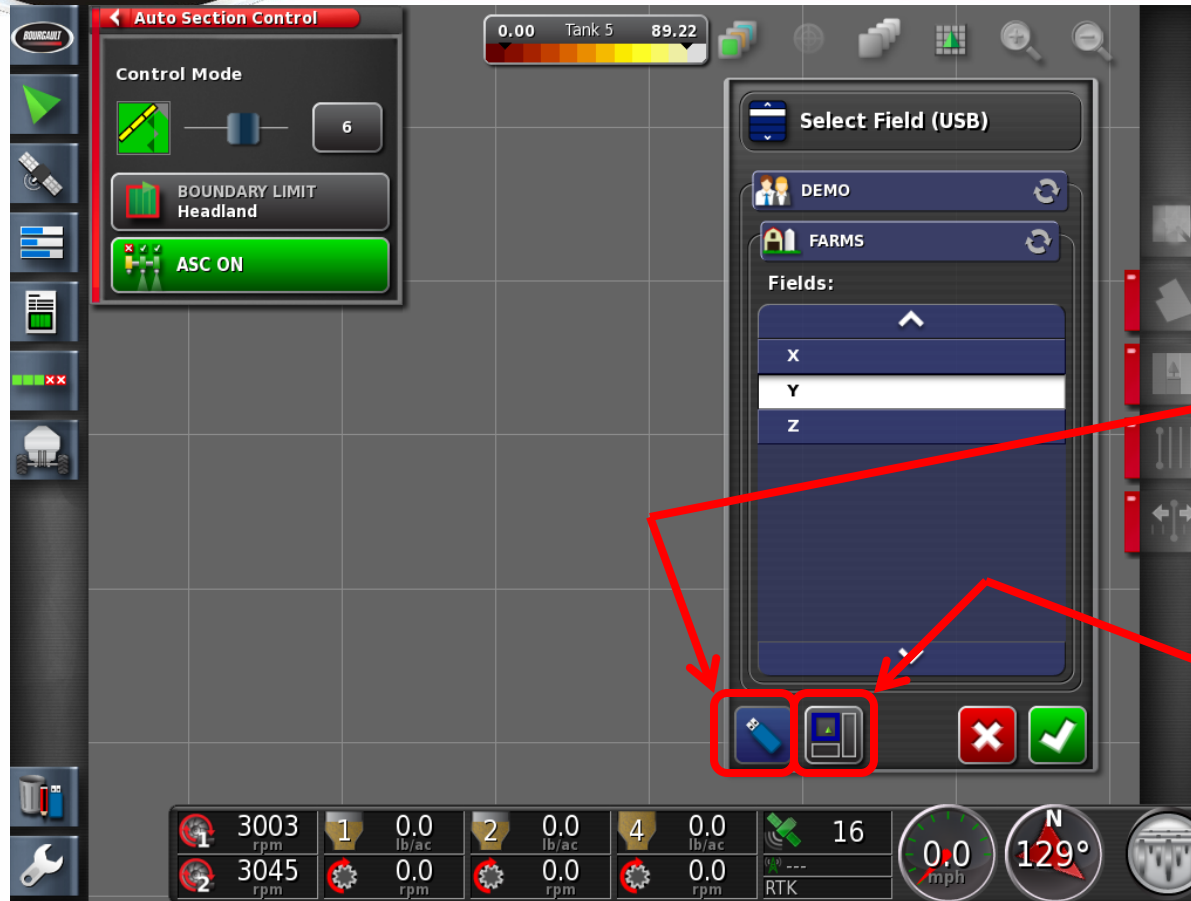
Tab for Field selection

Tab to start a Job



This tab lets you create a new Field name.

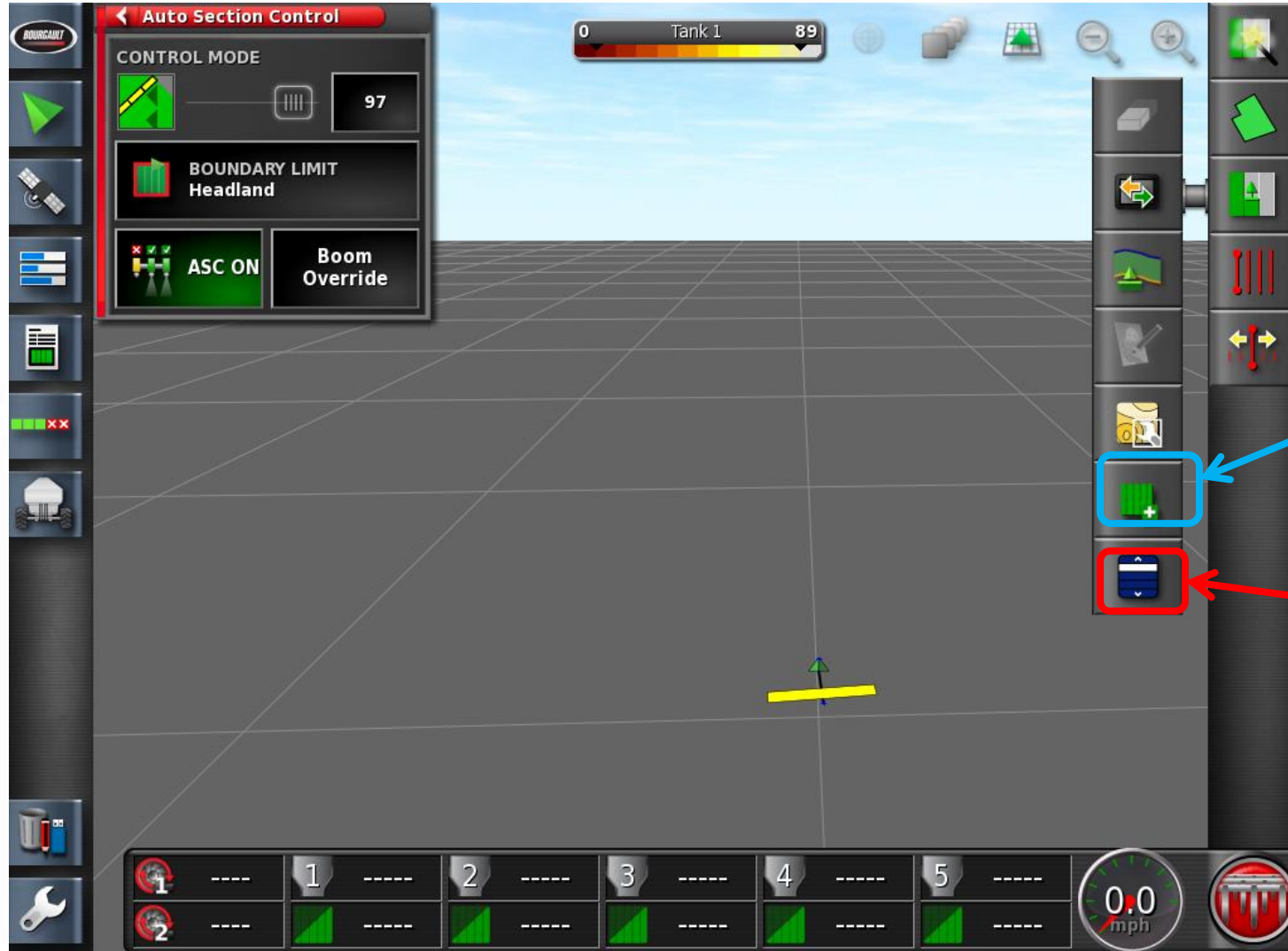
This tab lets you select a field from the X30 or thumb-drive.

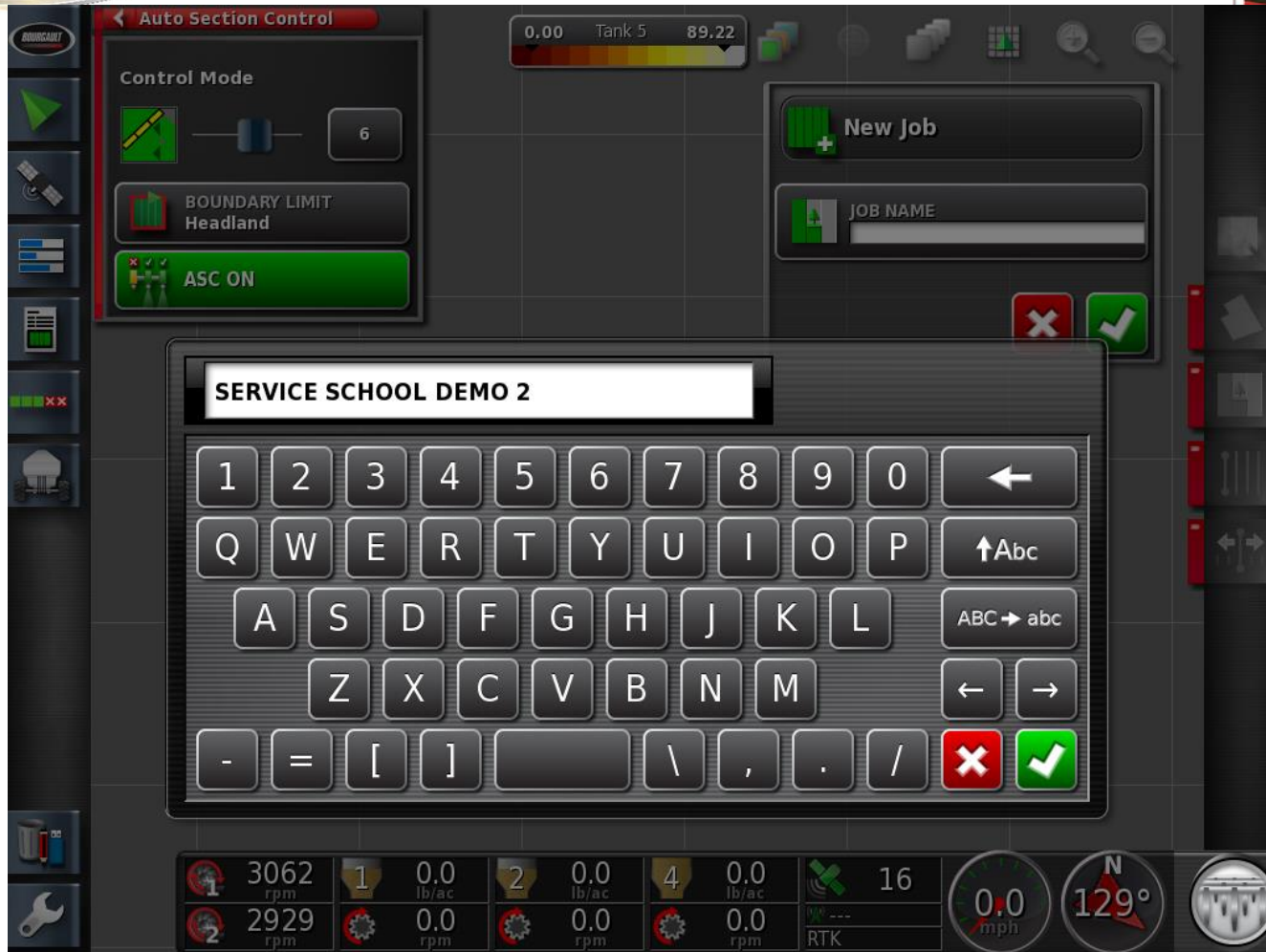


Touch to select from thumb-drive

Touch to select closest Field to GPS location.

Follow the prompts and select a Field from the X30, thumb-drive (as shown above) or select the closest Field





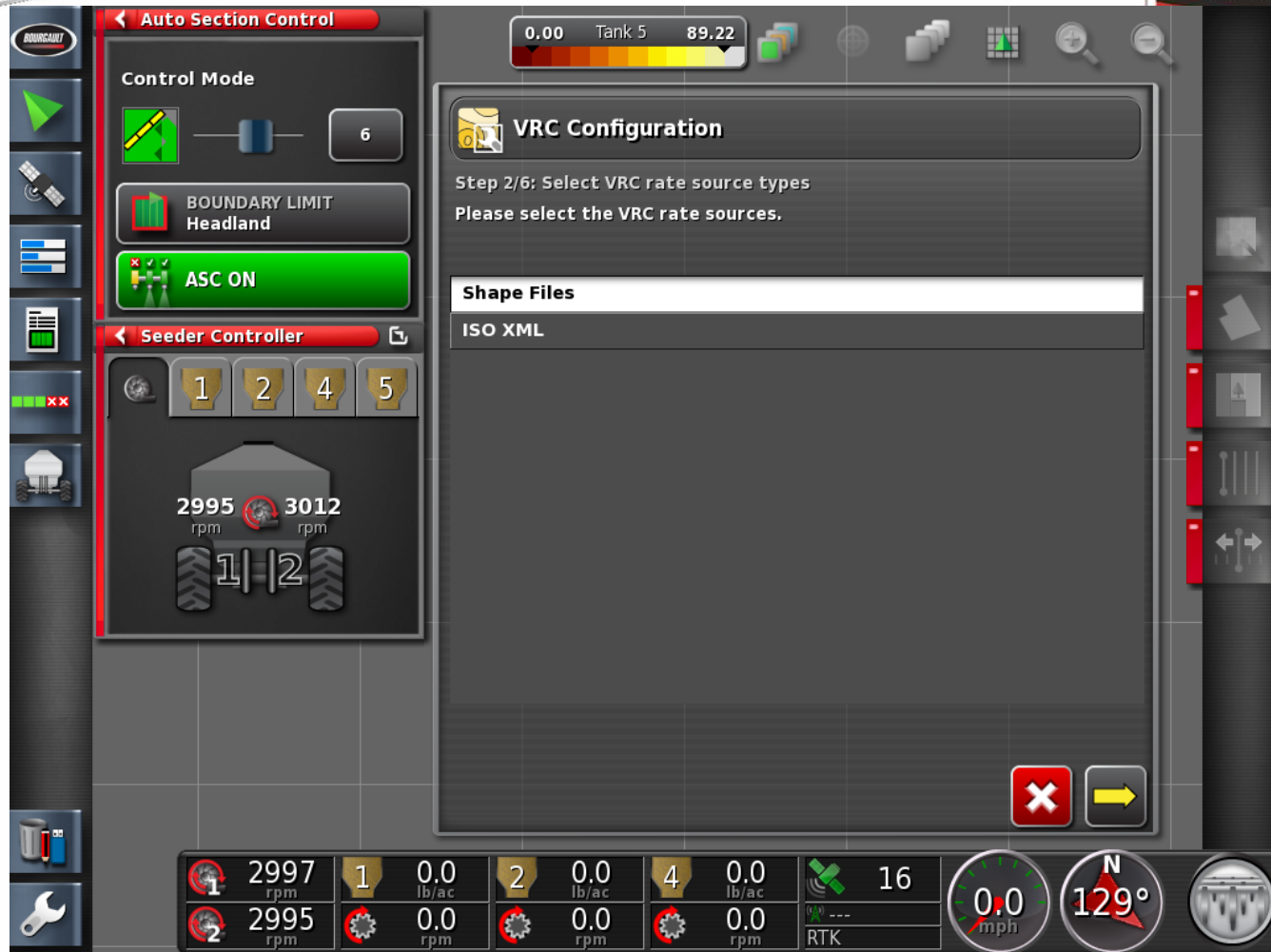
You can give a New Job a custom name if you wish, or use the name the X30 generates for you.



Select the VRC tab



Follow the VRC Configuration steps



Most VRC files and in Shape format.



Select the shape file you wish to use.



Auto Section C **Warning!**

Control Mode

BOUNDARY LIMIT Headland

ASC ON

Seeder Controller

3037 rpm 3061 rpm

1 2 4 5

1 2

Step 5/6: Map Rates to Channels

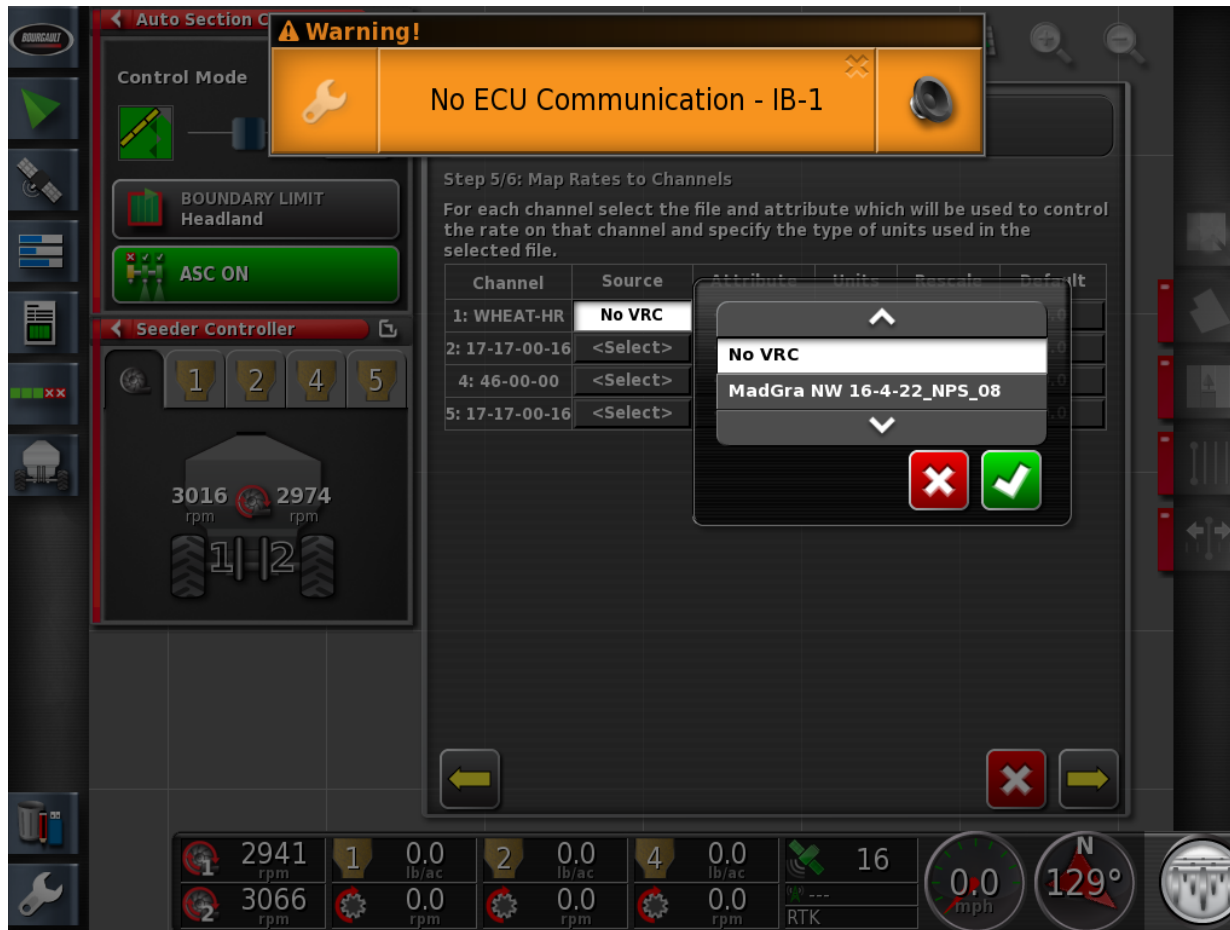
For each channel select the file and attribute which will be used to control the rate on that channel and specify the type of units used in the selected file.

Channel	Source	Attribute	Units	Rescale	Default
1: WHEAT-HR	<Select>	<Select>	lb/ac	1.00	0.0
2: 17-17-00-16	<Select>	<Select>	lb/ac	1.00	0.0
4: 46-00-00	<Select>	<Select>	lb/ac	1.00	0.0
5: 17-17-00-16	<Select>	<Select>	lb/ac	1.00	0.0

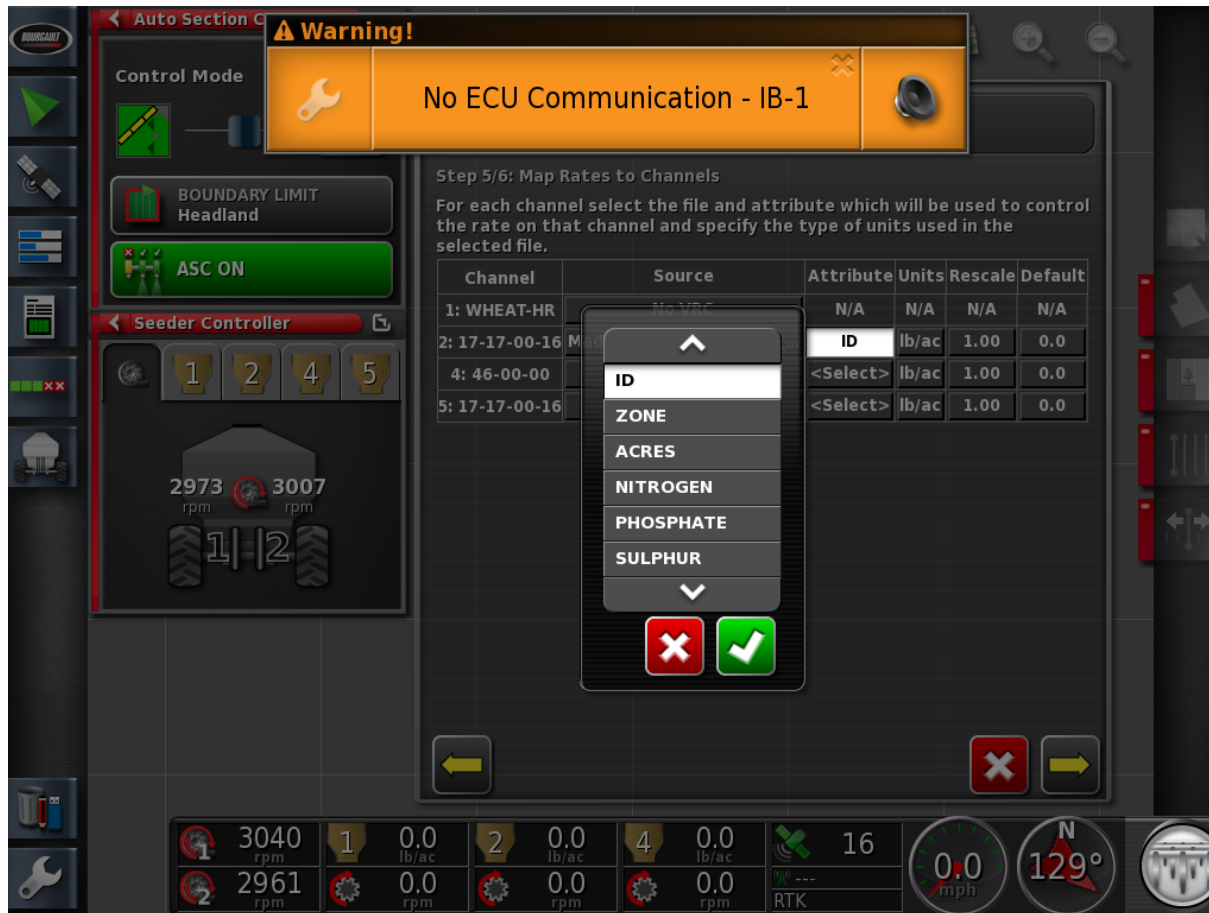
2953 rpm 1 0.0 lb/ac 2 0.0 lb/ac 4 0.0 lb/ac 16 RTK 0.0 mph N 129°

3035 rpm 2 0.0 rpm 0.0 rpm 0.0 rpm

You will have to assign the product in each tank. The Channel column show the product you selected for each tank from the seeder controller page.



Select a Source for each product, either No VRC or the VRC map



When VRC has been selected you must touch the Attribute tab and select the product to be used in the selected tank.



Warning!
No ECU Communication - IB-1

Control Mode

BOUNDARY LIMIT Headland

ASC ON

Seeder Controller

3021 rpm 3049 rpm

1 2 4 5

Step 5/6: Map Rates to Channels

For each channel select the file and attribute which will be used to control the rate on that channel and specify the type of units used in the selected file.

Channel	Source	Attribute	Units	Rescale	Default
1: WHEAT-HR	No VRC	N/A	N/A	N/A	N/A
2: 17-17-00-16	MadGra NW 16-4-22_NPS_...	ID			20
4: 46-00-00	<Select>	<Select>			0.0
5: 17-17-00-16	<Select>	<Select>			0.0

2926 rpm 1 0.0 lb/ac 2 0.0 lb/ac 4 0.0 lb/ac 16 RTK 0.0 mph 129°

2934 rpm 2 0.0 rpm 0.0 rpm 0.0 rpm

Always enter a Default rate for VRC tanks, failure to do so would cause the rate to go to “0” in the event that you loose GPS.



0.00 Tank 5 89.22

Auto Section Control

Control Mode

BOUNDARY LIMIT Headland

ASC ON

Seeder Controller

1 2 4 5

2943 rpm 2960 rpm

1 2

VRC Configuration

Step 5/6: Map Rates to Channels

For each channel select the file and attribute which will be used to control the rate on that channel and specify the type of units used in the selected file.

Channel	Source	Attribute	Units	Rescale	Default
1: WHEAT-HR	No VRC	N/A	N/A	N/A	N/A
2: 17-17-00-16	MadGra NW 16-4-22_N...	PHOSPHATE	lb/ac	1.00	20.0
4: 46-00-00	MadGra NW 16-4-22_N...	NITROGEN	lb/ac	1.00	75.0
5: 17-17-00-16	MadGra NW 16-4-22_N...	SULPHUR	lb/ac	1.00	1.0

← × →

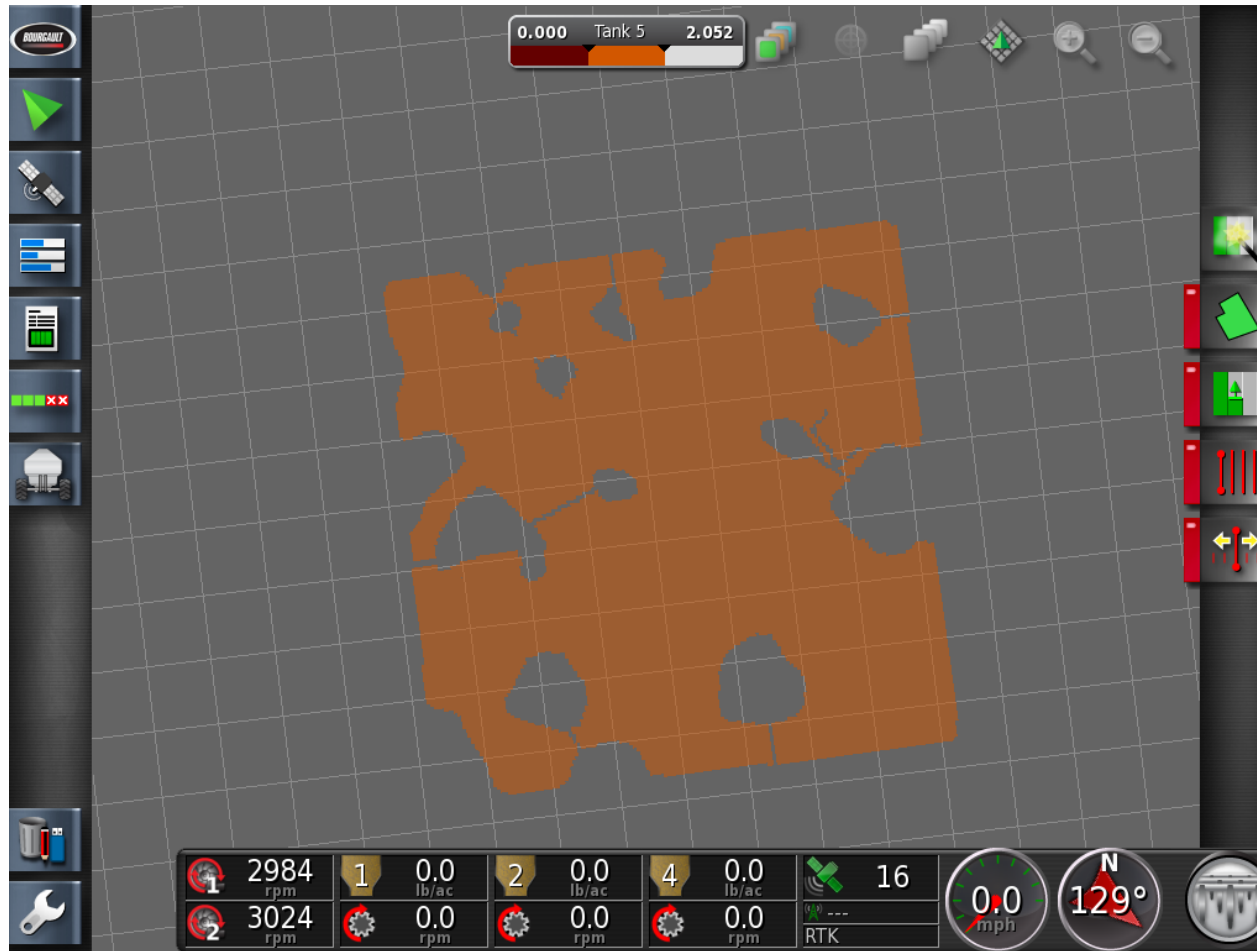
1 3058 rpm 1 0.0 lb/ac 2 0.0 lb/ac 4 0.0 lb/ac 16 RTK 0.0 mph 129°

2 2945 rpm 0.0 rpm 0.0 rpm 0.0 rpm

Confirm all of your selections then press the RH Yellow arrow



The Green check mark completes the VRC map loading process



The example shown above is a common example of how a VRC Shape looks like.
Refer to the Bourgault operators manual for more detailed information.