



BOURGAULT

X30

Monitor/Controller

INGENUITY.

SIMPLICITY.

DURABILITY.



TOPCON

Precision Agriculture

www.bourgault.com



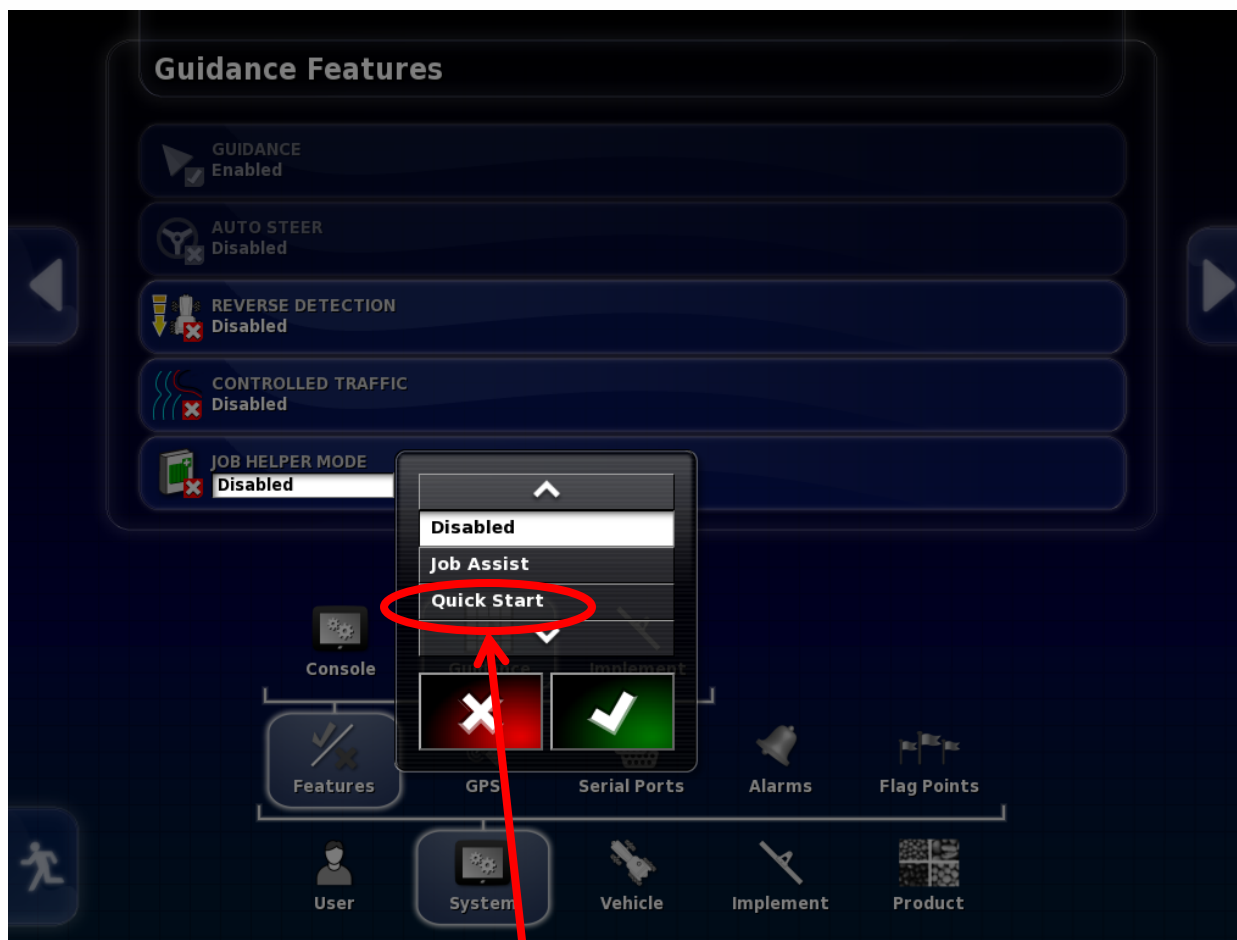
Using Quick Start

The following steps will help you enable and use Quick Start.

- **Quick Start is a program designed start important functions that are curtail to the proper function of some of the options such as section control and VRC.**
- **These important steps will simplify some of the more complex steps that many operators have difficulty remembering.**



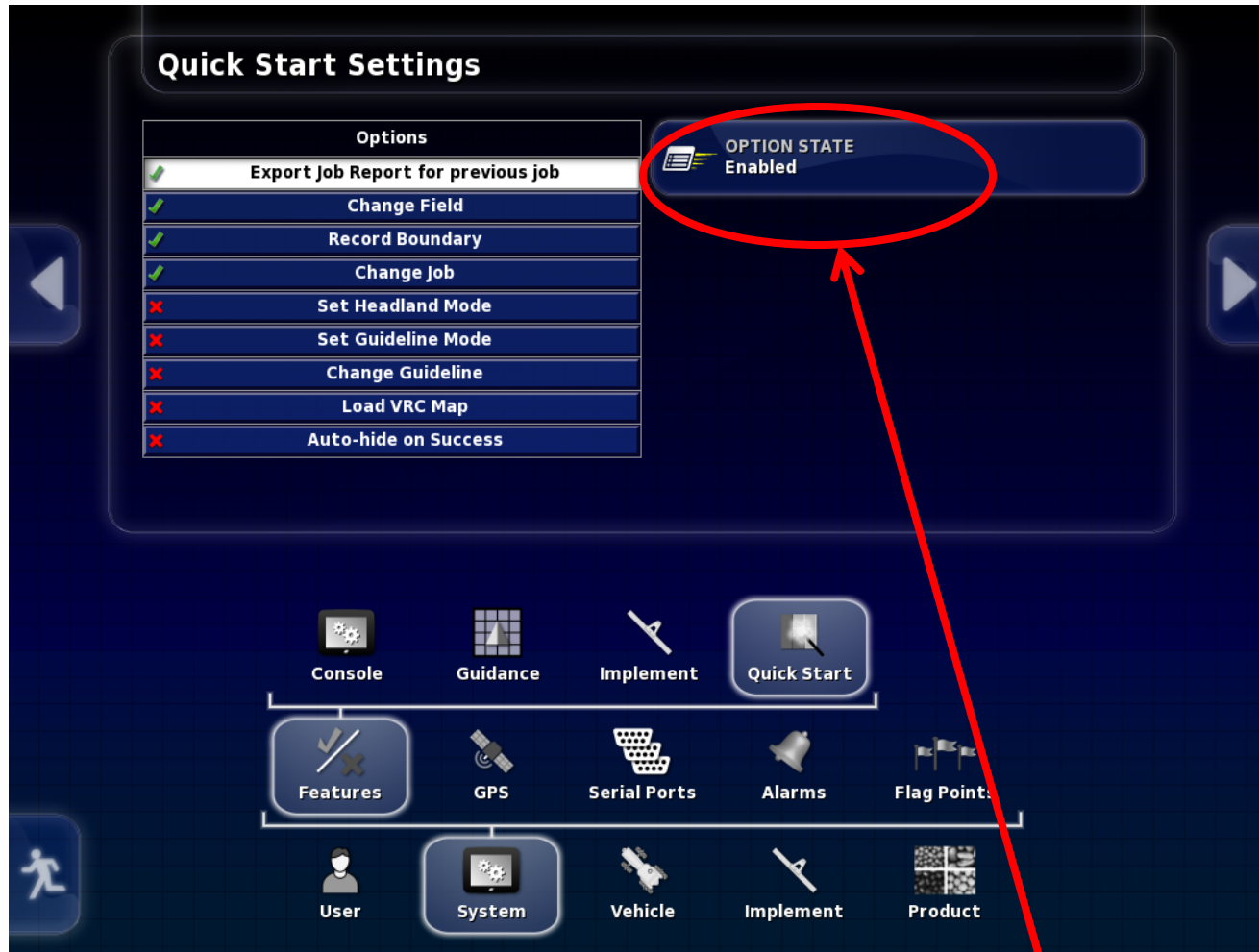
To enable Quick Start go to System/Features/Guidance



Select Quick Start



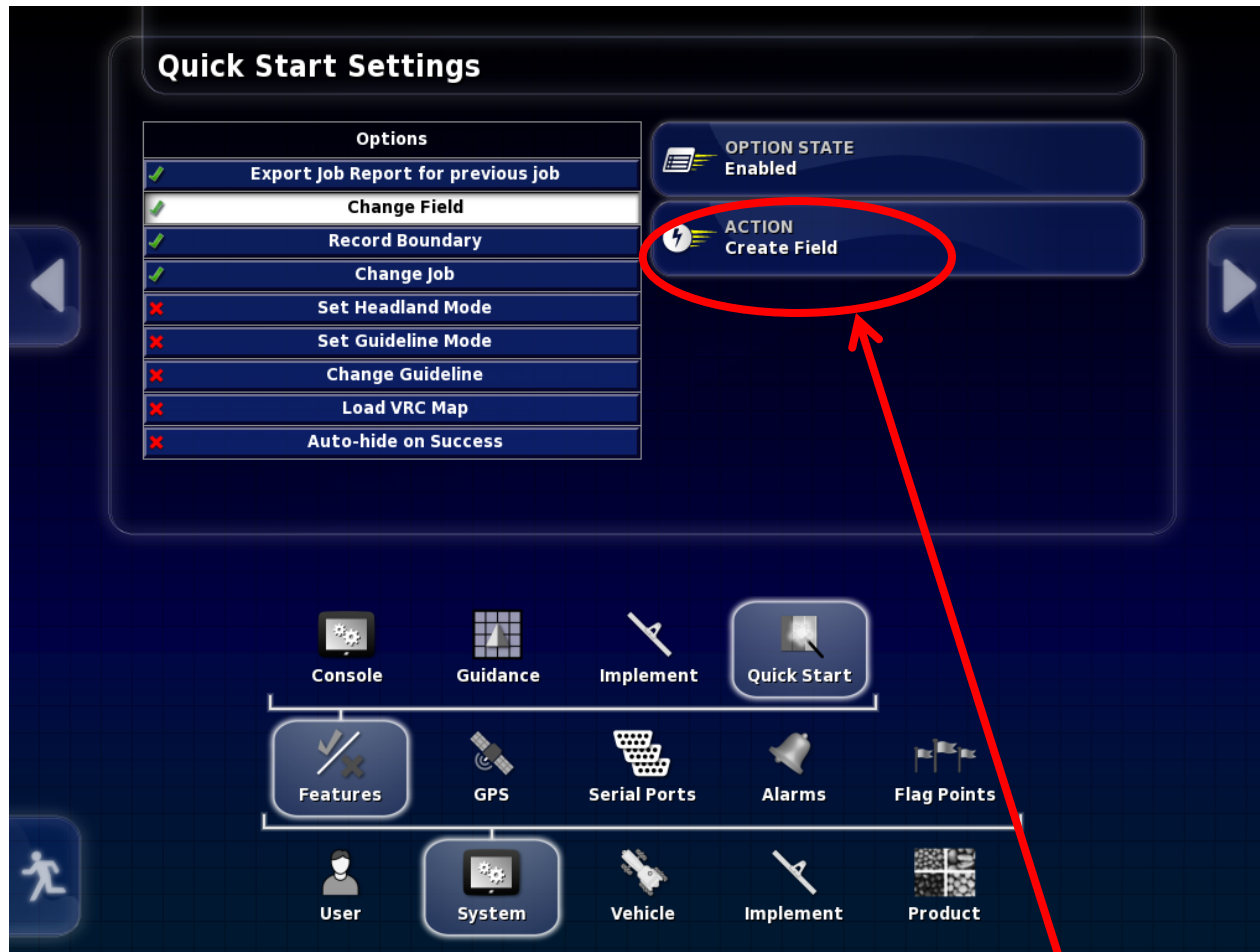
Select the new Quick Start Icon to pick the options.



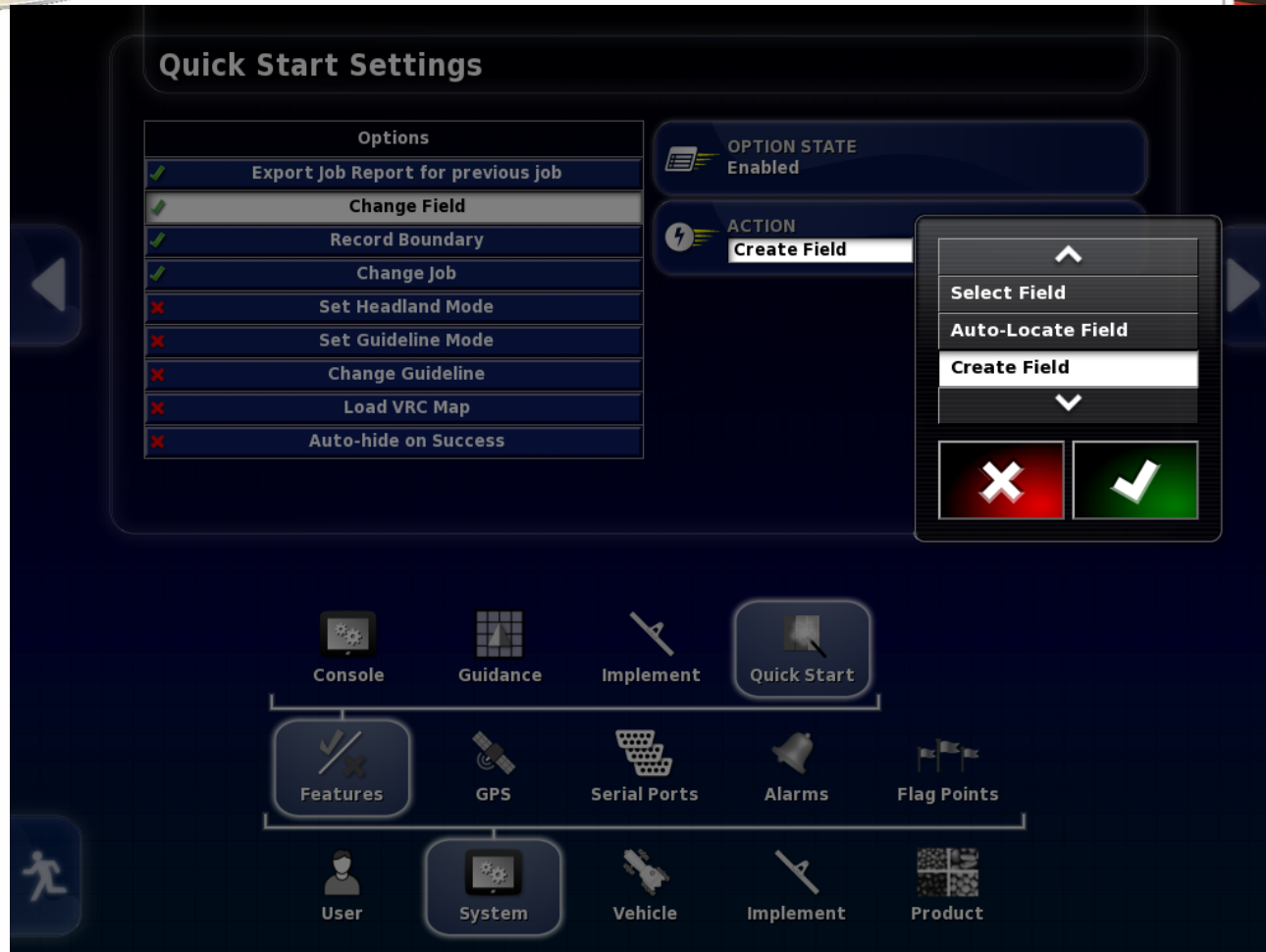
With each Option selected you get the option to disable or enable it.



Export Job Report for previous job will allow a job report to be automatically exported to a USB memory stick when the Quick Start button is pressed in the guidance section.



When Change Field is selected you may customize the Action



If the Fields were loaded with location shape files you could select Auto-Locate Field or Select Field, but if you don't have field locations select Create Field.



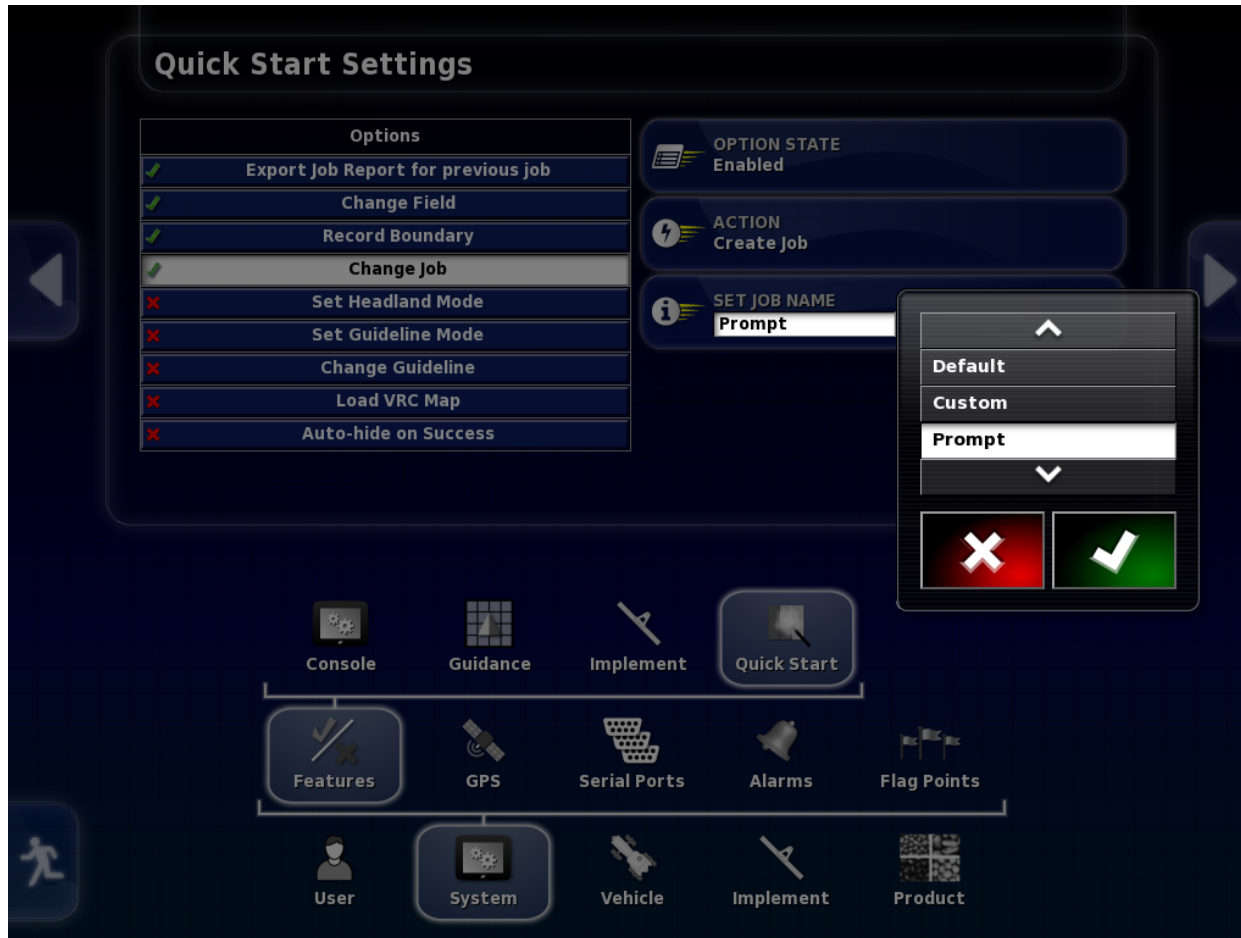
Change job has more options!



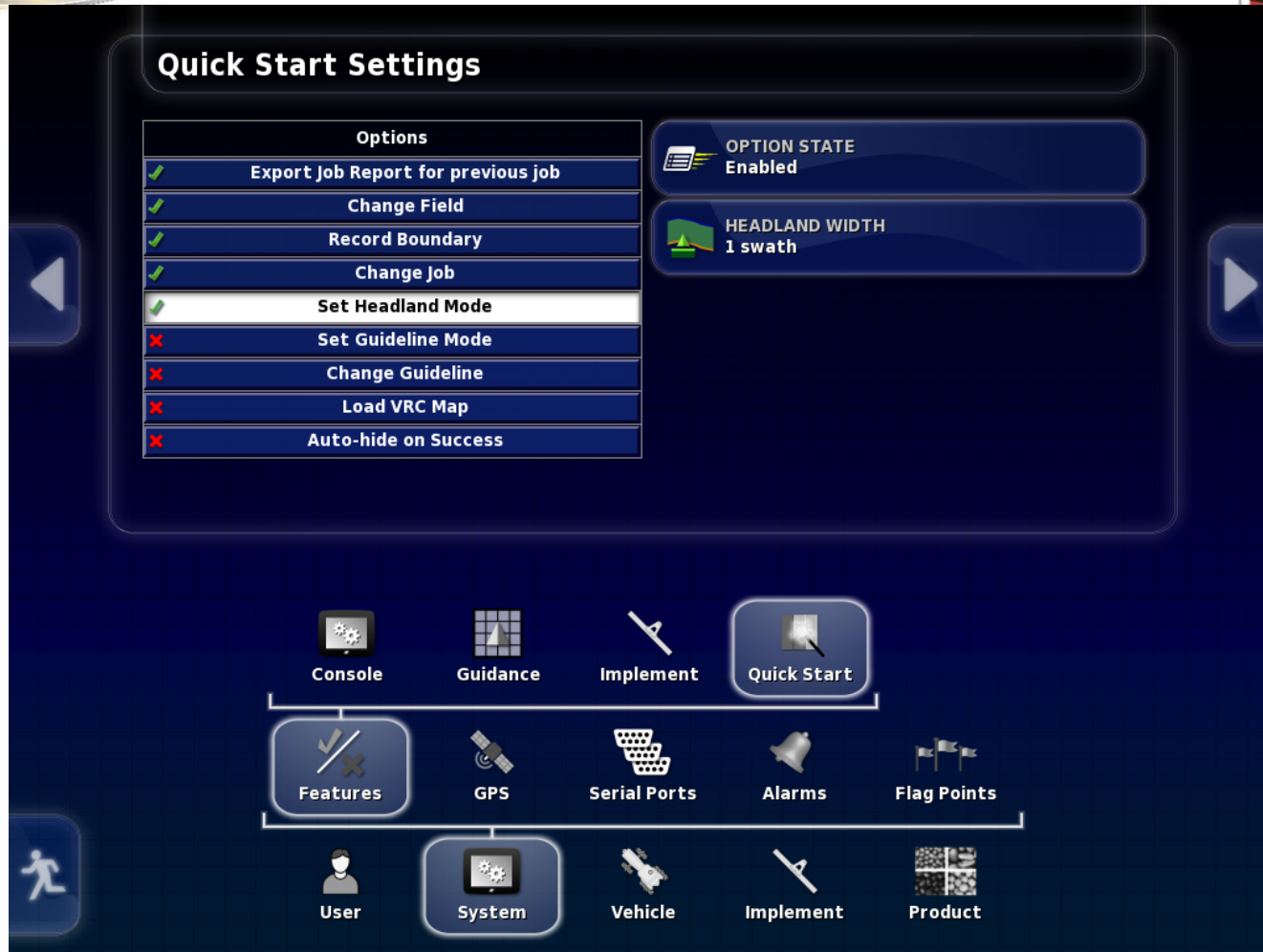
Change Job will automatically start a new job, in this selection you may customize the Action to select a previously named job or create a job.



The Change Job Action choices are Select Job (allows the selection of pre-named Jobs) or Create Job (directs you to create a new job name)



The Set Job Name allows you to choose Default (auto-generates a name), Custom (make a custom job name) or Prompt (starts the standard job selection process)



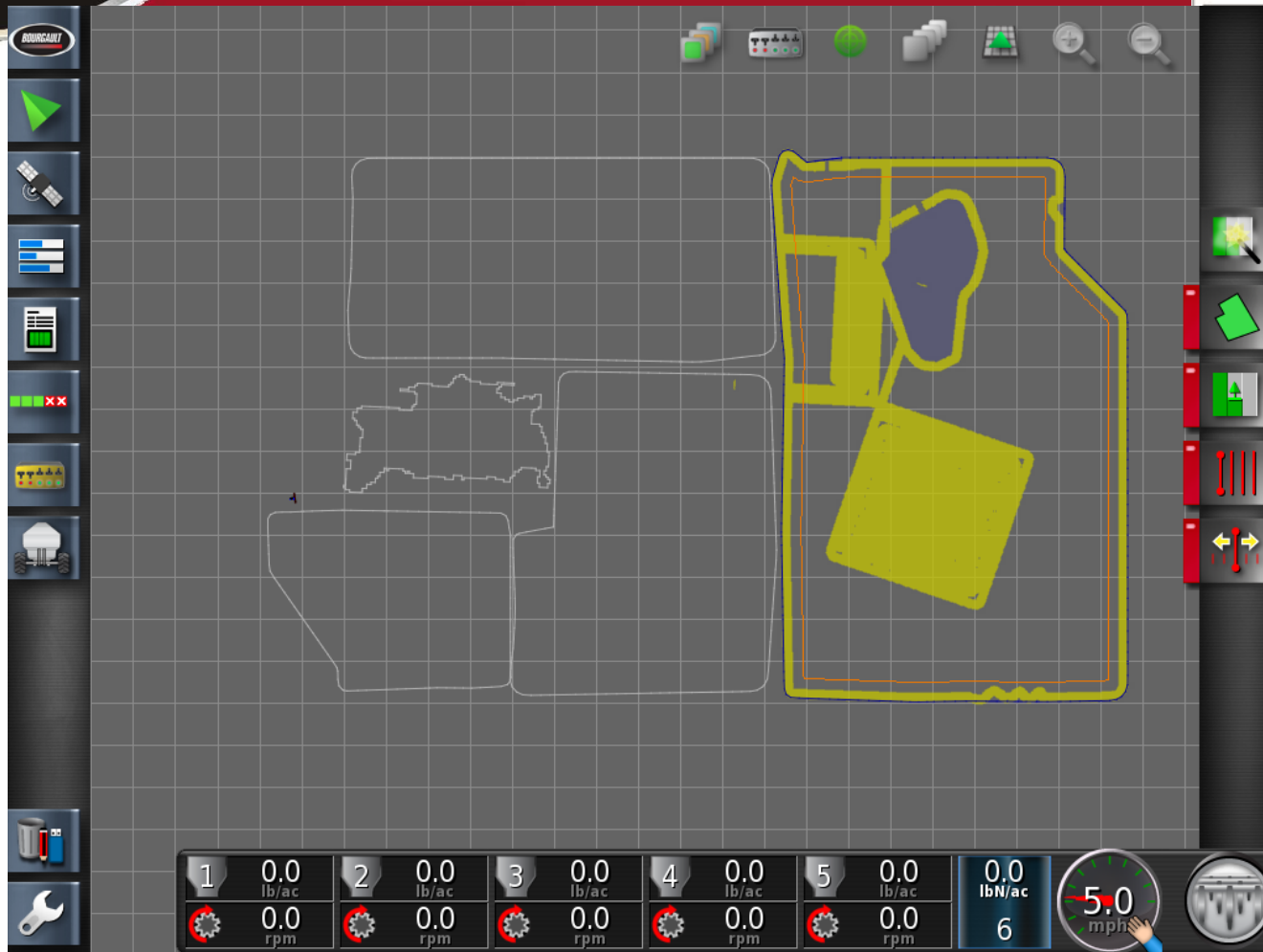
Set Headland Mode will automatically set a second boundary in a predetermined number of swaths. (Allows you to seed the headlands last)



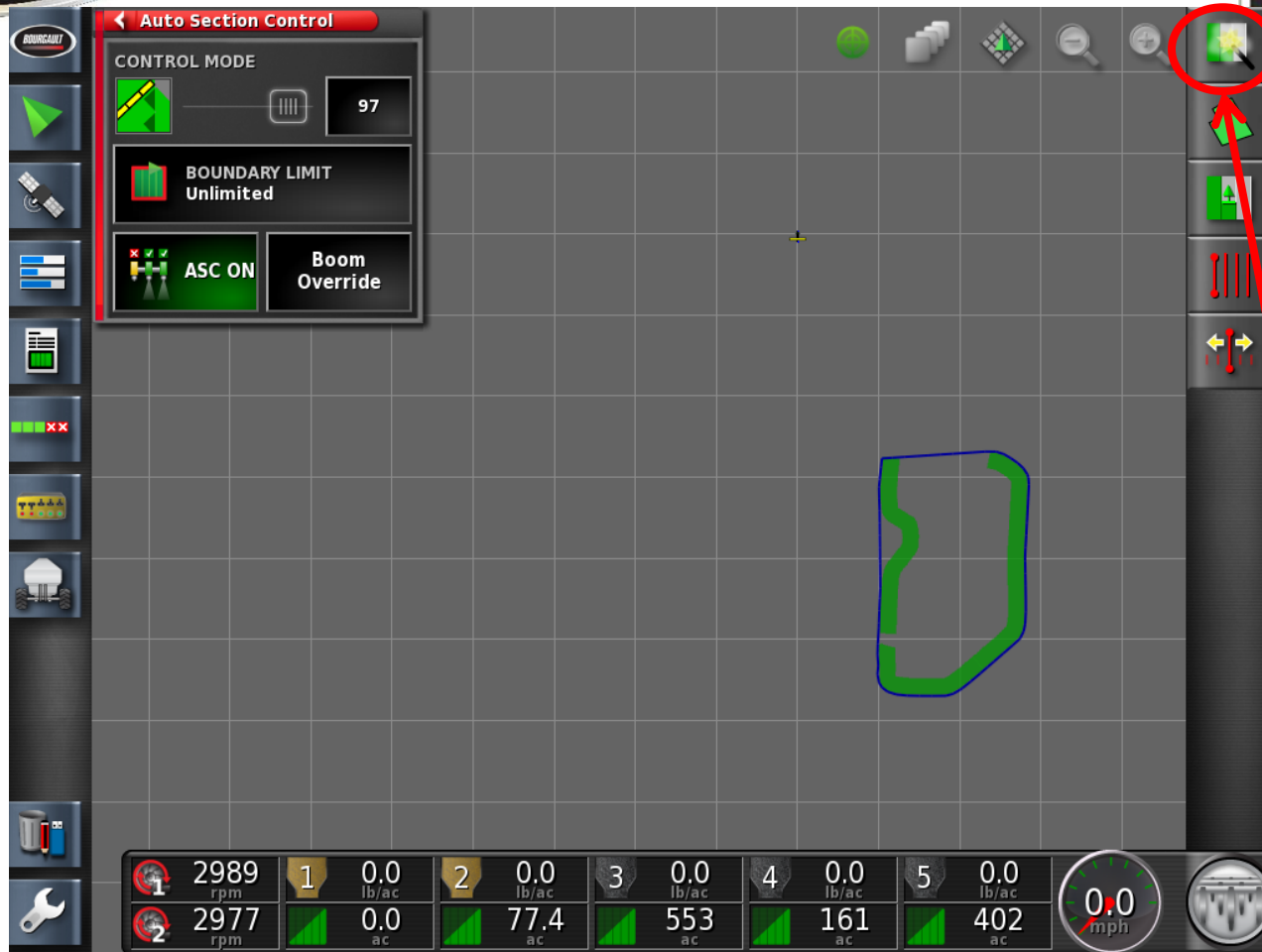
You may select the number of headland swaths here



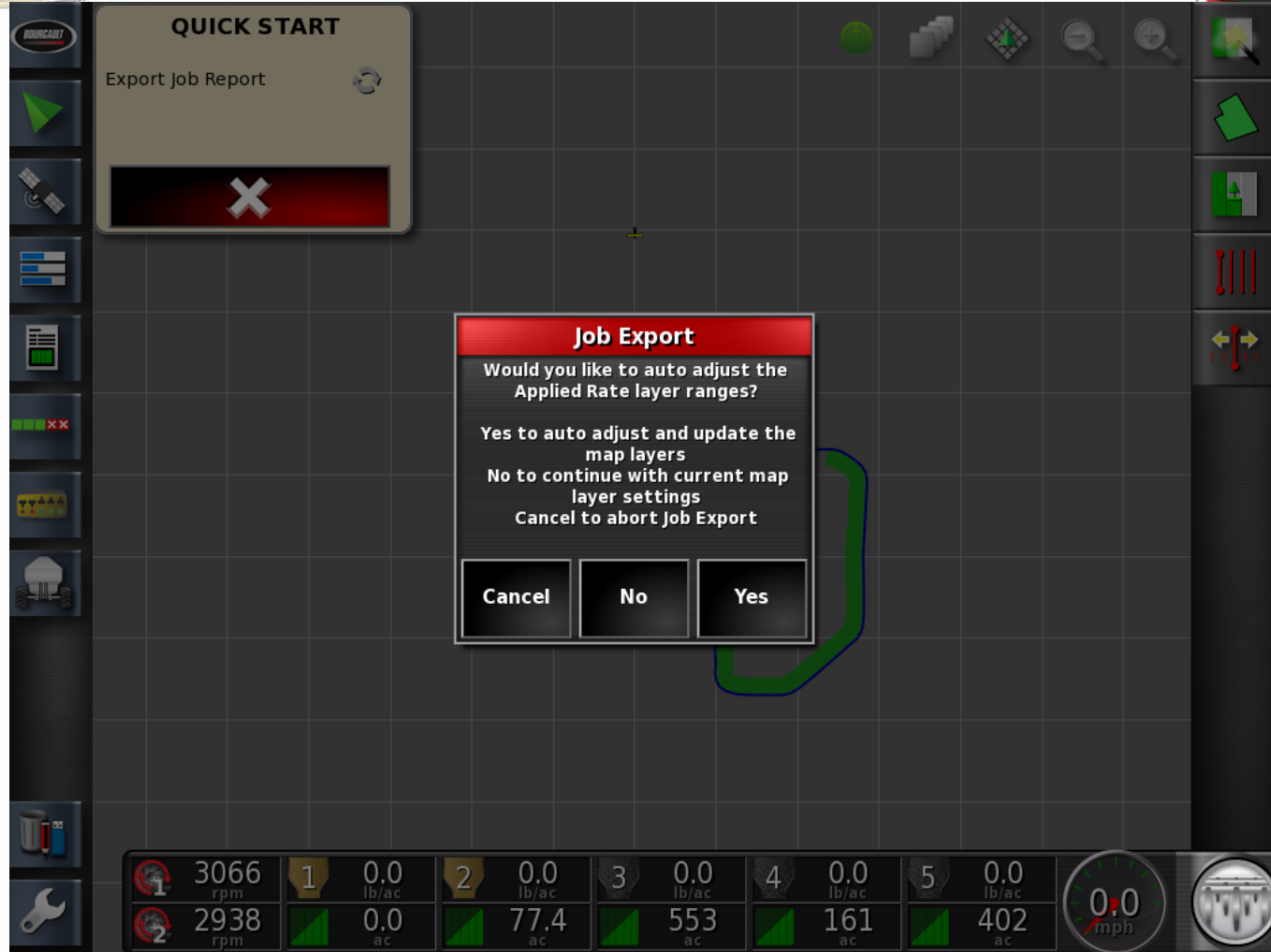
Exit the Setup section and enter the Guidance page. The Quick Start button is located at the top of the right hand menu.



The example above show the outline of previously recorded boundaries in light grey and the current field in yellow. The next pages are an example of what the process looks like when the Quick Start button is pressed with the options previously selected.



With a USB memory device installed in one of the USB ports press the Quick Start Icon



Export Job Report to USB memory stick is the first step, at this point it will ask some details about the map layers for the job report.



QUICK START

Export Job Report

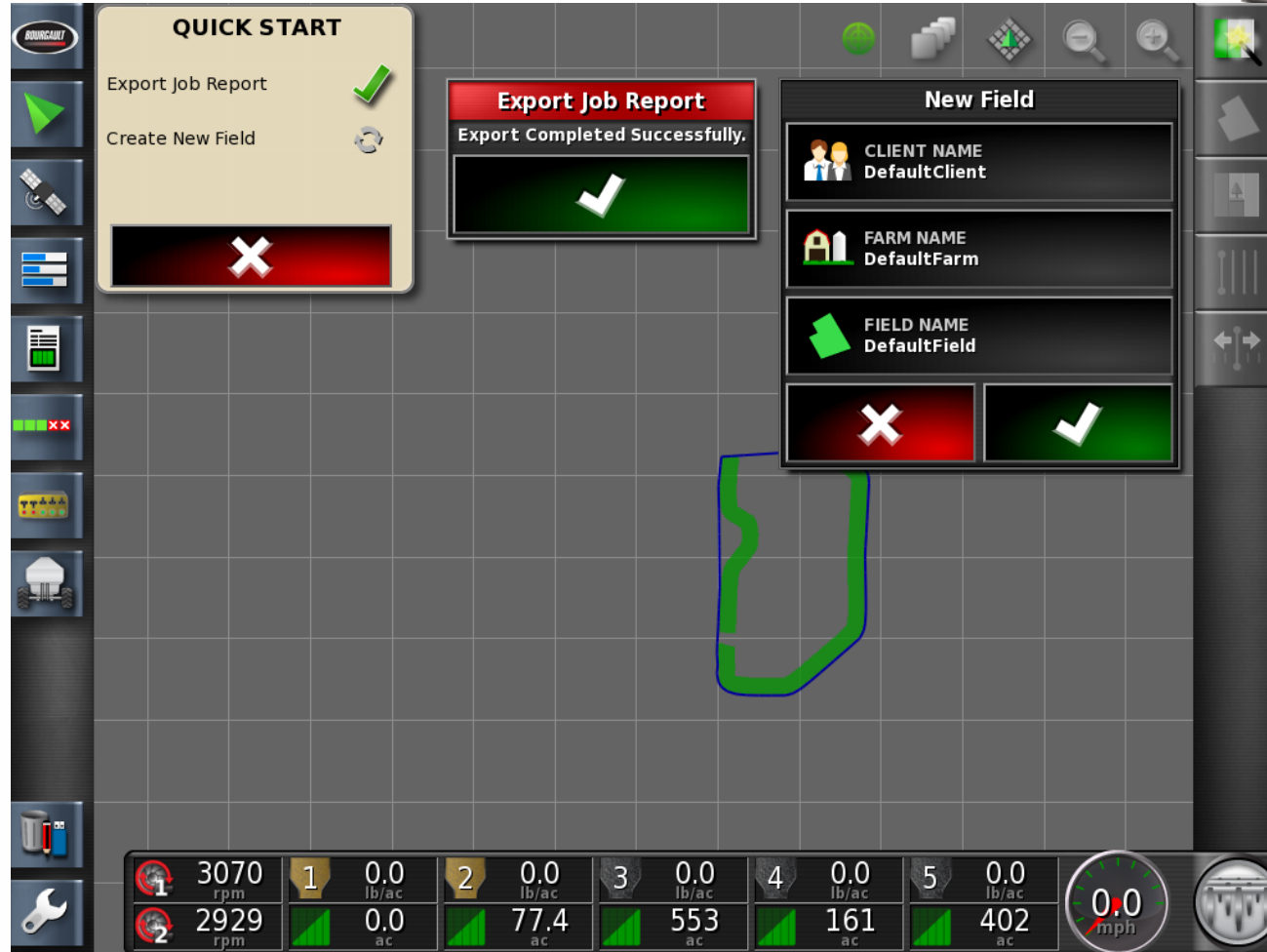
Exporting Job Report
Export In Progress.
Please Wait...

1 2997 rpm
2 3010 rpm

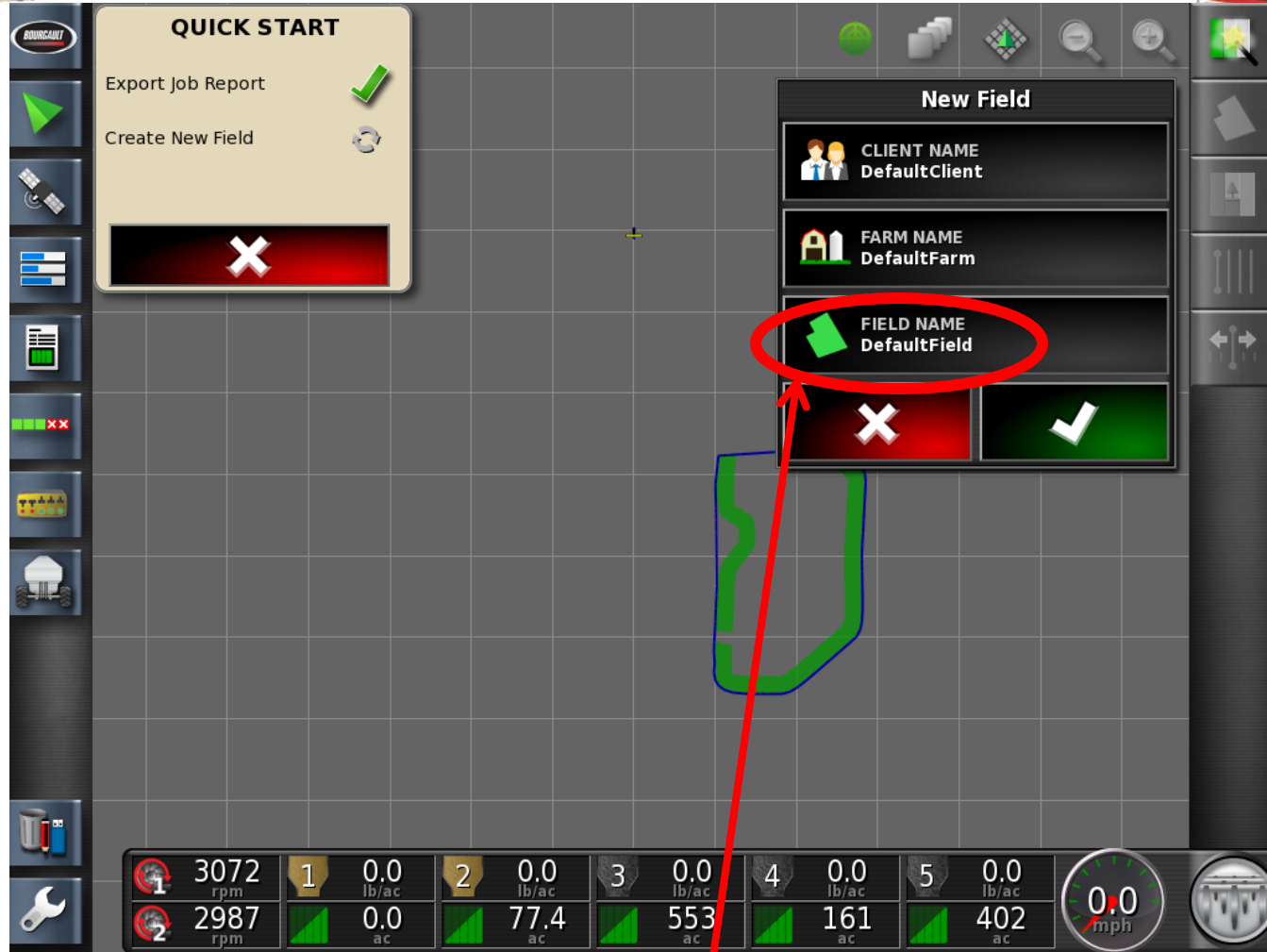
1	2	3	4	5
0.0 lb/ac	0.0 lb/ac	0.0 lb/ac	0.0 lb/ac	0.0 lb/ac
0.0 ac	77.4 ac	553 ac	161 ac	402 ac

0.0 mph

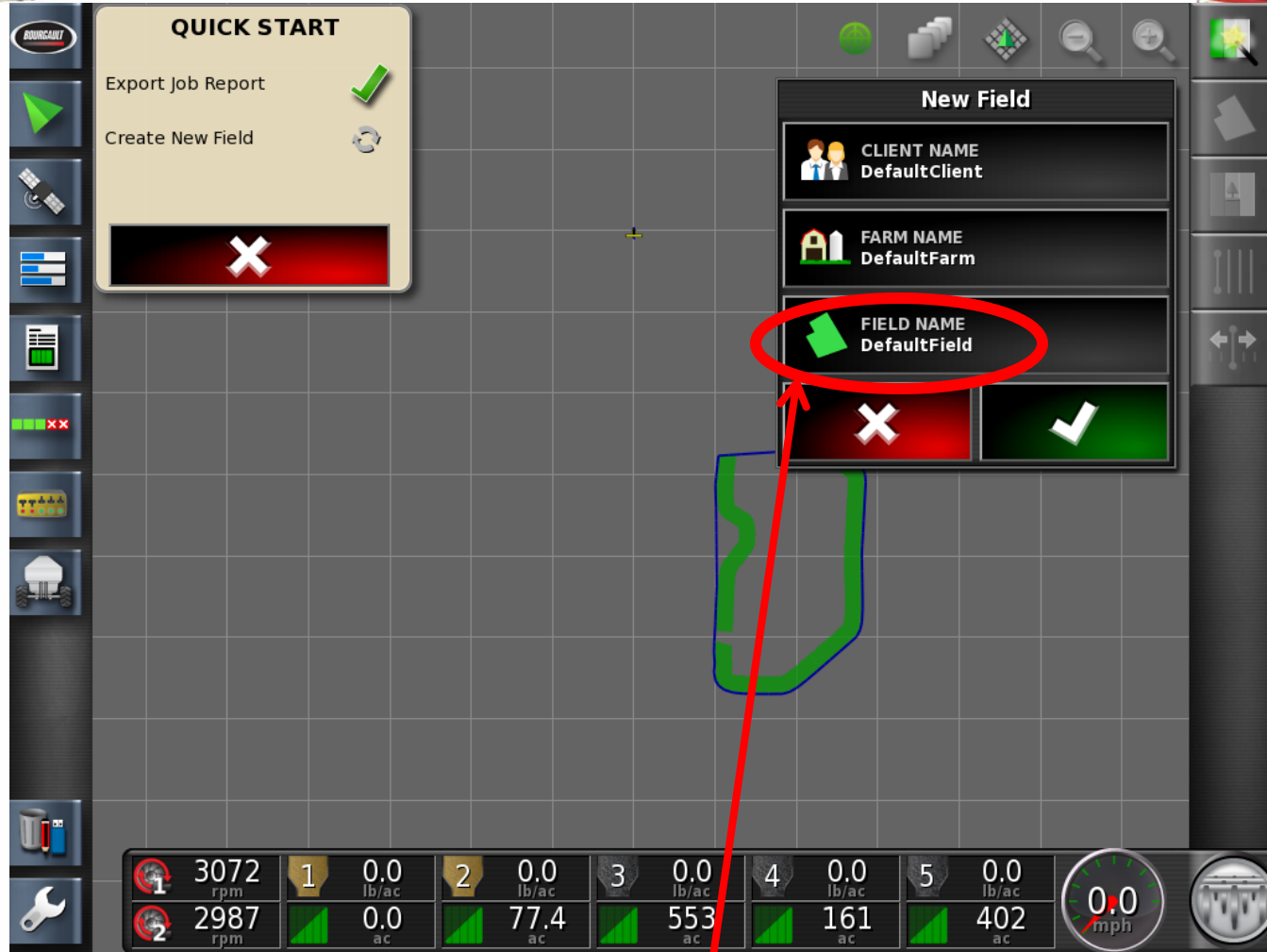
Wait for the Job Report to Export



Show that the Job Report
Export was successful



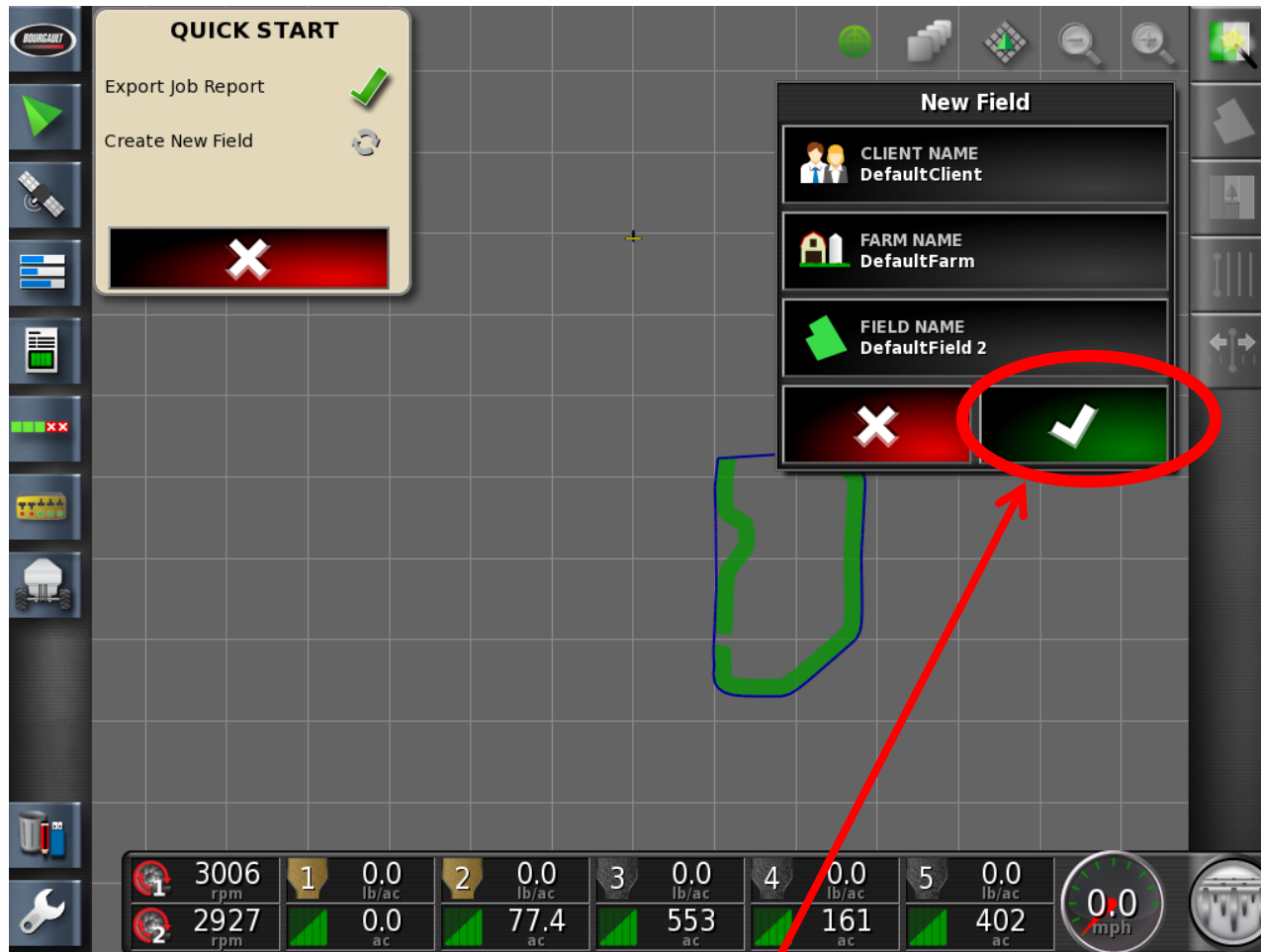
Select the Field



Select the Field



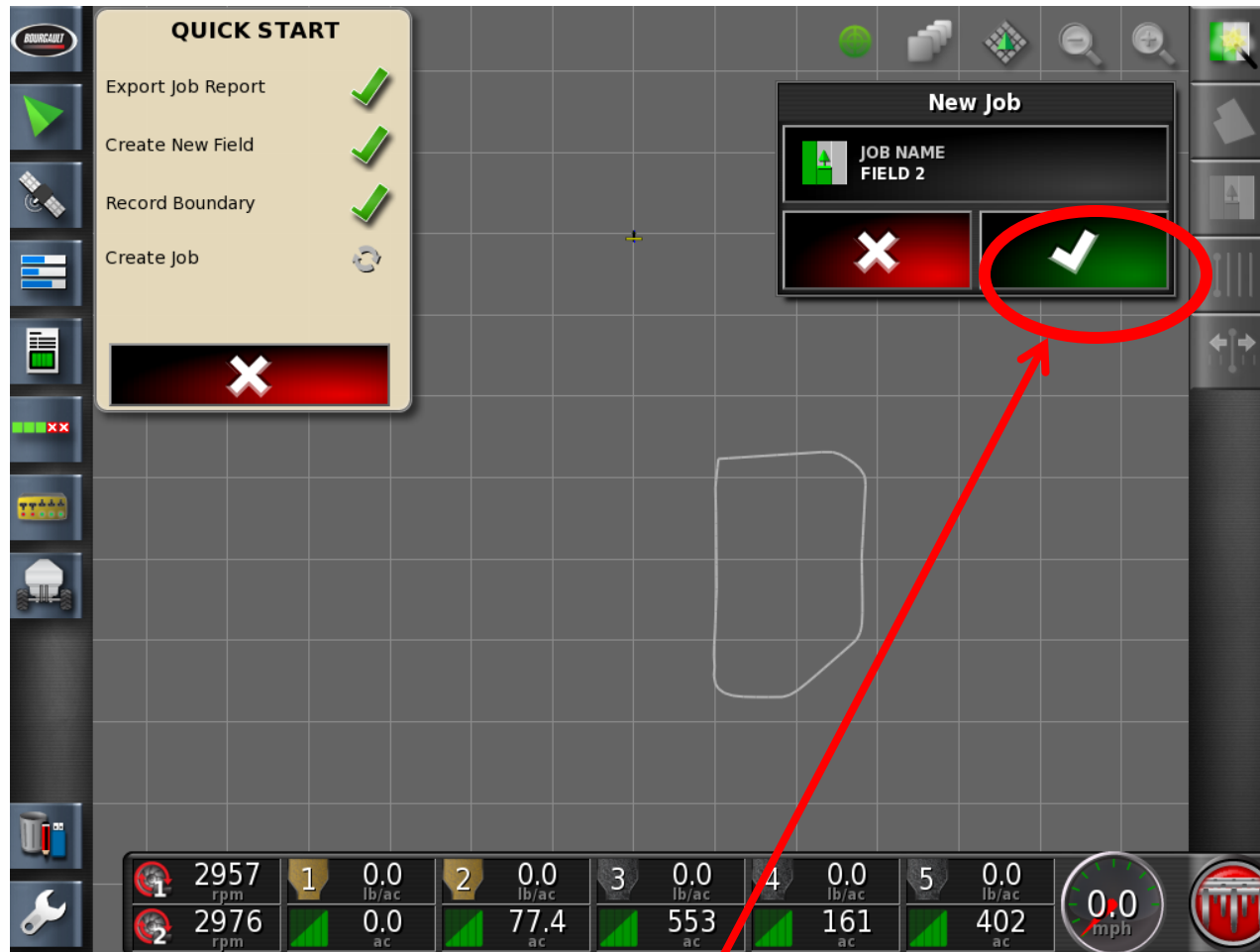
Name your New Field



Review and accept
your new field name



Name your New Job.



Confirm the Job Name.



QUICK START

Export Job Report

Create New Field

Record Boundary

Create Job

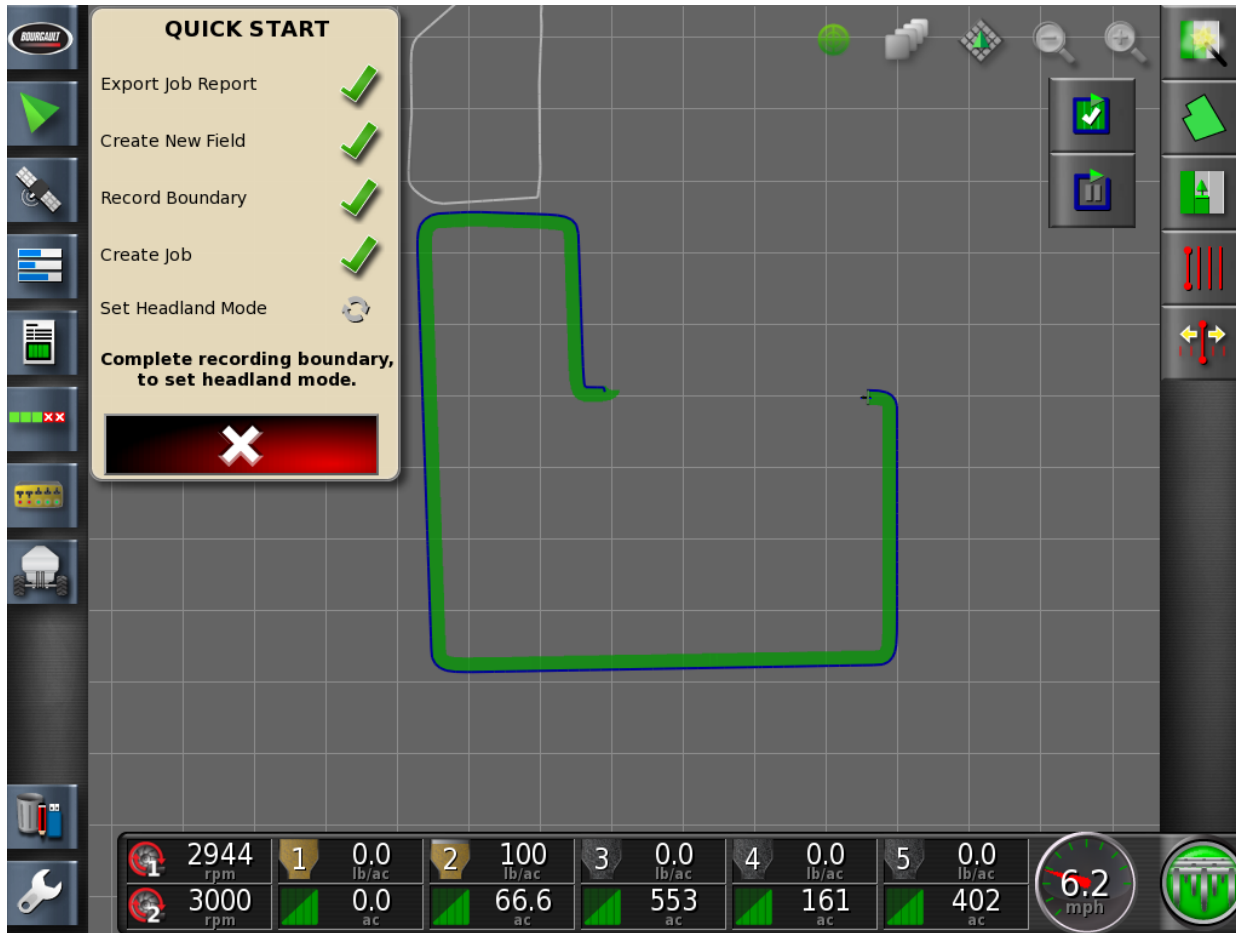
Set Headland Mode

Complete recording boundary, to set headland mode.

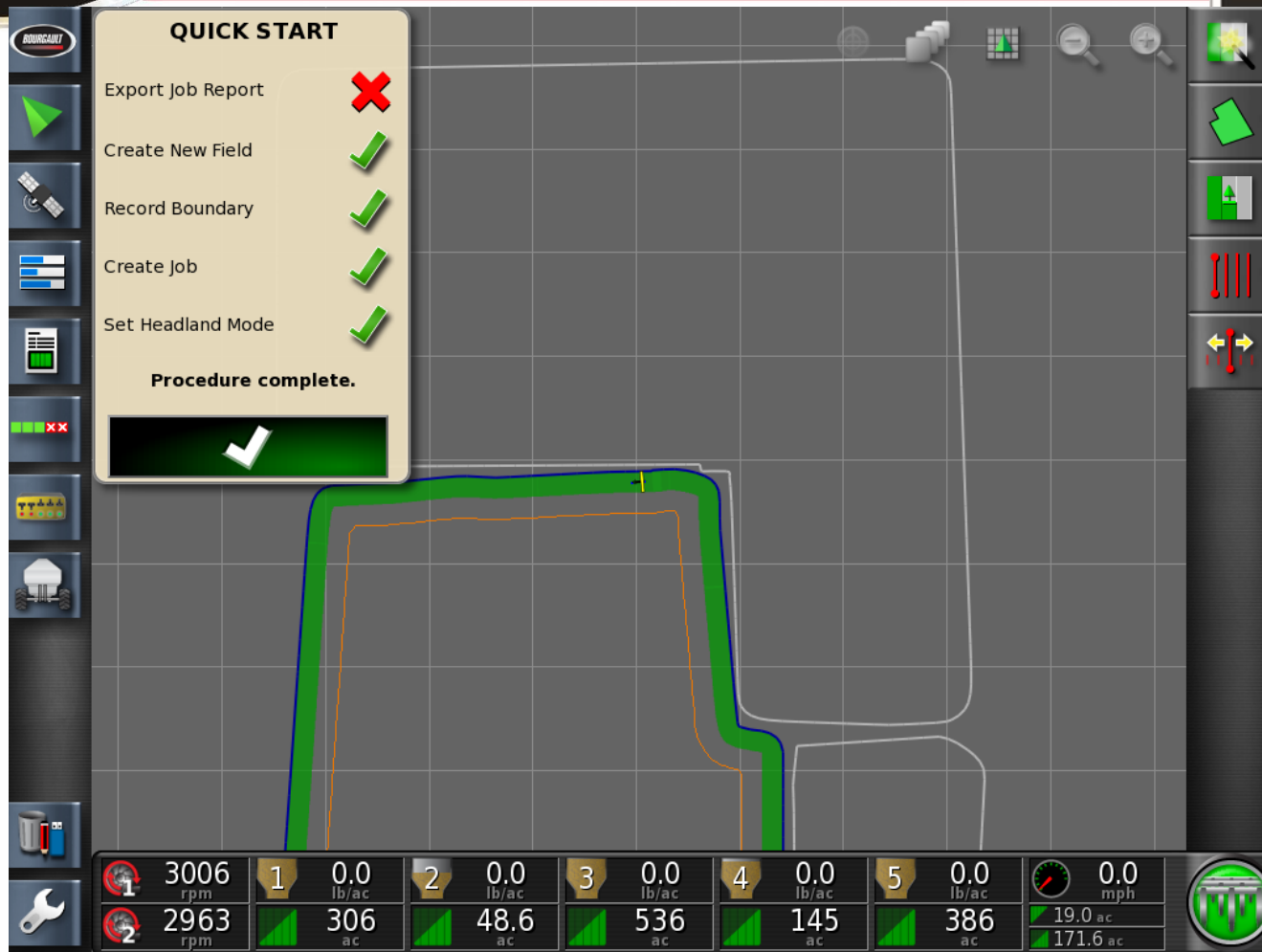
2985 rpm	0.0 lb/ac	0.0 lb/ac	0.0 lb/ac	0.0 lb/ac
2970 rpm	0.0 ac	77.4 ac	553 ac	161 ac

0.0 mph

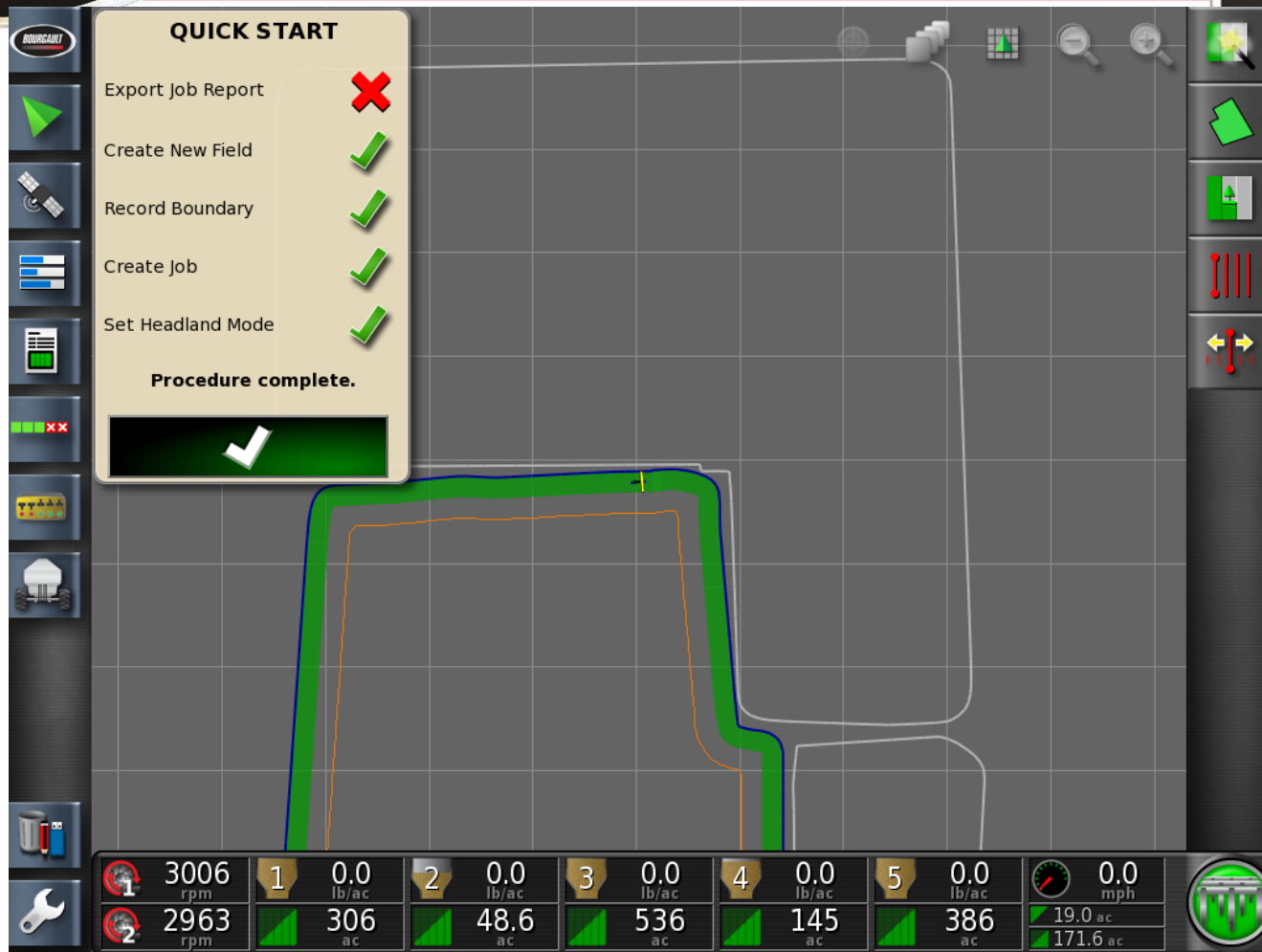
You are now ready to record your field Boundary.
See recording boundary power point.



Once your Boundary is complete press the green check or if you wish to pause the recording press the pause button.



Once your Boundary is complete the secondary Headland will appear as a yellow line within the field boundary.



Once all of the Quick Start steps are completed the Procedure complete appears. Note that there is a red X beside the Export Job Report, this shows that this was skipped by the operator.