



Greenstar II or III to Topcon X30 connections and settings.

(with a single point Connector on the Starfire 3000 receiver)

- the following pages show the connections and settings to allow the X30 to use the GPS signal from the **Greenstar II or III.**
- GPS signal is needed for Speed for Seeder, Variable Rate Control, Section Control and Guidance.



HOW TO INSTALL JOHN DEERE GPS RECEIVER HARNESS TO 3rd PARTY CONTROLLER FOR GPS SIGNAL ON SINGLE POINT STARFIRE CONNECTOR





•REQUIRED EQUIPMENT

**-Speed and GPS
harness PF80754**

**-Female/Female
Connector PFP10470**

**-Male/Male
Connector PF80722**

**-Serial null modem or
a gender changer**



**CONNECT THE
MALE/MALE PF80722
CONNECTOR INTO THE
FEMALE PLUG ON THE
ROOF OF THE
TRACTOR**



**Connect the female/female
PF10470 to the receiver cable
that was unhooked from the
tractor earlier.**



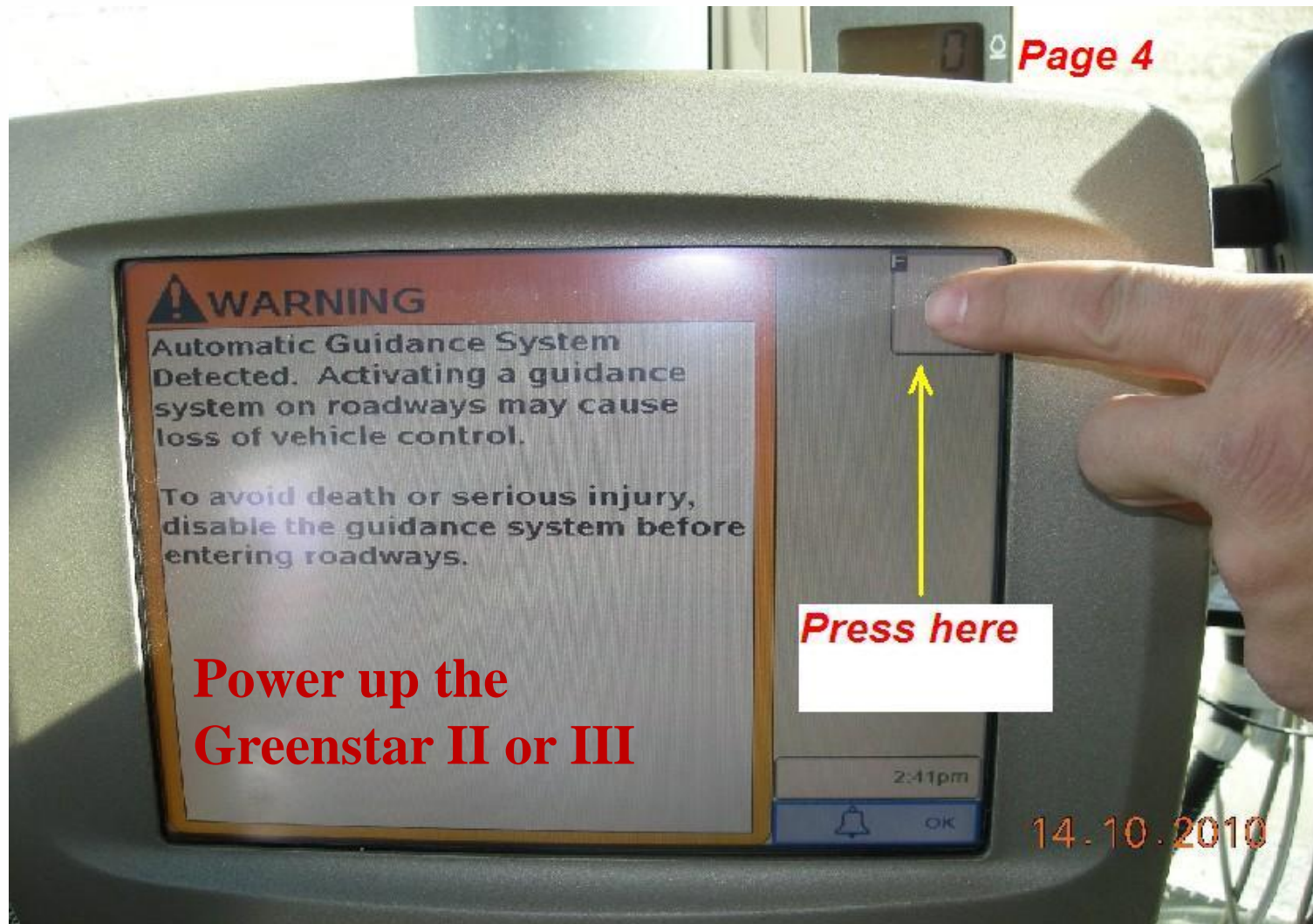
**Connect the PF10470 to the
Speed and GPS cable PF80754**



**Connect the PF80722 to the
Speed and GPS cable PF80754**



**FOLLOW THE STEPS ON
THE FOLLOWING PAGES
TO SETUP THE DISPLAY
BAUD RATE TO 38400
AND 10Hz ON BOTH THE
RECEIVER SETTINGS
AND THE X30 SETTINGS**



WARNING

Automatic Guidance System Detected. Activating a guidance system on roadways may cause loss of vehicle control.

To avoid death or serious injury, disable the guidance system before entering roadways.

**Power up the
Greenstar II or III**

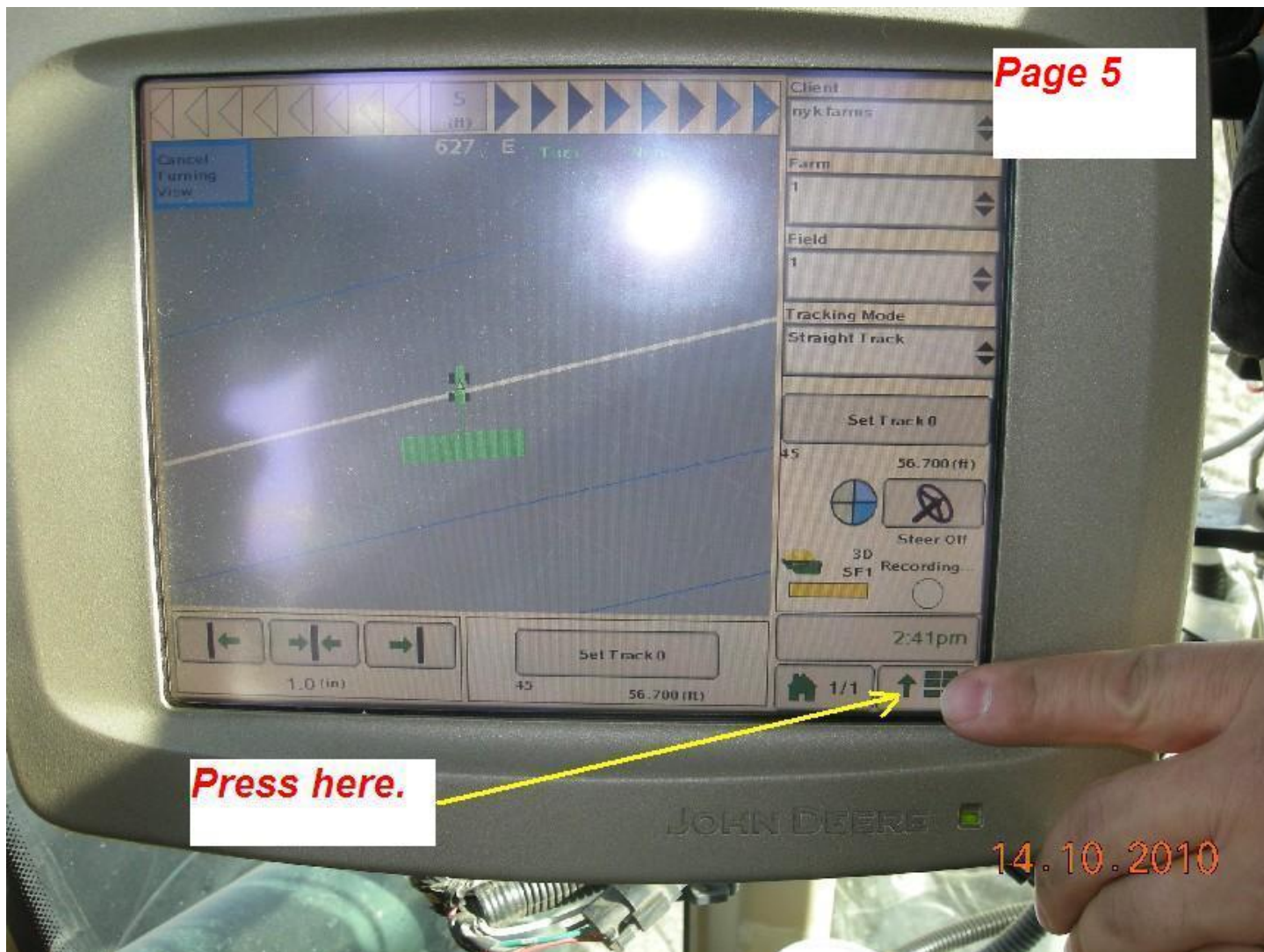
Press here

2:11pm



OK

14.10.2010

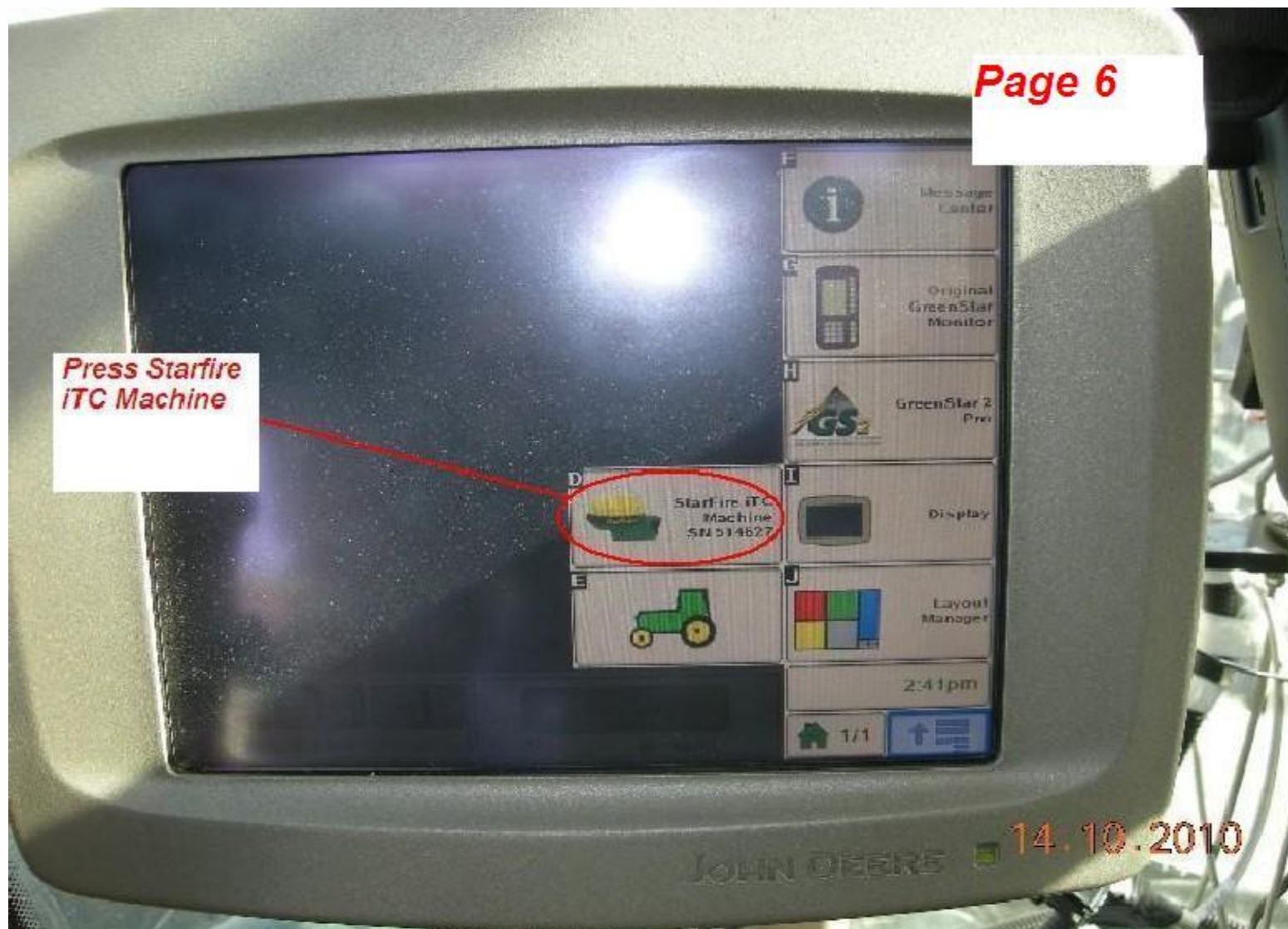


Page 5

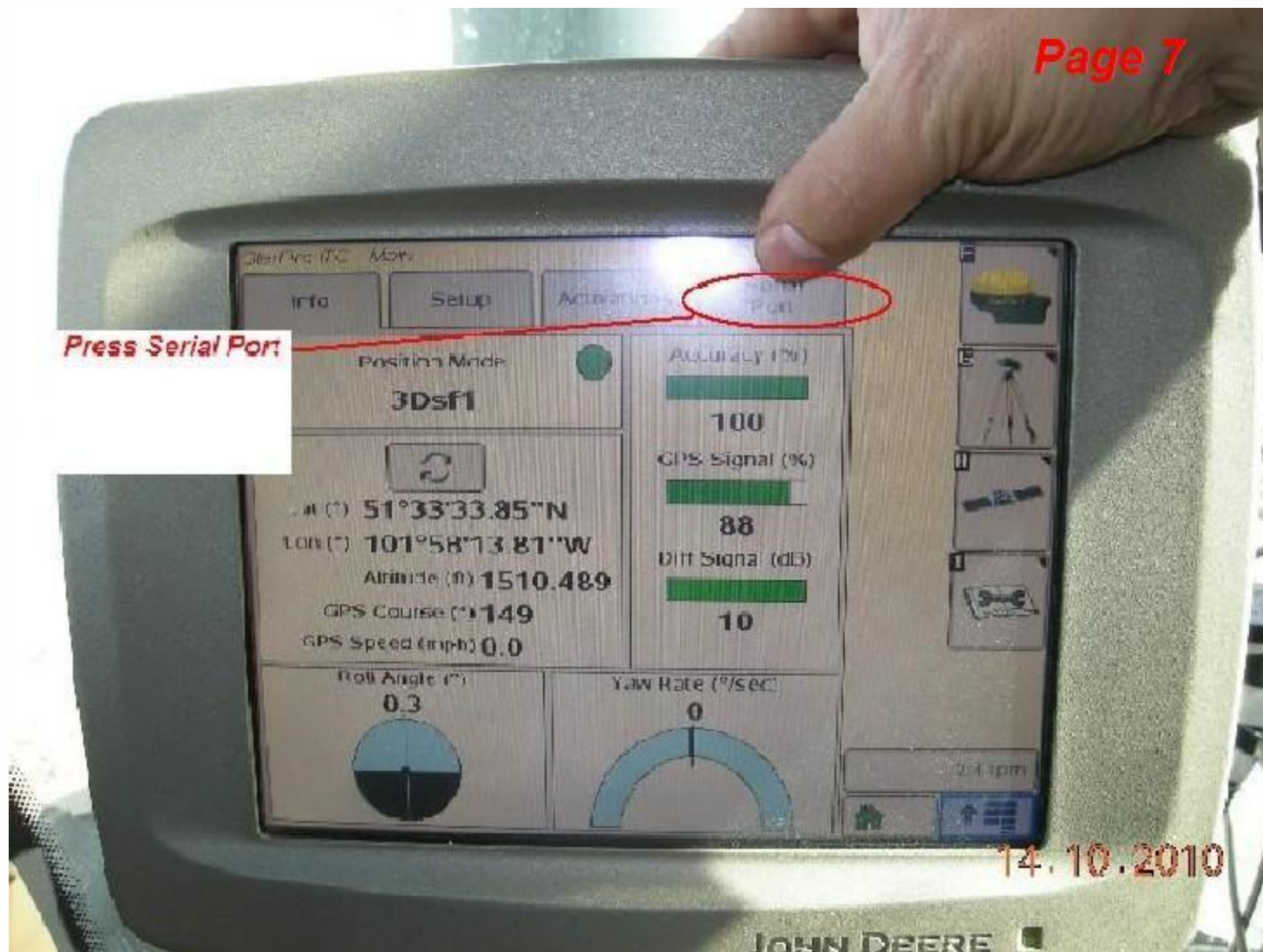
Press here.

14.10.2010

**Press Starfire
iTC Machine**



Press Serial Port





Page 8





The following will help you connect the Speed and GPS cable PF 80754 to the X30 main harness. There are two different ways to bring the signal into the X30 console.

You will need either a null modem or a gender changer depending which way the signal is brought in.





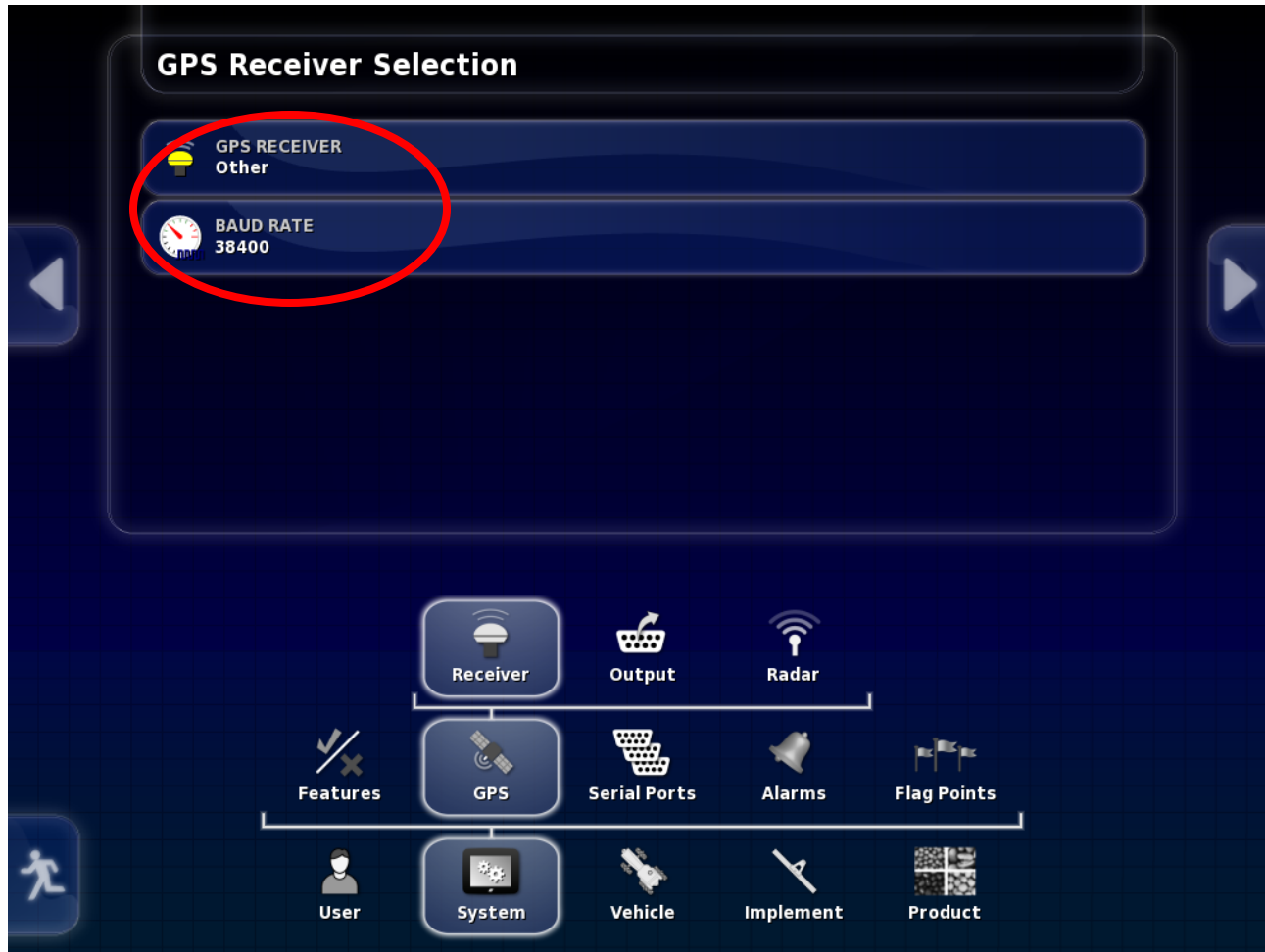
Com 2

You need the null modem. Supplied with the X30 monitor kit

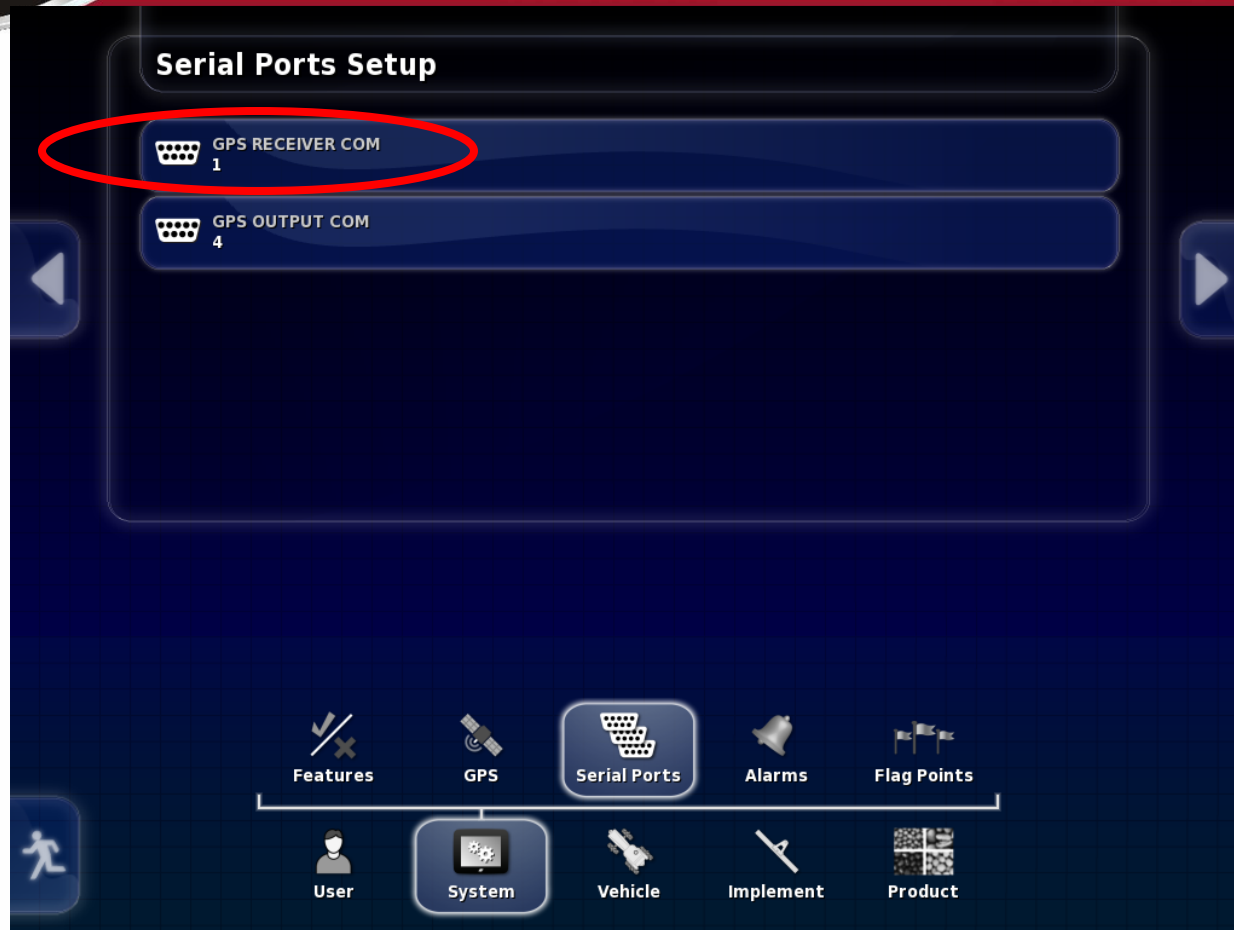


Com 1

You will need the mini gender changer that is supplied with the X30 monitor kit.

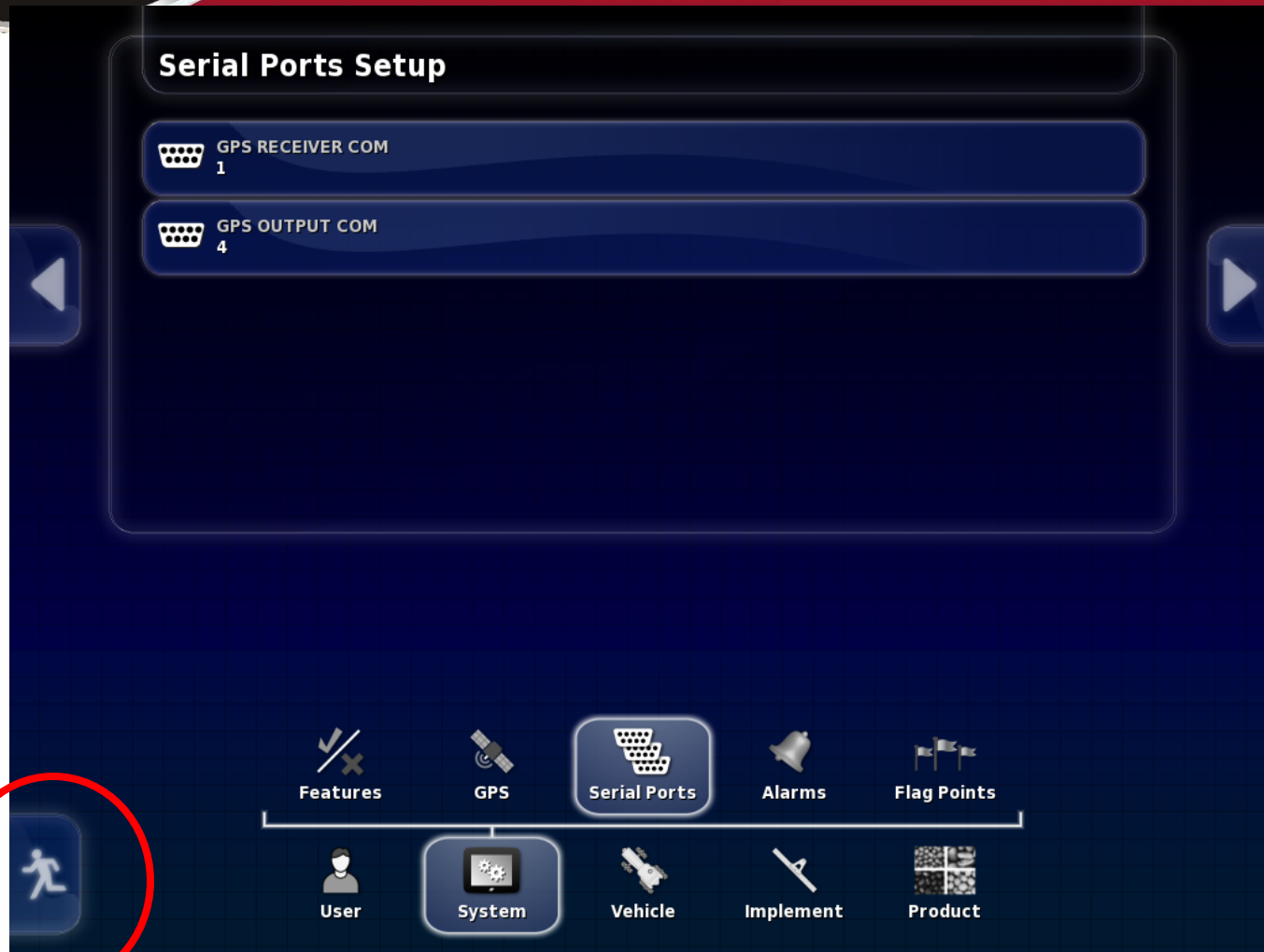


Set GPS RECEIVER to Other and BAUD RATE to match the Starfire 3000 output rate

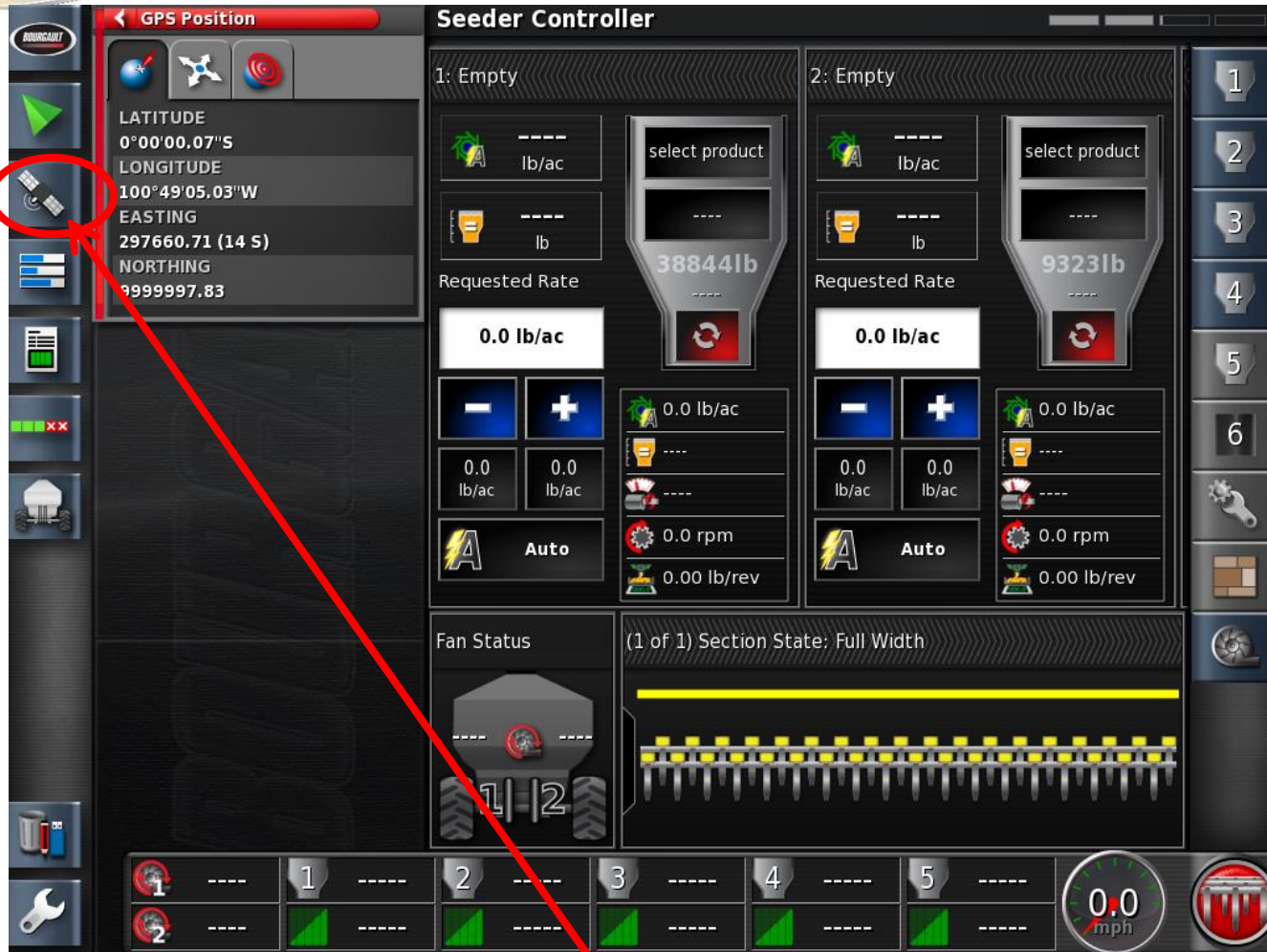


Set to match the way the signal is being brought in.

- Com 1 with the gender changer
- Com 2 with the null modem



Touch the Running man to go to the operating screen



Expand the GPS mini view



Verify position here