



Updating X30 Software

Bourgault Industries has supplied your dealership with a thumb drive loaded with the required files. Please use this thumb drive and skip to step 4.

The files may also be downloaded, listed below are the instructions how to download.

Please go to our download site at **download.bourgault.com**.

Enter code (**3.18.503**) – *the code is case sensitive and must be entered exactly*.

Press the submit code button

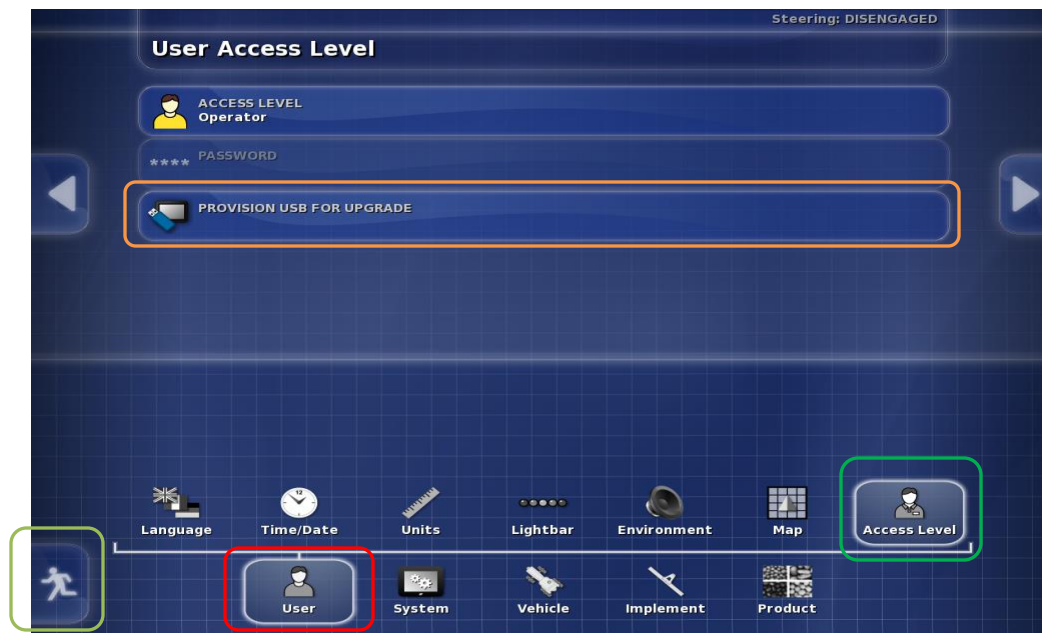
The screenshot shows a web browser window with the address bar displaying <http://download.bourgault.com/cgi-bin/upload/download.cgi>. The browser has multiple tabs open, including 'Webmail 6.0 - Inbox' and 'Bourgault File Download'. The main content area has a red header and a form titled 'Enter Download Code:'. The form contains a text input field with the value '3.18.503' and a 'Submit Code' button.

1. Download zip file attachment to a folder on your computer. File name will be 3.18.503.zip
2. Extract files from the zip and put onto an empty thumb drive.
3. There will be about 15 files on the thumb drive. Make sure these files are not in a file folder. Once an upgrade has been completed there will be additional files created as backups.



Name	Date modified	Type	Size
backup_1409359034.tar	8/30/2014 12:37 AM	GZ File	17 KB
bzImage-initramfs-x30	8/28/2014 6:12 AM	File	6,146 KB
install_mbr	3/26/2010 8:00 PM	Windows Comma...	1 KB
install_syslinux	3/23/2010 5:31 PM	Text Document	1 KB
mongoose_io_aux_fw.hex	8/29/2014 6:02 AM	HEX File	65 KB
mongoose_io_fw.hex	8/29/2014 6:02 AM	HEX File	193 KB
mongoose_slave_fw.hex	8/29/2014 6:02 AM	HEX File	288 KB
mongoose-ecu_aux_upgrade.tar	8/29/2014 6:02 AM	GZ File	177 KB
mongoose-ecu_upgrade.ipk	8/29/2014 6:02 AM	IPK File	1,894 KB
README	8/29/2014 6:02 AM	HTML Document	2 KB
rootfs.ext2	8/27/2014 6:16 AM	EXT2 File	49,152 KB
syslinux.cfg	3/24/2010 2:40 PM	CFG File	1 KB
syslinux	2/10/2011 4:09 PM	Application	28 KB
vesamenu.c32	2/16/2010 2:12 PM	C32 File	143 KB
x30-image-x30.tar	8/28/2014 6:12 AM	GZ File	154,709 KB
x30-rescue.sh	8/28/2014 6:12 AM	SH File	5 KB

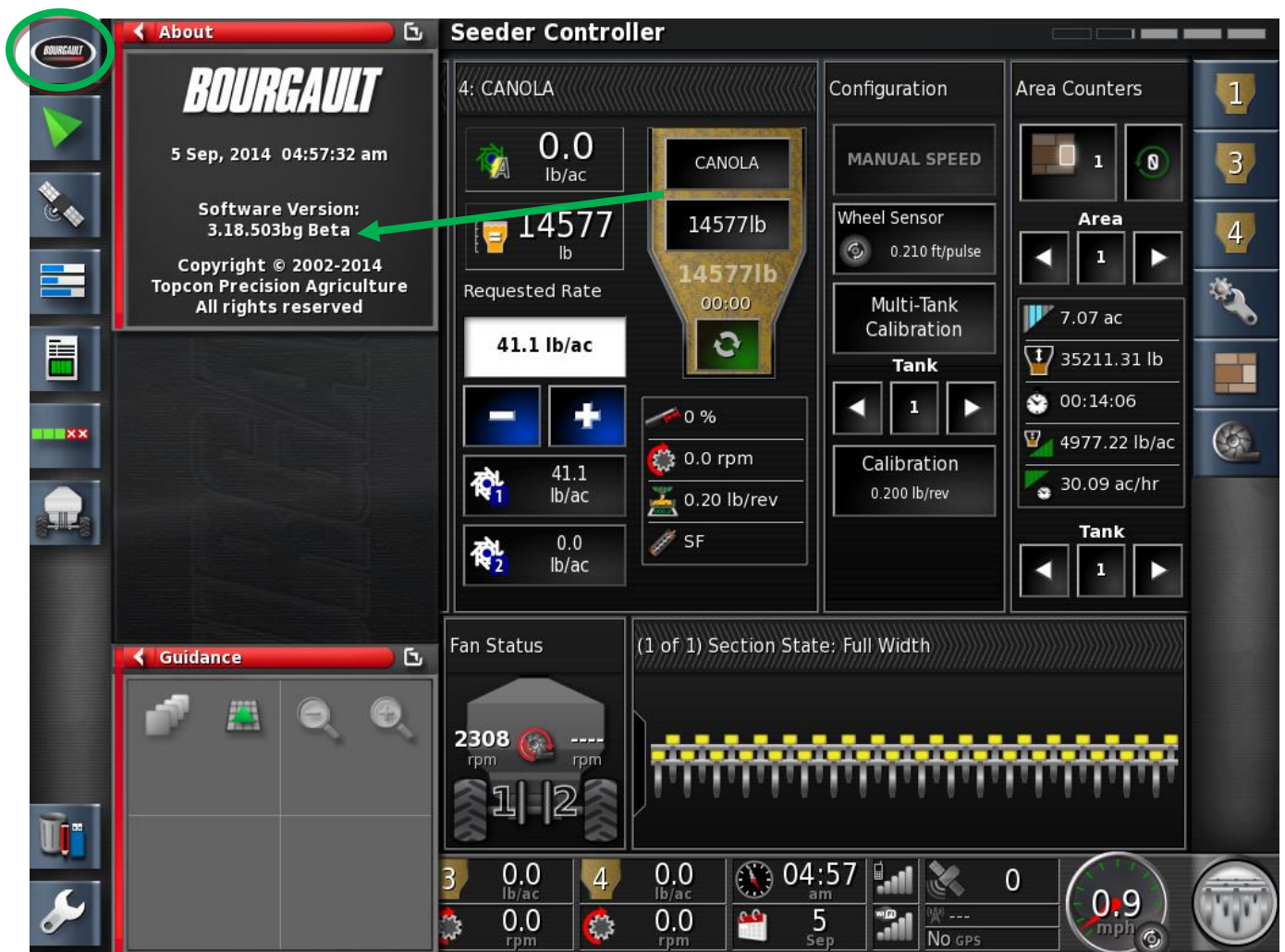
- Put thumb drive into X30 to provision it for upgrade. Go to settings page (wrench symbol bottom left corner of X30) Select “User”, “Access Level” touch “Provision USB for Upgrade” when confirm tab pops up select Yes.



- Remove thumb drive.
- Turn X30 off. Install thumb drive.
- Start up X30.



8. Wait until you get a notification at top of screen to remove thumb drive. Then remove the thumb drive.
9. System will reboot and ask you if you want to do a touchscreen calibration but not necessary. **Select No.**
10. System will ask if you want to retain user settings. **Always select yes.**



11. On main screen, click the Bourgaault button in the top left hand corner. Ensure that the software version shown there is **3.18.503bg Beta**
12. Upgrade complete.
13. Check your profile and timings to make sure they are set properly. **If using sectional control, section timing must be set.**

Updating ISO Bridge

1. Ensure X30 and ISO Bridge is switched off.



2. Put the thumb drive in the USB port on the Bridge. **Same one used for the X30 software update.**
3. Power up the X30. A **blue light** will flash on the IB-1.
4. When the **blue light** stops flashing remove the thumb drive. You will have 5-7 seconds to remove the thumb drive before the light starts to flash again. **(If the light starts flashing again before you removed the thumb drive, wait until the light stops flashing again)**
5. Power down the X30 and IB-1. Wait until the light on the IB-1 goes off.
6. Restart the X30.
7. On the main screen, click the Bourgaault button in the top left hand corner to bring up the **About** mini view. Touch on drag it to make this the main screen and scroll to the bottom of the page to check the firmware version of the IB-1 (ISO Bridge) **4.04-r3.**



Guidance

Seeder Controller

2307 rpm

1 2

System Information

GPS Receiver

Receiver Type: AGI-4
Firmware Version: n/a
Serial Number: n/a
ID: n/a

Steering Controller

Steering Controller Type: n/a
Firmware Version: n/a

Implement

ECU	Name	Type	Firmware Version
1	ISOBRIDGE	ISOBRIDGE	4.04-r3
2	MDECU1	MDECU	3.6.0,3.6.0

Wireless Network

MAC Address: N/A
SSID: N/A
IP Address: N/A

04:57 am
5 Sep
No GPS
0.9 mph

8. If monitor is hooked to the tank, the MDECU and SECU version will appear.
MDECU **3.6.0**
SECU **1.4.5**
 - The SECU is used when the tank is equipped with 5 tank metering or sectional control.
9. Update complete